

# CERTIFIED CORNER RECORDATION

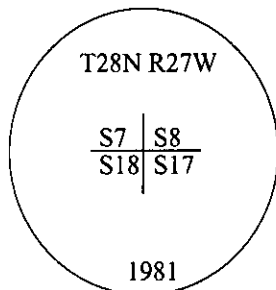
**Corner**    **Sec. Cor.**    **Secs.** 7,8,17,18    **T.** 28N    **R.** 27W    **P.M., MT**    **Lincoln**    **County**

I. 1891 G.L.O. Record by Newton Orr: A point about 400 ft. above last sec. cor., set a limestone, 12x10x5 ins., 8 ins. in the ground, for cor. to secs. 7,8,17 and 18, mkd. with 4 notches on S. and 5 notches on E. edges.

Established four bearing trees:

- A tamarack, 12 ins. diam., bears N10°E, 68 lks. dist., mkd "T28N R27W S8 BT".
- A tamarack, 15 ins. diam., bears S82°E, 20 lks. dist., mkd "T28N R27W S17 BT".
- A tamarack, 14 ins. diam., bears S82°W, 19 lks. dist., mkd "T28N R27W S18 BT".
- A tamarack, 12 ins. diam., bears N55°W, 64 lks. dist., mkd "T28N R27W S7 BT".

1981 B.L.M. Record by Joseph E. French: The cor. of secs. 7,8,17 and 18, monumented with a limestone, 12x10x8 ins., firmly set, 8 ins. in the ground, mkd. with 4 notches on the S. and 5 notches on the E. eds, and witnessed by the remains of the original bearing trees. At the corner point, set an aluminum post, 30 ins. long, 2 1/2 ins. diam., 24 ins. in the ground, with an aluminum cap, mkd. as shown.



Established one new bearing tree and bury the original stone alongside and raise a mound of stone, 3 1/2 ft. diam., around the aluminum post.

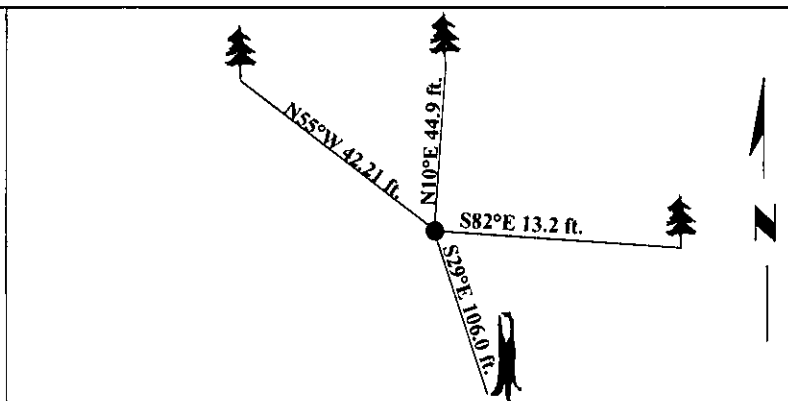
II. Found a 2 1/2 in. diam. aluminum pipe, firmly set, protruding 8 ins. above the ground, in a mound of stone, with a 3 1/4 in. diam. aluminum cap, mkd. as shown, and witnessed by three of the original bearing trees and the B.L.M. bearing tree.

from which:

- A larch, 18 ins. diam., bears N10°E, 44.9 ft. dist., with a healed face.
- A larch snag, 12 ins. diam., bears S29°E, 106.0 ft. dist., mkd. with an "X" "BT".
- A larch, 20 ins. diam., bears S82°E, 13.2 ft. dist., with visible scribe.
- A larch, 20 ins. diam., bears N55°W, 42.21 ft. dist., with a healed face.

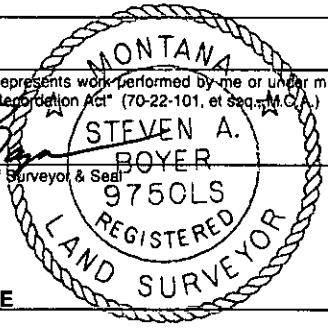
III. No trees available within reasonable dist. in sec. 18, due to logging.  
Painted bearing trees and attached Land Survey Monument and Bearing Tree signs.

Magnetic Declination: 20° East



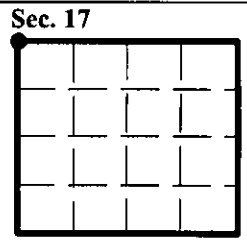
**SKETCH OF CORNER**

|                                      |  |
|--------------------------------------|--|
| CERTIFICATION                        |  |
| I. <u>Rex O. Rice</u>                | certify the information shown herein is true and correct.  |
| <i>Rex O. Rice</i>                   |  |
| I. <u>Steven A. Boyer</u>            | certify that this Corner Record correctly represents work performed by me or under my direction in compliance with the "Corner Recordation Act" (70-22-101, et seq., M.C.A.) |
| <i>Steven A. Boyer</i>               |  |
| Signature of Surveyor & Seal         |  |
| Date: <u>6/11/98</u>                 |  |
| Reg. No.: <u>9750LS</u>              |  |
| Employer: <u>U.S. FOREST SERVICE</u> |  |



Office of Clerk and Recorder, County of Lincoln. This "corner record" was filed for record on 10-6-98 and was noted on the cross-index plat and is assigned page No. 10225 in book No. \_\_\_\_\_.

*Coral M. Cummings*  
County Official



• - corner this sheet