

CERTIFIED CORNER RECORDATION

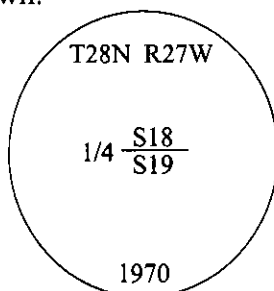
Corner 1/4 Secs. 18&19 T. 28N R. 27W P.M., MT Lincoln County

- I. 1891 G.L.O. Record by Newton Orr: Set a limestone, 12x10x5 ins., 8 ins. in the ground for the 1/4 sec. cor. of secs. 18 and 19, mkd. "1/4" on S. face.

Established two bearing trees:

A pine, 15 ins. diam., bears N25°E, 26 lks. dist., mkd "1/4 S BT".
A tamarack, 12 ins. diam., bears S25°W, 26 lks. dist., mkd "1/4 S BT".

1970 B.L.M. Record by Joseph E. French: The 1/4 sec. cor. of secs. 18 and 19, monumented with a limestone, 12x10x5 ins., firmly set, dimly mkd. "1/4" on the N. face, and witnessed by the remains of the original bearing trees. At the corner point, set an iron post, 30 ins. long, 2 1/2 ins. diam., 24 ins. in the ground, with brass cap mkd. as shown.



Established one new bearing tree and bury the original stone alongside the iron post.

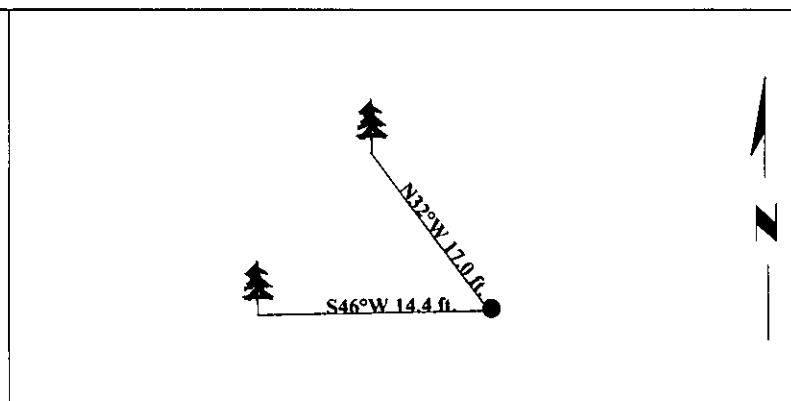
- II. Found a 2 1/2 in. diam. iron pipe, firmly set, protruding 2 ins. above the ground, with a collar of stone, 3 1/4 in. diam. brass cap, mkd. as shown, and witnessed by one of the original bearing trees and the B.L.M. bearing tree.

from which:

A fir, 11 ins. diam., bears S46°W, 14.4 ft. dist., with a healed face. (BLM-record-S49 1/2°W)
A larch, 22 ins. diam., bears N32°W, 17.0 ft. dist., with visible scribe. (GLO-record-pine-N25°E-26 lks.-17.16 ft.)

- III. Painted bearing trees and attached Land Survey Monument and Bearing Tree signs.

Magnetic Declination: 20° East

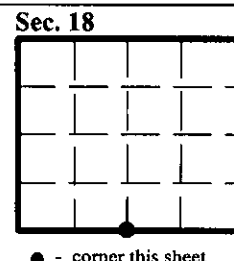


SKETCH OF CORNER

CERTIFICATION	
I. <u>Rex O. Rice</u>	certify the information shown herein is true and correct.
<u>Rex O. Rice</u>	
I. <u>Steven A. Boyer</u>	certify that this Corner Record correctly represents work performed by me or under my direction in compliance with the "Corner Recordation Act" (70-22-101, et seq., M.C.A.)
<u>Steven A. Boyer</u>	
Date: <u>6/11/98</u>	Signature of Surveyor & Seal
Reg. No.: <u>9750LS</u>	
Employer: <u>U.S. FOREST SERVICE</u>	

Office of Clerk and Recorder, County of Lincoln. This "corner record" was filed for record on 10-6-98 and was noted on the cross-index plat and is assigned page No. 10224 in book No. _____.

Coral M. Cummings By OLB
County Official



● - corner this sheet