

CERTIFIED CORNER RECORDATION

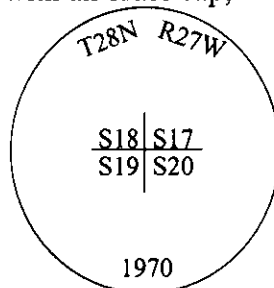
Corner Sec. Cor. Secs. 17,18,19,20 T. 28N R. 27W P.M., MT Lincoln County

- I. 1891 G.L.O. Record by Newton Orr: A point about 400 ft. above base of mountain, set a limestone, 15x12x6 ins., 10 ins. in the ground, for cor. to secs. 17,18,19 and 20, mkd. with 3 notches on S. and 5 notches on E. edges.

Established four bearing trees:

- A fir, 10 ins. diam., bears N68°E, 28 lks. dist., mkd "T28N R27W S17 BT".
- A fir, 8 ins. diam., bears S63°E, 33 lks. dist., mkd "T28N R27W S20 BT".
- A pine, 10 ins. diam., bears S85°W, 16 lks. dist., mkd "T28N R27W S19 BT".
- A fir, 7 ins. diam., bears N63°W, 8 lks. dist., mkd "T28N R27W S18 BT".

1970 B.L.M. Record by Joseph E. French: The cor. of secs. 17,18,19 and 20, monumented with a limestone, 15x12x6 ins., firmly set, mkd. with 3 notches on the S. and 5 notches on the E. edges, and witnessed by the remains of the original bearing trees. At the corner point, set an iron post, 30 ins. long, 2 1/2 ins. diam., 24 ins. in the ground, with an brass cap, mkd. as shown.



Established three new bearing trees and bury the original stone alongside the iron post.

- II. Found a 2 1/2 in. diam. iron pipe, firmly set, protruding 4 ins. above the ground, in a mound of stone, with a 3 1/4 in. diam. brass cap, mkd. as shown, and witnessed by two of the original bearing trees and two of the B.L.M. bearing trees.

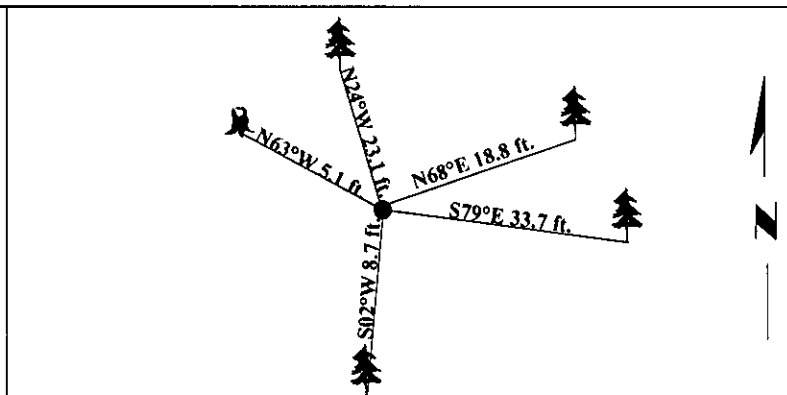
from which:

- A fir, 15 ins. diam., bears N68°E, 18.8 ft. dist., with visible scribe.
- A larch, 15 ins. diam., bears S79°E, 33.7 ft. dist., with visible scribe.
- A fir, 16 ins. diam., bears N24°W, 23.1 ft. dist., with visible scribe.
- A fir stump, 10 ins. diam., bears N63°W, 5.1 ft. dist., with visible scribe.

- III. Established one new bearing tree:
A fir, 6 ins. diam., bears S02°W, 8.7 ft. dist., mkd. "T28N R27W S19 BT".

Painted bearing trees and attached Land Survey Monument and Bearing Tree signs.

Magnetic Declination: 20° East



SKETCH OF CORNER

CERTIFICATION

I, Rex O. Rice
certify the Information shown herein is true and correct.

Rex O. Rice

I, Steven A. Boyer
certify that this Corner Record correctly represents work performed by me or under my direction in compliance with the "Corner Recordation Act" (20-22-101, et seq., M.C.A.).

Steven A. Boyer
Signature of Surveyor & Seal

Date: 6/11/98

Reg. No.: 9750LS

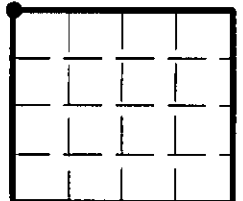
Employer: U.S. FOREST SERVICE

MONTANA
STEVEN A. BOYER
750LS
REGISTERED
LAND SURVEYOR

Office of Clerk and Recorder, County of Lincoln. This "corner record" was filed for record on 10-6-98 and was noted on the cross-index plat and is assigned page No. 10223 in book No. _____.

Carol M. Cunningham By ALB
County Official

Sec. 20



• - corner this sheet

Cross Index No. N-05 T. 28N R. 27W P.M., MT