

# CERTIFIED CORNER RECORDATION

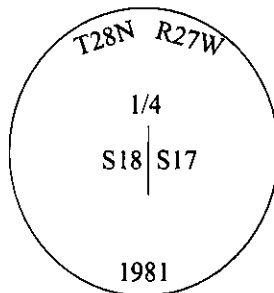
Corner 1/4 Secs. 17&18 T. 28N R. 27W P.M., MT Lincoln County

- I. 1891 G.L.O. Record by Newton Orr: Set a limestone, 24x12x4 ins., 18 ins. in the ground for the 1/4 sec. cor. of secs. 17 and 18, mkd. "1/4" on W. face.

Established two bearing trees:

A tamarack, 18 ins. diam., bears S89°W, 155 lks. dist., mkd "1/4 S BT".  
A tamarack, 18 ins. diam., bears N28°W, 147 lks. dist., mkd "1/4 S BT".

1981 B.L.M. Record by Joseph E. French: The 1/4 sec. cor. of secs. 17 and 18, monumented with a limestone, 24x12x4 ins., firmly set, 18 ins. in the ground, mkd. "1/4" on the W. face, and witnessed by the remains of the original bearing trees. At the corner point, set an aluminum post, 30 ins. long, 2 1/2 ins. diam., 24 ins. in the ground, with brass cap mkd. as shown.



Established one new bearing tree, and bury the original stone alongside and raise a mound of stone, 2 1/2 ft. diam., around the aluminum post.

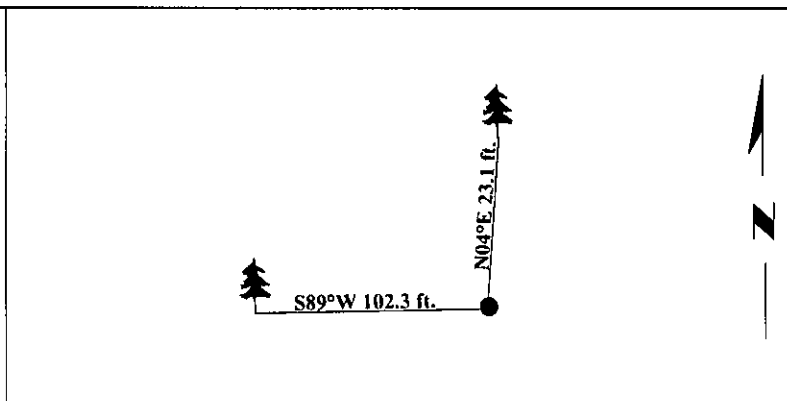
- II. Found a 2 1/2 in. diam. aluminum post, firmly set, protruding 6 ins. above the ground, with a 3 1/4 in. diam. brass cap, mkd. as shown, and witnessed by one of the original and the B.L.M. bearing trees.

from which:

A larch, 15 ins. diam., bears N04°E, 23.1 ft. dist., with a healed face.  
A larch, 32 ins. diam., bears S89°W, 102.3 ft. dist., with a healed face.

- III. Painted bearing trees and attached Land Survey Monument and Bearing Tree signs.

Magnetic Declination: 20° East

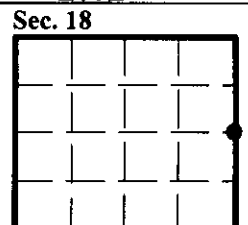


SKETCH OF CORNER

CERTIFICATION	
I. <u>Rex O. Rice</u>	certify the information shown herein is true and correct.
<i>Rex O. Rice</i>	
I. <u>Steven A. Boyer</u>	certify that this Corner Record correctly represents work performed by me or under my direction in compliance with the "Corner Recordation Act" (70-22-101, et seq., M.C.A.)
<i>Steven A. Boyer</i>	
Date: <u>6/11/98</u>	Signature of Surveyor & Seal
Reg. No.: <u>9750LS</u>	
Employer: <u>U.S. FOREST SERVICE</u>	

Office of Clerk and Recorder, County of Lincoln. This "corner record" was filed for record on 10-6-98 and was noted on the cross-index plat and is assigned page No. 10222 in book No. \_\_\_\_\_.

*Carol M. Cummings*  
County Official



• - corner this sheet