

# CERTIFIED CORNER RECORDATION

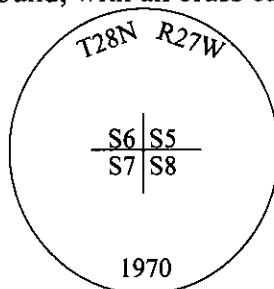
Corner Sec. Cor. Secs. 5,6,7,8 T. 28N R. 27W P.M., MT Lincoln County

- I. 1891 G.L.O. Record by Newton Orr: A point about 150 ft. below top of mountain, set a limestone, 15x12x5 ins., 10 ins. in the ground, for cor. to secs. 5,6,7 and 8, mkd. with 5 notches on S. and E. edges.

Established four bearing trees:

- A pine, 5 ins. diam., bears N85°E, 50 lks. dist., mkd "T28N R27W S5 BT".
- A tamarack, 14 ins. diam., bears S44°E, 116 lks. dist., mkd "T28N R27W S8 BT".
- A pine, 5 ins. diam., bears S57°W, 54 lks. dist., mkd "T28N R27W S7 BT".
- A pine, 5 ins. diam., bears N53°W, 4 lks. dist., mkd "T28N R27W S6 BT".

1970 B.L.M. Record by Joseph E. French: The cor. of secs. 5,6,7 and 8, monumented with a limestone, 15x12x5 ins., firmly set, 10 ins. in the ground, mkd. with 5 notches on the S. and E. edges, and witnessed by the remains of the original bearing trees. At the corner point, set an iron post, 30 ins. long, 2 1/2 ins. diam., 24 ins. in the ground, with a brass cap, mkd. as shown.



Established four new bearing trees and bury the original stone alongside the iron post.

- II. Found a 2 1/2 in. diam. iron pipe, firmly set, protruding 4 ins. above the ground, with a 3 1/4 in. diam. brass cap, mkd. as shown, and witnessed by one original bearing tree and the B.L.M. bearing trees.

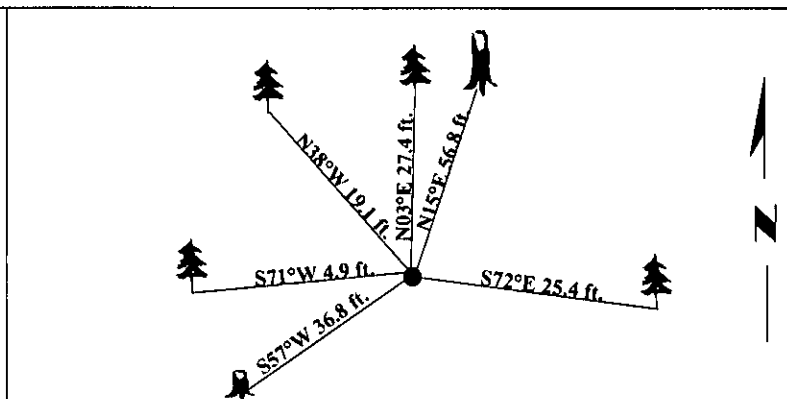
from which:

- A broken spruce snag, 13 ins. diam., bears N15°E, 56.8 ft. dist., with visible scribe. (BLM-rec.)
- A larch, 15 ins. diam., bears S72°E, 25.4 ft. dist., with a healed face. (BLM-record)
- A pine stump, 13 ins. diam., bears S57°W, 36.8 ft. dist., with visible scribe. (GLO-record)
- A spruce, 17 ins. diam., bears S71°W, 4.9 ft. dist., with visible scribe. (BLM-record)
- A larch, 11 ins. diam., bears N38°W, 19.1 ft. dist., with a healed face. (BLM-record)

- III. Established one new bearing tree:  
A pine, 14 ins. diam., bears N03°W, 27.4 ft. dist., mkd. "T28N R27W S5 BT".

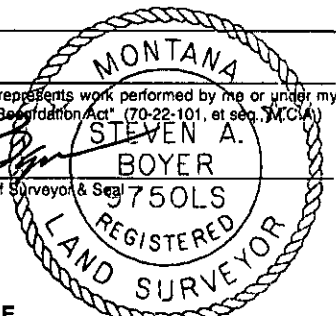
Painted bearing trees and attached Land Survey Monument and Bearing Tree signs.

Magnetic Declination: 20° East



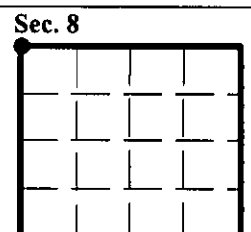
SKETCH OF CORNER

CERTIFICATION	
I. <u>Rex O. Rice</u>	certify the information shown herein is true and correct.
<u>Rex O. Rice</u>	
I. <u>Steven A. Boyer</u>	certify that this Corner Record correctly represents work performed by me or under my direction in compliance with the "Corner Recordation Act" (70-22-101, et seq., M.C.A.)
<u>Steven A. Boyer</u>	
Signature of Surveyor & Seal	
Date: <u>6/15/98</u>	
Reg. No.: <u>9750LS</u>	
Employer: <u>U.S. FOREST SERVICE</u>	



Office of Clerk and Recorder, County of Lincoln. This "corner record" was filed for record on 10-6-98 and was noted on the index plat and is assigned page No. 10221 in book No.                     .

Coral M. Cummings By DEB  
County Official



● - corner this sheet