

INSTRUCTIONS

1. Original and/or subsequent record used to evaluate the corner position.
2. Description of evidence found, note discrepancies in the record, state method of establishing lost or obliterated corners.
3. Description of monument and accessories set to perpetuate the corner position.
4. Sketch of corner, show all pertinent data which can best be shown in a sketch example, corner marking, topography ties, position of accessories, etc.
5. Certification must be signed and sealed by Land Surveyor registered in the State of Montana.
6. Fill in Cross Index & Section Diagram at bottom of sheet.

CERTIFIED CORNER RECORDATION

Corner of Secs. 23, 24, 25, & 26 T. 28 N., R. 27 1/2 W., Lincoln County

I. 1902 G.L.O. record by B. S. Adams and W. E. Weeks: Set a stone monument and marked four bearing trees.

1970 B.L.M. remonumentation record by J. E. French: The cor. of secs. 23, 24, 25 and 26, monumented with a limestone, 15 x 10 x 4 ins., firmly set, mkd. 2 notches on the S. and 1 notch on the E. edges, and witnessed by the original bearing trees:

- A larch, 20 ins. diam., bears N73° E, 75 lks. dist., marked T28N R27 1/2W S24 BT.
A matured larch, 24 ins. diam., bears S67° E, 87 lks. dist., marked T28N R27 1/2W S25 BT.
A fir, 12 ins. diam., bears S46 1/2° W, 41 lks. dist., marked T28N R27 1/2W S26 BT.
A larch, 16 ins. diam., bears N57 1/4° W, 87 lks. dist., marked T28N R27 1/2W S23 BT.

At the corner point; Set an iron post, 30 ins. long, 2 1/2 ins. diam., 24 ins. in the ground, with brass cap mkd.

T28N R27 1/2W
S23 | S24
S26 | S25
1970

from which a new bearing tree:

A pine, 8 ins. diam., bears S75 3/4° E, 30 lks. dist., mkd. T28N R27 1/2W S25 BT.

Bury the original stone alongside the iron post.

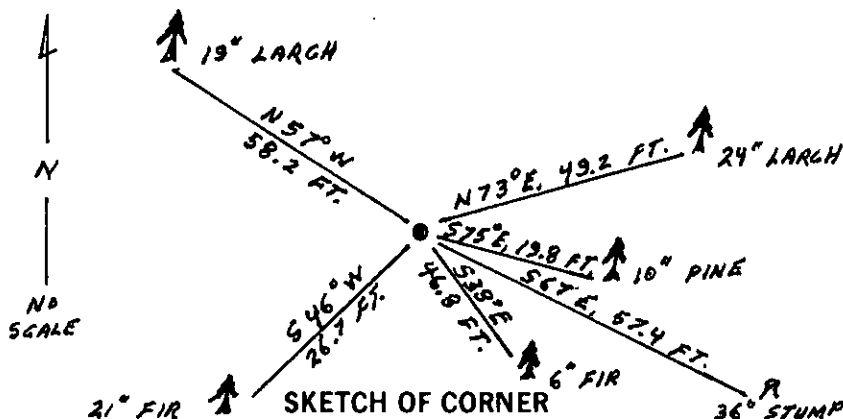
II. Found a B.L.M. iron pipe, 2 1/2 ins. diam., 9 ins. above ground, with 3 1/4 ins. diam. brass cap marked as shown above; from which

- A larch, 24 ins. diam., bears N73° E, 49.2 ft. (75 lks.) dist., mkd. 8 7 1/2. (G.L.O.)
A larch stump, 36 ins. diam., bears S67° E, 57.4 ft. (87 lks.) dist., mkd. 7 1/2 on log alongside. (G.L.O. record)
A fir, 21 ins. diam., bears S46° W, 26.7 ft. (40 lks.) dist., mkd. T28 7 6. (G.L.O.)
A larch, 19 ins. diam., bears N57° W, 58.2 ft. (88 lks.) dist., visible scribe marks. (G.L.O.)
A pine, 10 ins. diam., bears S75° E, 19.8 ft. (30 lks.) dist., mkd. T28N R27 1/2W S25 BT. (B.L.M.)

III. Established one new bearing tree:

A fir, 6 ins. diam., bears S38° E, 46.8 ft. dist., mkd. T28N R27 1/2W S25 BT.

Painted red bands around the bearing trees and attached Land Survey Monument and Bearing Tree signs.
Set a 6 ft. galvanized steel guard post with Land Survey Marker and Property Boundary decals, South, 3 ft.
Magnetic Declination: 20° East



CERTIFICATION

I, Thomas A. Hommel,
certify the information shown herein is true and correct.

Signature Ground Party Chief: _____

I, Ronald A. Pearson,
certify that this Corner Record correctly represents work performed by me or under my direction in compliance with the "Corner Recordation Act" (70-22-101, et seq., M.C.A.)

Signature of Surveyor & Seal: Ronald A. Pearson

Date: 7/22/92 Reg. No. 9008 LS

Employer: U.S. FOREST SERVICE

Office of Clerk and Recorder, County of Lincoln. This "corner record" was filed for record on 8-13-92 was noted on the cross-index plat and is assigned page No. 5092, in book No. _____

R-21 28 N 27 1/2 W
Cross Index No. _____ T. _____ R. _____ PMM

