

INSTRUCTIONS

1. Original and/or subsequent record used to evaluate the corner position.
2. Description of evidence found, note discrepancies in the record, state method of establishing lost or obliterated corners.
3. Description of monument and accessories set to perpetuate the corner position.
4. Sketch of corner, show all pertinent data which can best be shown in a sketch example, corner marking, topography ties, position of accessories, etc.
5. Certification must be signed and sealed by Land Surveyor registered in the State of Montana.
6. Fill in Cross Index & Section Diagram at bottom of sheet.

CERTIFIED CORNER RECORDATION

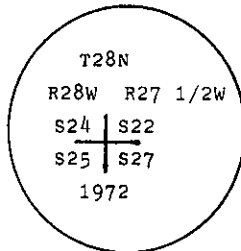
Corner of Secs. 22, 24, 25 & 27 T. 28 N., R. 27 1/2 W., Lincoln County

I. 1902 G.L.O. record by B. S. Adams and W. E. Weeks: Set a wood monument and raise mound of stone.

1972 B.L.M. remonumentation record by J. E. French: "The cor. of secs. 22, 24, 25 and 27. on the W. bdy. of the Tp., monumented with a pine post, 3 ft. long, 4 ins. sq., 24 ins. in the ground. mkd. T28N S22 on the NE., R27 1/2W S27 on the SE., S25 on the SW., and R28W S24 on the NW. face, 2 notches on the S. and 4 notches on the N. edges, from which a bearing tree of unknown origin:

A larch, 42 ins. diam., bears S32 1/2° W, 345 lks. dist., with illegible scribing visible.

At the corner point: set an iron post, 30 ins. long, 2 1/2 ins. diam., 20 ins. in the ground, with brass cap mkd.



from which new bearing trees:

A larch, 20 ins. diam., bears N23 1/4° E, 246 lks. dist., mkd. T28N R27 1/2W S22 BT.

Bury the original post alongside the iron post."

II. Found a 2 1/2 ins. diam. iron pipe, 6 ins. above ground with B.L.M. 3 1/4 ins. diam. brass cap marked as shown above; from which

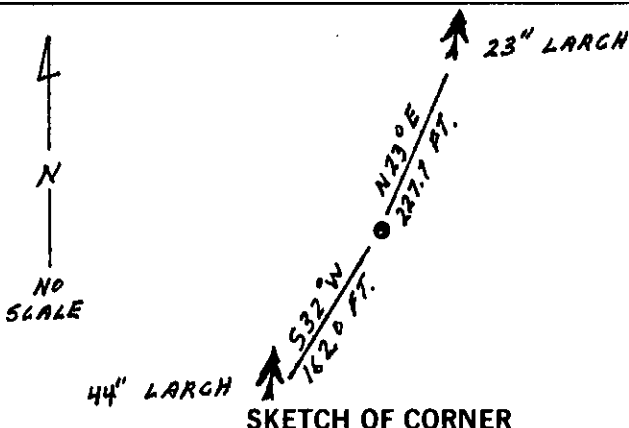
A larch, 44 ins. diam., bears S32° W, 162.0 ft. (246 lks.) dist., healed scribe face. (B.L.M. record: S32 1/2° W, 345 lks.)

A larch, 23 ins. diam., bears N23° E, 227.7 ft. (345 lks.) dist., mkd. T28N R27 1/2W S22 BT. (B.L.M. record: N23 1/4° E, 246 lks.)

III. Painted red bands around the bearing trees and attached Land Survey Monument and Bearing Tree signs.

Set a 6 ft. galvanized steel guard post with Land Survey Marker and Property Boundary decals, East, 3 ft.

Magnetic Declination: 20° East



SKETCH OF CORNER

CERTIFICATION

I. Thomas A. Hommel
certify the information shown herein is true and correct.

Signature Ground Party Chief

I. Ronald A. Pearson
certify that this Corner Record correctly represents work performed by me or under my direction in compliance with the "Corner Recordation Act" (70-22-101, et seq., M.C.A.)

Signature of Surveyor & Seal

Date: 7/22/92 Reg. No. 9008 LS

Employer: U.S. FOREST SERVICE

Office of Clerk and Recorder, County of Lincoln. This "corner record" was filed for record on 8-13-92 was noted on the cross-index plat and is assigned page No. 5091, in book No. Coral M. Pearson

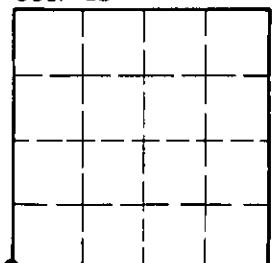
County Official

R-13

28 N 27 1/2 W

Cross Index No. T. R. PMM

Sec. 22



• - corner this sheet