

INSTRUCTIONS

1. Original and/or subsequent record used to evaluate the corner position.
2. Description of evidence found, note discrepancies in the record, state method of establishing lost or obliterated corners.
3. Description of monument and accessories set to perpetuate the corner position.
4. Sketch of corner, show all pertinent data which can best be shown in a sketch example, corner marking, topography ties, position of accessories, etc.
5. Certification must be signed and sealed by Land Surveyor registered in the State of Montana.
6. Fill in Cross Index & Section Diagram at bottom of sheet.

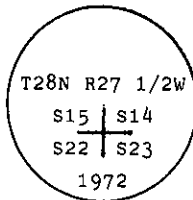
CERTIFIED CORNER RECORDATION

Corner of Secs. 14, 15, 22 & 23 T. 28 N., R. 27 1/2 W., P.M.M. Lincoln County

I. 1902 G.L.O. record by B. S. Adams and W. E. Weeks: Set a stone monument and marked four bearing trees.

1972 B.L.M. remonumentation record by J. E. French: "The cor. of secs. 14, 15, 22 and 23, monumented with a limestone, 15x12x8 ins., set 10 ins. in the ground, mkd. 3 notches on the S. and 2 notches on E. edges, from which the remains of three of the original bearing trees:
A larch, 13 ins. diam., bears N25° E, 146 lks. dist., mkd. T28N R27 1/2W S14 BT.
(Record: Alder, N34° E, 21 lks.)
A larch, 18 ins. diam., bears S71° E, 97 lks. dist., marked T28N R27 1/2W S23 BT
(record: S12° E, 36 lks.)
A larch snag, 14 ins. diam., bears N87° W, 39 lks. dist., marked T28N R27 1/2W S22 BT.
(Record: N28° W, 29 lks.)

At the corner point; set an iron post, 30 ins. long, 2 1/2 ins. diam., 24 ins. in the ground, with brass cap mkd.



from which new bearing trees:

A fir, 9 ins. diam., bears S62° W, 65 lks. dist., mkd. T28N R27 1/2W S22 BT.
A pine, 12 ins. diam., bears N35° W, 111 lks. dist., mkd. T28N R27 1/2W S15 BT.

Bury the original stone alongside the iron post."

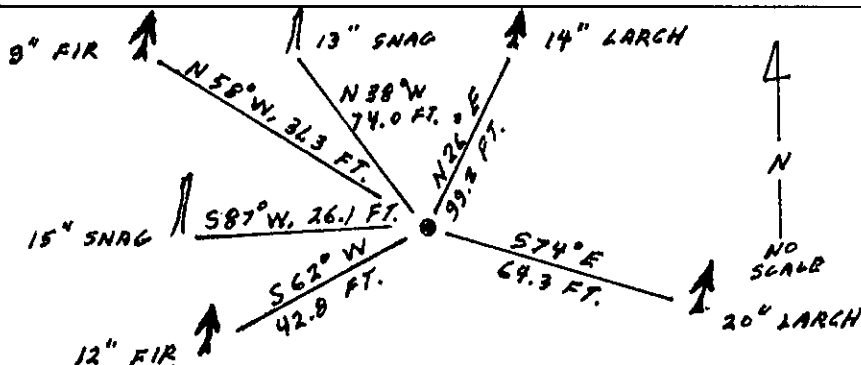
II. Found a 2 1/2 ins. diam. iron pipe, 6 ins. above ground with rock collar, B.L.M. 3 1/4 ins. diam. brass cap marked as shown above: from which

A larch, 14 ins. diam., bears N26° E, 99.2 ft. (150 lks.) dist., mkd. 4. (G.L.O.)
A larch, 20 ins. diam., bears S74° E, 64.3 ft. (97 lks.) dist., mkd. 8N 27 1/2 S23. (G.L.O.)
A fir, 12 ins. diam., bears S62° W, 42.8 ft. (65 lks.) dist., visible scribe. (B.L.M.)
A larch snag, 15 ins. diam., bears S87° W, 26.1 ft. (40 lks.) dist., mkd. 28N 27 1/2W S22 BT.
(B.L.M. record: N87° W, 39 lks., G.L.O. record: N28° W, 29 lks.)
A pine snag, 13 ins. diam., bears N38° W, 74.0 ft. (112 lks.) dist., mkd. T28N R27 1/2W S15 BT.
(B.L.M.)

III. Established one new bearing trees:

A fir, 9 ins. diam., bears N58° W, 31.3 ft. dist., mkd. T28N R27 1/2W S15 BT.

Painted red bands around the bearing trees and attached Land Survey Monument and Bearing Tree signs.
Set a 6 ft. galvanized steel guard post with Land Survey Marker and Property Boundary decals, East of Corner.
Magnetic Declination: 20° East



SKETCH OF CORNER

CERTIFICATION	
1. Thomas A. Hommel	
certify the information shown herein is true and correct.	
Signature Ground Party Chief	
1. Ronald A. Pearson	
certify that this Corner Record correctly represents work performed by me or under my direction in compliance with the "Corner Recordation Act" (70-22-101, et seq., M.C.A.)	
Signature of Surveyor & Seal	
Date: 7/22/92	Reg. No. 9008 LS
Employer: U.S. FOREST SERVICE	

Office of Clerk and Recorder, County of Lincoln. This "corner record" was filed for record on 8-13-92 was noted on the cross-index plat and is assigned page No. 5089, in book No.

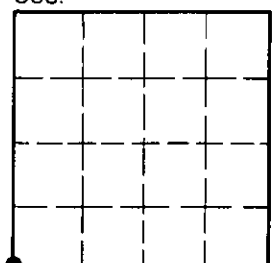
County Official

N-17

28 N 27 1/2 W

Cross Index No. T. R. PMM

Sec. 14



• - corner this sheet