

**INSTRUCTIONS**

1. Original and/or subsequent record used to evaluate the corner position.
2. Description of evidence found, note discrepancies in the record, state method of establishing lost or obliterated corners.
3. Description of monument and accessories set to perpetuate the corner position.
4. Sketch of corner, show all pertinent data which can best be shown in a sketch example, corner marking, topography ties, position of accessories, etc.
5. Certification must be signed and sealed by Land Surveyor registered in the State of Montana.
6. Fill in Cross Index & Section Diagram at bottom of sheet.

**CERTIFIED CORNER RECORDATION**

Corner 1/4 of Secs. 26 & 27 T. 28 N. R. 27 1/2 W. P.M.M. Lincoln County

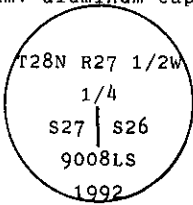
I. 1902 G.L.O. record by B. S. Adams and W. B. Weeks: "Set a limestone, 20x12x6 ins., 15 ins. in the ground, for 1/4 sec. cor., marked 1/4 on W face; from which

- A fir, 15 ins. diam., bears N56° E, 6 lks. dist., marked 1/4 S26 BT.
- A fir, 14 ins. diam., bears S50° W, 36 lks. dist., marked 1/4 S27 BT."

II. Found a loosely set stone, 8x4 ins., 9 ins. above ground, marked 1/4 on the west face; from which

- A fir snag, 17 ins. diam., bears N56° E, 3.9 ft. (6 lks.) dist., healed face.
- A larch, 24 ins. diam., bears N67° W, 41.3 ft. (63 lks.) dist., healed face (no record).
- Searched for evidence of fir, bearing S50° W, 36 lks. dist., no evidence.

III. In place of stone monument; set an aluminum pipe, 2 1/2 ins. diam., 30 ins. long, 12 ins. in the ground to bedrock with 3 1/4 ins. diam. aluminum cap marked as shown:



from which (marked two new bearing trees):

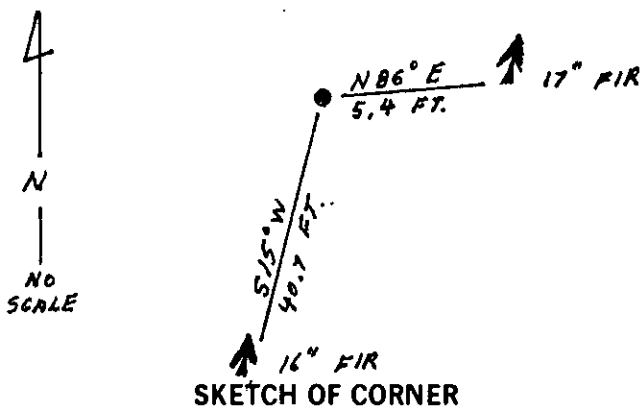
- A fir, 17 ins. diam., bears N86° E, 5.4 ft. dist., marked 1/4 S26 BT.
- A fir, 16 ins. diam., bears S15° W, 40.7 ft. dist., marked 1/4 S27 BT.

Painted red bands around the bearing trees and attached Land Survey Monument and Bearing Tree signs.

Raise a support collar of stone and bury original stone alongside new aluminum monument.

Set a 6 ft. galvanized steel guard post with Land Survey Marker and Property Boundary decals, North, 4.8 ft.

Magnetic Declination: 20° East



**CERTIFICATION**

I, Thomas A. Hommel  
certify the information shown herein is true and correct.

Signature Ground Party Chief

I, Ronald A. Pearson  
certify that this Corner Record correctly represents work performed by me or under my direction in compliance with the "Corner Recordation Act" (70-22-101, et seq., M.C.A.)

*Ronald A. Pearson*  
Signature of Surveyor & Seal

Date: 7/22/92 Reg. No. 9008 LS

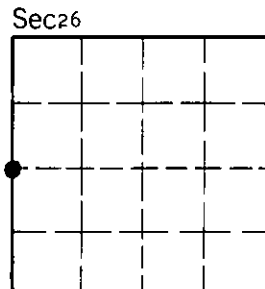
Employer: U.S. FOREST SERVICE

Office of Clerk and Recorder, County of Lincoln. This "corner record" was filed for record on 8-13-92 was noted on the cross-index plat and is assigned page No. 5087, in book No. Coral M. Cross Index

County Official

T-17 28 N 27 1/2 W

Cross Index No. \_\_\_\_\_ T. \_\_\_\_\_ R. \_\_\_\_\_ PMM



• - corner this sheet