

INSTRUCTIONS

1. Original and/or subsequent record used to evaluate the corner position.
2. Description of evidence found, note discrepancies in the record, state method of establishing lost or obliterated corners.
3. Description of monument and accessories set to perpetuate the corner position.
4. Sketch of corner, show all pertinent data which can best be shown in a sketch example, corner marking, topography ties, position of accessories, etc.
5. Certification must be signed and sealed by Land Surveyor registered in the State of Montana.
6. Fill in Cross Index & Section Diagram at bottom of sheet.

CERTIFIED CORNER RECORDATION

Corner 1/4 of Secs. 22 & 27 T. 28 N. R. 27 1/2 W. P.M.M. Lincoln County

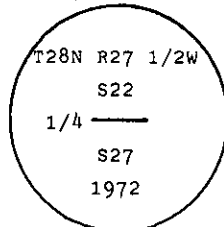
I. 1902 G.L.O. record by B. S. Adams and W. B. Weeks: Set a wood post and two bearing trees.

1972 B.L.M. remonumentation record by J. E. French: "The 1/4 cor. of secs. 22 and 27, as determined from the original bearing trees:

- A matured larch, 43 ins. diam., bears S9°W, 25 lks. dist., mkd. 1/4 S27 BT.
A pine, 12 ins. diam., bears N60°W, 38 lks. dist., mkd. 1/4 S22 BT.

At the corner point

Set an iron post, 30 ins. long, 2 1/2 ins. diam., 24 ins. in the ground, with brass cap mkd.



from which a new bearing tree:

- A pine, 7 ins. diam., bears S40°E, 24 lks. dist., mkd. 1/4 S27 BT.

II. Found a 2 1/2 ins. diam. iron pipe, 5 ins. out of the ground, with brass cap mkd. as shown; from which:

- A pine snag, 7 ins. diam., bears S40°E, 15.7 ft. (24 lks.) dist., mkd. 1/4 S27 BT.
A larch, 44 ins. diam., bears S10°W, 16.3 ft. (25 lks.) dist., mkd. 1/4 S27.
A pine snag, 12 ins. diam., bears N60°W, 25.2 ft. (38 lks.) dist., mkd. 1/4 S22.

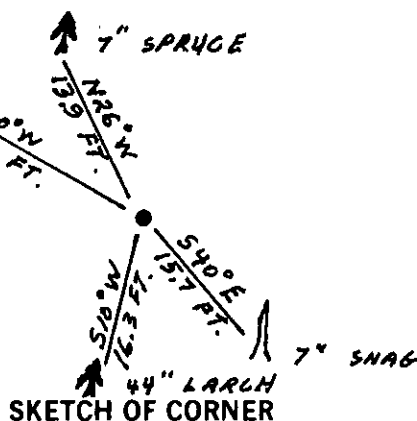
III. Established one new bearing tree:

- A spruce, 7 ins. diam., bears N26°W, 13.9 ft. dist., mkd. 1/4 S22 BT.

Painted red bands around the bearing trees and attached Land Survey Monument and Bearing Tree signs.

Set a 6 ft. galvanized steel guard post with Land Survey Marker and Property Boundary decals, west, 3 ft.

Magnetic Declination: 20° East



SKETCH OF CORNER

CERTIFICATION

I, Steve Boyer
certify the information shown herein is true and correct.
Ronald A. Pearson
Signature Ground Party Chief
Ronald A. Pearson
I, Ronald A. Pearson
certify that this Corner Record correctly represents work performed by me or under my direction in compliance with the "Corner Recordation Act" (70-22-101, et seq., M.C.A.)
Ronald A. Pearson
Signature of Surveyor & Seal
Date: 7/15/92 Reg. No. 9008 LS
Employer: U.S. FOREST SERVICE

Office of Clerk and Recorder, County of Lincoln. This "corner record" was filed for record on 8-13-92 was noted on the cross-index plat and is assigned page No. 5084, in book No. Coral M. Pearson

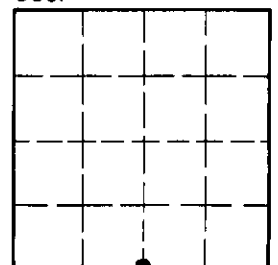
County Official

R-15

28 N 27 1/2 W

Cross Index No. _____ T. _____ R. _____ PMM

Sec. 22



• - corner this sheet