

INSTRUCTIONS

1. Original and/or subsequent record used to evaluate the corner position.
2. Description of evidence found, note discrepancies in the record, state method of establishing lost or obliterated corners.
3. Description of monument and accessories set to perpetuate the corner position.
4. Sketch of corner, show all pertinent data which can best be shown in a sketch example, corner marking, topography ties, position of accessories, etc.
5. Certification must be signed and sealed by Land Surveyor registered in the State of Montana.
6. Fill in Cross Index & Section Diagram at bottom of sheet.

CERTIFIED CORNER RECORDATION

Corner 1/4 of Secs. 22 & 23 T. 28 N. R. 27 1/2 W. P.M.M. Lincoln County

I. 1902 G.L.O. record by B. S. Adams and W. B. Weeks: Set a stone monument and marked two bearing trees.

1972 B.L.M. remonumentation record by J. E. French: "The 1/4 cor. of secs. 22 and 23, monumented with a limestone, 18x12x5 ins., set 12 ins. in the ground, mkd. 1/4 on the W face, from which the original bearing trees:

- A matured pine, 20 ins. diam., bears N46 1/2° E, 136 lks. dist., mkd. with an overgrown blaze.
A matured pine, 28 ins. diam., bears S58 1/2° W, 119 lks. dist., mkd. with an overgrown blaze.

At the corner point: Set an iron post, 30 ins. long, 2 1/2 ins. diam., 24 ins. in the ground, with brass cap mkd.

T28N R27 1/2W
1/4
S22 | S23
1972

from which new bearing trees:

- A larch, 10 ins. diam., bears S48° E, 44 lks. dist., mkd. 1/4 S23 BT.
A fir, 6 ins. diam., bears S20° W, 19 lks. dist., mkd. 1/4 S22 BT.

Bury the original stone alongside the iron post."

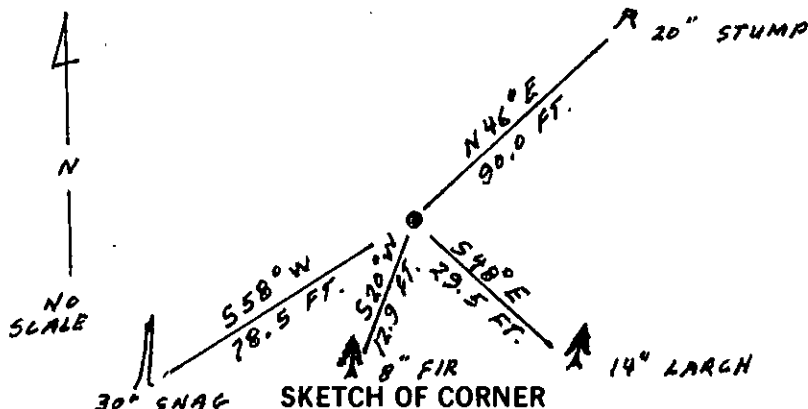
II. Found a 2 1/2 ins. diam. iron pipe, 6 ins. out of the ground, with brass cap mkd. as shown; from which:

- A pine stump, 20 ins. diam., bears N46° E, 90.0 ft. (136 lks.) dist., mkd. 4 S23 BT. (G.L.O.)
A pine snag, 30 ins. diam., bears S58° W, 78.5 ft. (119 lks.) dist., healed face. (G.L.O.)
A larch, 14 ins. diam., bears S48° E, 29.5 ft. (44 lks.) dist., mkd. BT. (B.L.M.)
A fir, 8 ins. diam., bears S20° W, 12.9 ft. (19 lks.) dist., healed face. (B.L.M.)

III. Painted red bands around the bearing trees and attached Land Survey Monument and Bearing Tree signs.

Set a 6 ft. galvanized steel guard post with Land Survey Marker and Property Boundary decals, south. 3 ft.

Magnetic Declination: 20° East



CERTIFICATION

I, Steve Boyer
certify the information shown herein is true and correct.

Ronald A. Pearson
Signature Ground Party Chief

I, Ronald A. Pearson
certify that this Corner Record correctly represents work performed by me or under my direction in compliance with the "Corner Recordation Act" (70-22-101, et seq., M.C.A.)

Ronald A. Pearson
Signature of Surveyor & Seal

Date: 7/22/92 Reg. No. 9008 LS

Employer: U.S. FOREST SERVICE

Office of Clerk and Recorder, County of Lincoln. This "corner record" was filed for record on 8-13-92 was noted on the cross-index plat and is assigned page No. 5063, in book No. Coral M. Pearson

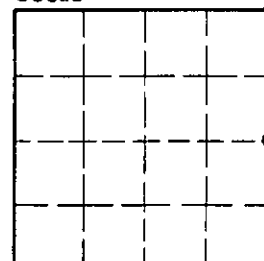
County Official

P-17

28 N 27 1/2 W

Cross Index No. _____ T. _____ R. _____ PMM

Sec22



• - corner this sheet