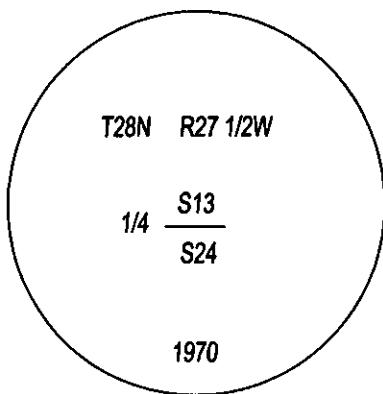
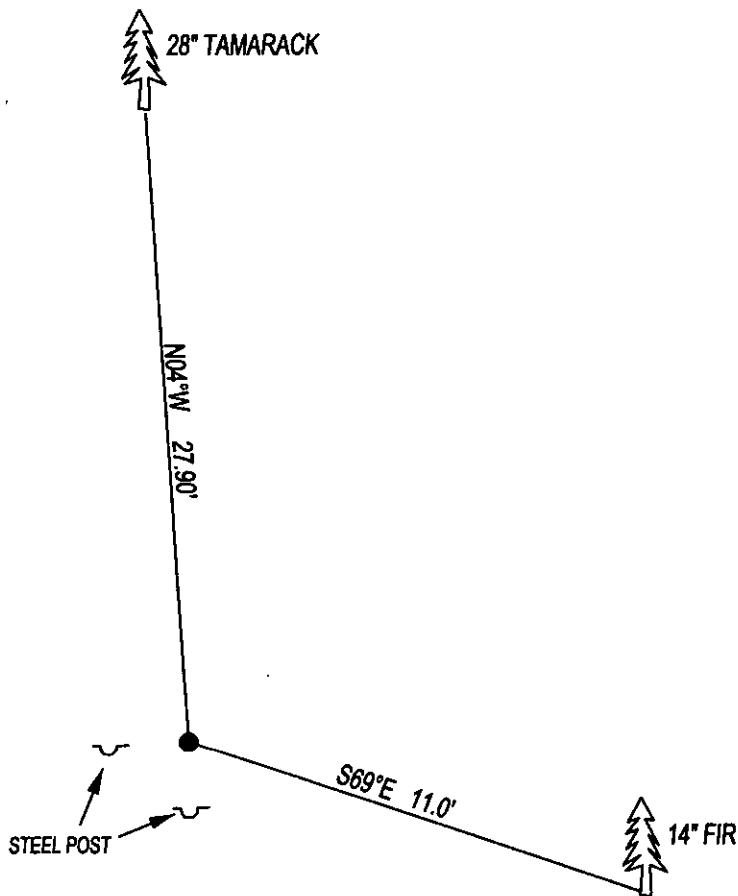


CERTIFIED CORNER RECORDATION

CORNER N1/4 SEC. 24 T. 28N R. 27 1/2W P.M.M., LINCOLN COUNTY

FOUND: 3 1/4" BRASS CAP STAMPED AS SHOWN, FROM WHICH;  
28" TAMARACK BEARS N04°W, 27.90' WITH OVERGROWN SCRIBE.  
14" FIR BEARS S69°E 11.0' WITH SCRIBED 1/4 S24 BT.  
STEEL POST 3 FEET SOUTH.

MAINTENANCE: REMOVED BRUSH AND TREE LIMBS FROM CORNER.  
SET A 5 FOOT STEEL POST 3 FEET WEST OF CORNER  
ATTACHED BT TAG'S AND PAINTED 6" BAND ON BT'S.



SKETCH OF CORNER

CERTIFICATION

I, DAN CROFT  
CERTIFY THE INFORMATION SHOWN HEREIN IS TRUE AND CORRECT.

SIGNATURE GROUND PARTY CHIEF

I, MARC J. CARSTENS  
CERTIFY THAT THIS CORNER RECORD CORRECTLY REPRESENTS WORK  
PERFORMED BY ME OR UNDER MY DIRECTION IN COMPLIANCE WITH THE  
"CORNER RECORDATION ACT" (70-22-101, ET SEQ., M.C.A.)

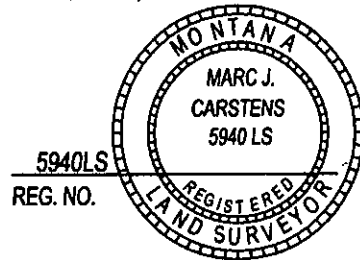
[Signature]  
SIGNATURE OF SURVEYOR & SEAL

07-26-13

DATE

CARSTENS SURVEYING

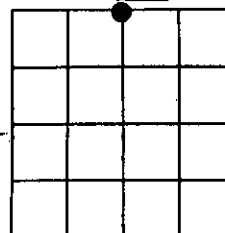
EMPLOYER



5940LS  
REG. NO.

OFFICE OF CLERK AND RECORDER, COUNTY OF LINCOLN  
THIS "CORNER RECORD" WAS FILED FOR REC/ 246492 BOOK: CCR CC&R'S PAGE: 12054 Pages: 1  
AND IS ASSIGNED PAGE NO. \_\_\_\_\_ IN BC RECORDED: 07/30/2013 10:30 KOI: CC&R'S  
TAMMY D. LAUER CLERK AND RECORDER  
FEE: \$0.00 BY: [Signature]  
FOR: CARSTENS LAND SURVEYING P.O. BOX 1374, POLSON, MONTANA  
COUNTY OFFICIAL  
CROSS INDEX NO. N-23 T. 28N R. 27 1/2W P.M.M.  
ADOPTED JULY 1, 1981, MONTANA BOARD OF PROFESSIONAL ENGINEERS & LAND SURVEYORS

SEC. 24



● CORNER THIS SHEET