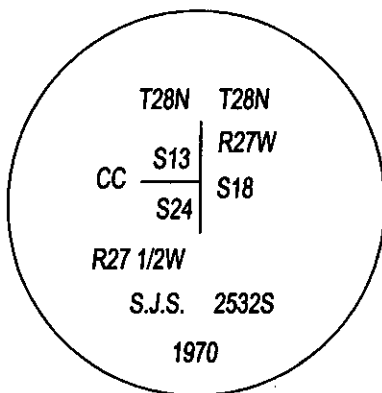
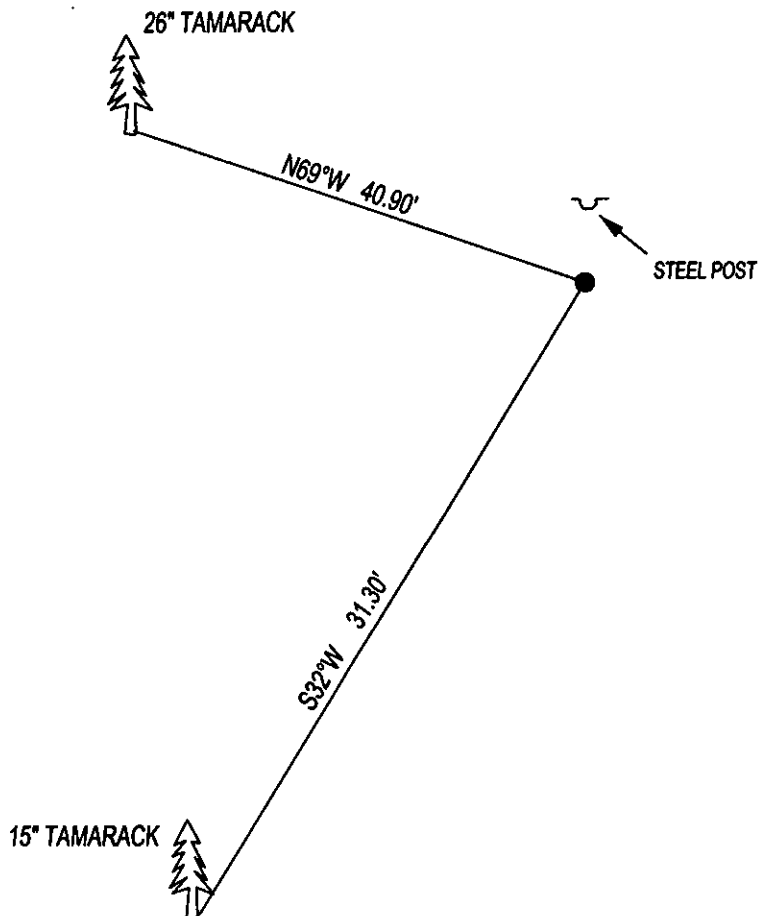


CERTIFIED CORNER RECORDATION

CORNER NE SEC. 24 T. 28N R. 27 1/2W P.M.M., LINCOLN COUNTY

FOUND: 3 1/4" BRASS CAP STAMPED AS SHOWN, FROM WHICH;
15" TAMARACK BEARS S32°W, 31.30' WITH SCRIBE.
26" TAMARACK BEARS N69°W 40.90' WITH OVERGROWN SCRIBE.
THE NW CORNER OF SECTION 19, T28N, R27W BEARS S05°E, 101.82'

MAINTENANCE: REMOVED BRUSH AND TREE LIMBS FROM CORNER.
ATTACHED BT TAG'S AND PAINTED 6" BAND ON BT'S.



SKETCH OF CORNER

CERTIFICATION

I, DAN CROFT
CERTIFY THE INFORMATION SHOWN HEREIN IS TRUE AND CORRECT.

SIGNATURE GROUND PARTY CHIEF

I, MARC J. CARSTENS
CERTIFY THAT THIS CORNER RECORD CORRECTLY REPRESENTS WORK
PERFORMED BY ME OR UNDER MY DIRECTION IN COMPLIANCE WITH THE
"CORNER RECORDATION ACT" (70-22-101, ET SEQ., M.C.A.)

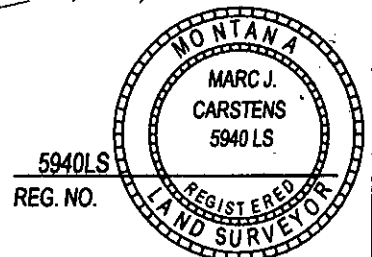
[Signature]
SIGNATURE OF SURVEYOR & SEAL

07-26-13

DATE

CARSTENS SURVEYING

EMPLOYER



5940LS
REG. NO.

OFFICE OF CLERK AND RECORDER, COUNTY OF LINCOLN

THIS "CORNER RECORD" WAS FILED FOR RECORD 246491 BOOK: CCR CC&R'S PAGE: 12053 Pages: 1

_____ WAS NOTED ON THE STATE OF MONTANA LINCOLN COUNTY

AND IS ASSIGNED PAGE NO. _____, IN BOOK RECORDED: 07/30/2013 10:25 KOI: CC&R'S

COUNTY OFFICIAL

TAMMY D. LAUER CLERK AND RECORDER

FEE: \$0.00

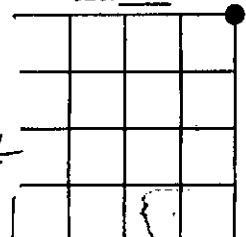
BY: [Signature]

FOR: CARSTENS LAND SURVEYING P.O. BOX 1374, POLSON, MONTANA

CROSS INDEX NO. N-25 T. 28N R. 27 1/2W P.M.M.

ADOPTED JULY 1, 1981, MONTANA BOARD OF PROFESSIONAL ENGINEERS & LAND SURVEYORS

SEC. 24



● CORNER THIS SHEET