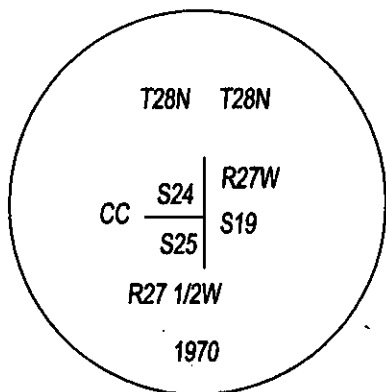
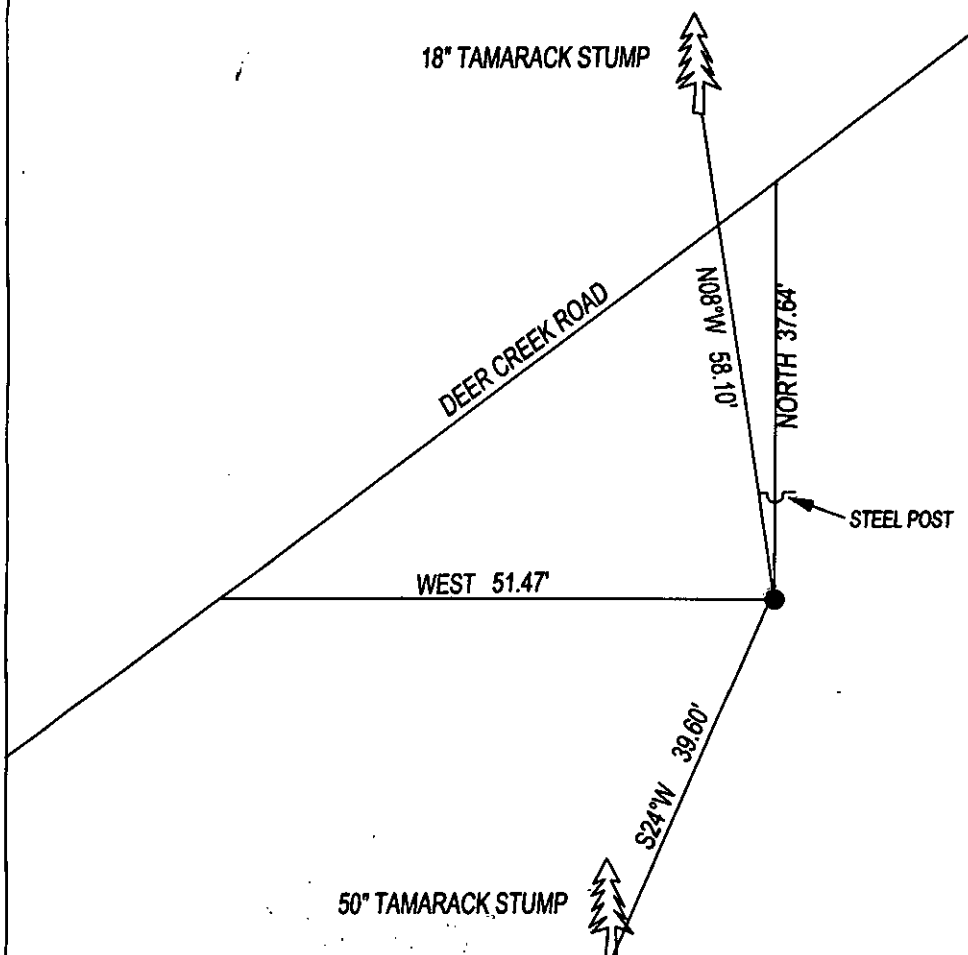


# CERTIFIED CORNER RECORDATION

CORNER SE SEC. 24 T. 28N R. 27 1/2W P.M.M., LINCOLN COUNTY

FOUND: 3 1/4" BRASS CAP STAMPED AS SHOWN, FROM WHICH;  
50" TAMARACK STUMP WITH TAG BEARS S24°W 39.60' WITH SCRIBE.  
18" TAMARACK STUMP WITH TAG BEARS N08°W 58.10'.  
THE SE CORNER OF SECTION 19, T28N, R27W BEARS S00°06'05"W, 96.57'.  
STEEL POST 3 FEET NORTH.

MAINTENANCE: REMOVED BRUSH AND TREE LIMBS FROM CORNER.  
ATTACHED BT TAG'S AND PAINTED 6" BAND ON BT.



SKETCH OF CORNER

## CERTIFICATION

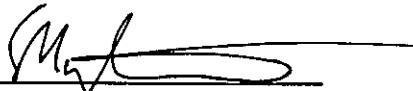
I, DAN CROFT

CERTIFY THE INFORMATION SHOWN HEREIN IS TRUE AND CORRECT.

SIGNATURE GROUND PARTY CHIEF

I, MARC J. CARSTENS

CERTIFY THAT THIS CORNER RECORD CORRECTLY REPRESENTS WORK  
PERFORMED BY ME OR UNDER MY DIRECTION IN COMPLIANCE WITH THE  
"CORNER RECORDATION ACT" (70-22-101, ET SEQ., M.C.A.)



SIGNATURE OF SURVEYOR & SEAL

07-26-13

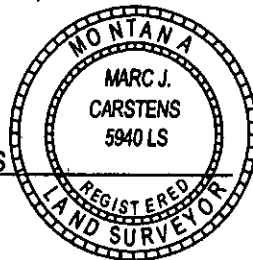
DATE

CARSTENS SURVEYING

EMPLOYER

5940LS

REG. NO.



OFFICE OF CLERK AND RECORDER, COUNTY OF LINCOLN

THIS "CORNER RECORD" WAS FILED FOR RE

AND IS ASSIGNED PAGE NO. \_\_\_\_\_ IN

\_\_\_\_\_

COUNTY OFFICIAL

CROSS INDEX NO. R-25 T. 28N R. 27 1/2W P.M.M.

ADOPTED JULY 1, 1981, MONTANA BOARD OF PROFESSIONAL ENGINEERS & LAND SURVEYORS

246490 BOOK: CCR CC&R'S PAGE: 12052 Pages: 1

STATE OF MONTANA LINCOLN COUNTY

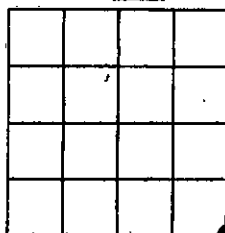
RECORDED: 07/30/2013 10:20 KOI: CC&R'S

TAMMY D. LAUER CLERK AND RECORDER

FEE: \$0.00

BY:  FOR: CARSTENS LAND SURVEYING P.O. BOX 1374, POLSON, MONTANA

SEC. 24



● CORNER THIS SHEET