

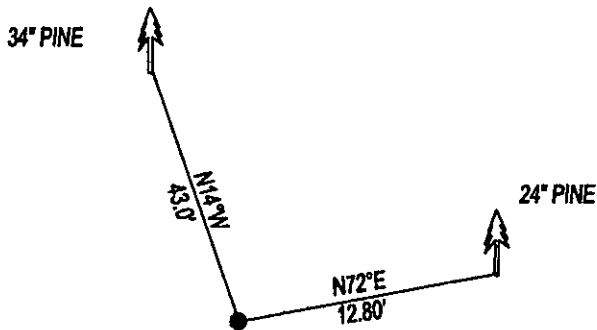
CERTIFIED CORNER RECORDATION

Corner S 1/4 SEC. 36 T. 28N R. 27 1/2 W P.M.M. County LINCOLN

RECORD: SET A SLATE STONE 24X8X6 18 INS. INTO THE GROUND WITH 1/4 ON NORTH, FROM WHICH:
 A 12" PINE BEARS N76°E 19 LKS (12.54') SCRIBED 1/4 S36 BT
 A 24" PINE BEARS N16°W 65 LKS (42.90') SCRIBED 1/4 S36 BT

FOUND: STONE WELL SET, WITH 1/4 ON NORTH FACE, FROM WHICH:
 A 24" PINE BEARS N72°E 12.80' WITH SCRIBE.
 A 34" PINE BEARS N14°W 43.0' NO SCRIBE FACE HAS BEEN BURNT.

ATTACHED BT TAGS AND PAINTED A RED 6" BAND AND SCRIBE RED



SKETCH OF CORNER

CERTIFICATION

I, DAN CROFT
 certify the information shown herein is true and correct.

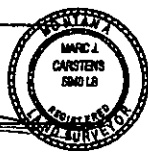
Signature Ground Party Chief

I, MARC J. CARSTENS
 certify that this Corner Record correctly represents work performed by me or under my direction in compliance with the "Corner Recordation Act" (70-22-101, et seq., M.C.A.)

Signature of Surveyor & Seal

Date: 7-2009 Reg. No. 5940 LS

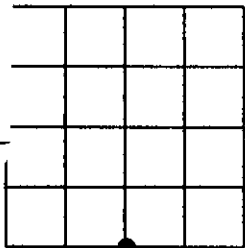
Employer: CARSTENS LAND SURVEYING



Office of Clerk and Recorder, County of LINCOLN. This "corner

record" was filed for record on _____
 was noted on the cross-index plat on _____
 book No. _____

220233 BOOK: CCR CC&R'S PAGE: 11314 Pages: 1 Sec. 36
 STATE OF MONTANA LINCOLN COUNTY
 RECORDED: 07/13/2009 9:35 KOI: CC&R'S
 TAMMY D. LAUER CLERK AND RECORDER
 FEE: \$0.00 BY Tammy D. Lauer
 TO: CARSTENS LAND SURVEYING
 Cross Index No. Z-23 T. 28N R. 27 1/2W P.M.M.



• corner this sheet