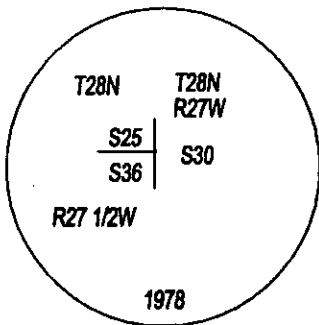
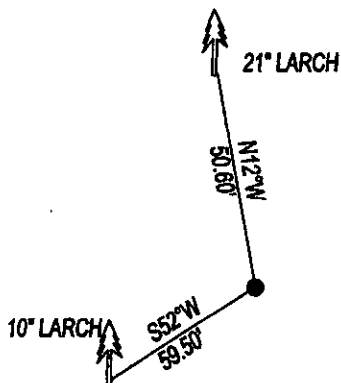


CERTIFIED CORNER RECORDATION

Corner NE CORNER SEC. 36 T. 28N R. 27 1/2W P.M.M. County LINCOLN

FOUND: 3 1/4 INCH BRASS 6" ABOVE GROUND, STAMPED AS SHOWN, FROM WHICH:  
A 20" PINE BEARS S52°W, 59.50' WITH SCRIBE.  
A 21" LARCH BEARS N12°W, 50.60' SCRIBE OVERGROWN.

MAINTENANCE: ATTACHED BT TAGS TO ALL BEARING TREES AND PAINTED A 6" BAND.



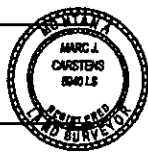
SKETCH OF CORNER

CERTIFICATION  
I, DAN CROFT  
certify the information shown herein is true and correct.

Signature Ground Party Chief  
MARC J. CARSTENS  
certify that this Corner Record correctly represents work performed by me or under my direction in compliance with the "Corner Recordation Act" (10-22-101, et seq., M.C.A.)

Signature of Surveyor & Seal  
[Signature]

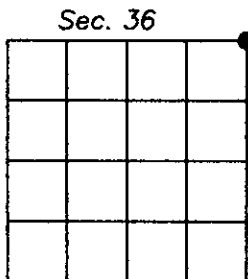
Date: 7-2009 Reg. No. 5940 LS  
Employer: CARSTENS LAND SURVEYING



Office of Clerk and Recorder, County of LINCOLN. This "corner record" was filed for record on 220228 BOOK: CCR CC&R'S PAGE: 11309 Pages: 1  
STATE OF MONTANA LINCOLN COUNTY  
was noted on the cross-index pl RECORDED: 07/13/2009 9:10 KOI: CC&R'S  
TAMMY D. LAUER CLERK AND RECORDER  
book No.                      FEE: \$0.00 BY: [Signature]  
TO: CARSTENS LAND SURVEYING

Cross Index No. V-25 T. 28N R. 27 1/2 W PMM

Adopted July 1, 1981, Montana Board of Professional Engineers & Land Surveyors



• corner this sheet