

STATE OF MONTANA LINCOLN COUNTY

RECORDED: 12/17/2004 8:32 KOI: CC&R'S

CORAL M. CUMMINGS CLERK AND RECORDER

FEE: \$0.00

BY: _____

TO: FILED

CERTIFIED CORNER RECORDATION

Corner NE cor. S36 T 28 N. R. 27 1/2 W. P.M.M. LINCOLN County

I. Record: 1891 - GLO survey by Newton Orr, resurveyed 1902 by Burton S. Adams and Wm. C. Weeks set a limestone 20x8x8 ins., 15 ins. in the ground, marked with 5 notches on the N and 1 notch on the S edge and CC on the W face from which:

A Fir, 8 ins. diam. bears S50°45'W. 14 lks. dist. (9.24 ft), mkd. T28N R271/2W S36 BT.

A Fir, 12 ins. diam., bears N53°W. 30 links (19.80 ft), mkd. T28N R271/2W S25 BT.

1978 BLM Remoumention by Christiasen: Set an iron post, 30 ins. long, 2 1/2 ins. diam., 22 ins. in the ground, with brass cap mkd. as shown below from which:

A fir, stump, 14 ins. diam., bears S. 50°45'W., 9.24 ft. dist. no visible mks.

A fir, stump, 18 ins. diam., bears N.53°W., 19.80 ft. dist., mkd. T28 R271/2W S25 BT.

A pine, 16 ins., diam., bears S. 53°30'W., 91 lks. (60.06 ft.) dist., mkd. T28 R271/2W S36

BT.

A larch, 14 ins. diam., bears N. 12°30'W., 77 lks. (50.82 ft.), dist., mkd. T28 R271/2W S25

BT.

II. Found: A 3 1/4 in. diam. BLM brass cap on a 2 1/2 ins. diam. iron pipe firmly set from which:

A pine, 17 ins. diam., bears S.53°30'W., 60.06 ft. dist. with visible scribing.

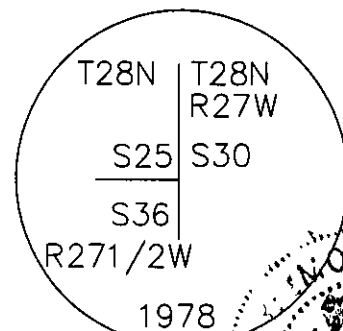
A larch, 17 ins. diam., bears N.12°30'E., 50.82 ft. dist. with visible scribing.

III. Perpetuation:

Painted faces and 6 in. wide red bands to all bearing trees and attached bearing tree and Land Survey Monument signs.

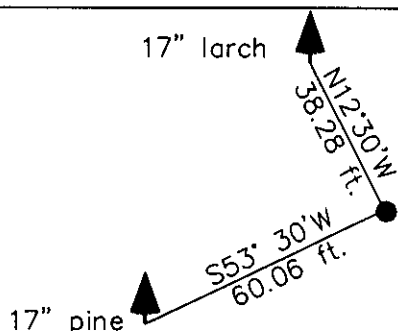
Magnetic declination: 20° East assumed

Equipment used: Hand compass and loggers tape



Kootenai Surveyors Inc., 314 California Av., Libby, MT. 59923 (406) 293-4354

KSI Project: MARL ACM - PCTC



SKETCH OF CORNER

CERTIFICATION

I, Doug Schuhknecht
certify the information shown herein is true and correct.

Signature Ground Party Chief

I, Alvah F. Hughes
certify that this Corner Record correctly represents work performed by me or under my direction in compliance with the "Corner Recordation Act" (70-22-101, et seq., M.C.A.)

Signature of Surveyor & Seal 7322LS

Date: 12/1/2004 Reg. No. 7322-LS

Employer: Kootenai Surveyors Inc.

Office of Clerk and Recorder, County of Lincoln This "corner

record" was filed for rec

was noted on the cross

book No. _____

TO: FILED

181331 BOOK: CCR CC&R'S

PAGE: 10727 Pages: 1

STATE OF MONTANA LINCOLN COUNTY

RECORDED: 12/17/2004 8:32 KOI: CC&R'S

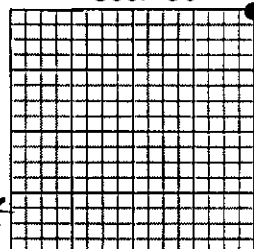
CORAL M. CUMMINGS CLERK AND RECORDER

FEE: \$0.00

BY: Joanni BussuCross Index No. V 25T. 28 R. 271/2W P.M., MT

Adopted July 1, 1981, Montana Board of Professional Engineers & Land Surveyors

Sec. 36



• corner this sheet