

CERTIFIED CORNER RECORDATION

Corner N 1/4 S36 T 28 N. R. 27 1/2 W. P.M.M. LINCOLN County

I. Record: 1903 GLO survey by Burton S. Adams and Wm. C. Weeks: Set a limestone 12x8x8 ins., 8 ins. in the ground, marked 1/4 on the N. face from which:

- A pine, 9 ins. diam., bears N60°E., 74 lks. dist (48.84 ft) mkd. 1/4 S25 BT.
- A pine, 8 ins. diam., bears S22°E., 36 lks. (13.20 ft) mkd. 1/4 S22 BT.

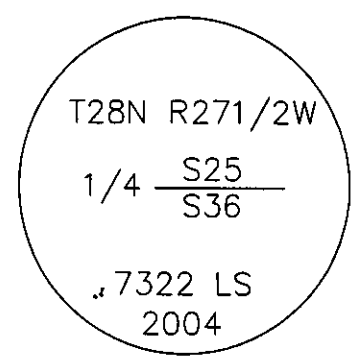
II. Found: During field search of area no monument or related accessories were found.

III. Perpetuation: At a computed point determined from survey, we set a Alum. pipe, 2 1/2 ins. diam. 30 ins. long 24 ins. in the ground, with a 3 1/4 ins. diam. Alum. cap marked as shown below from which:

- A pine, 17 ins. diam., bears S.10°E., 24.00 ft. dist., scribed 1/4 S36 BT.
- A fir, 6 ins. diam., bears N.58°W., 14.00 ft. dist., scribed 1/4 S25 BT.

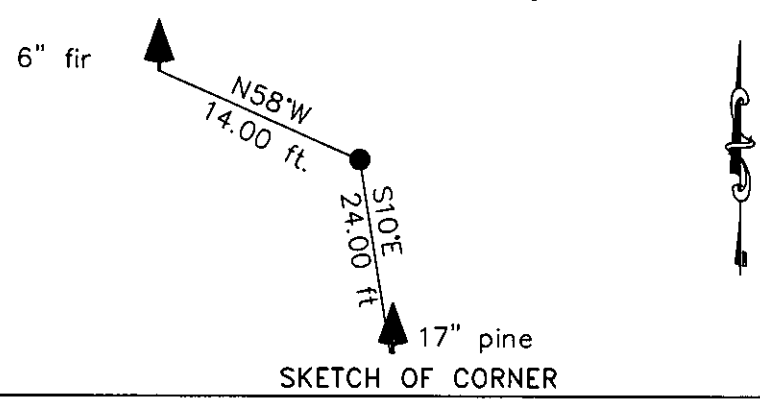
Painted faces red and 6 in. wide red bands to all bearing trees and attached Land Survey Monument and Bearing tree signs.
 Raise a mound of stone 2 ft. diam. around set monument.
 Set a steel fence post 3 ft. E. of monument.

Magnetic declination: 20° East assumed
 Equipment used: Hand compass and loggers tape



Kootenai Surveyors Inc., 314 California Av., Libby, MT. 59923 (406) 293-4354

KSI Project: Marl AMC - PCTC



CERTIFICATION
 I, Doug Schuhknecht
 certify the information shown herein is true and correct.
 Signature Ground Party Chief
 I, Alvah F. Hughes
 certify that this Corner Record correctly represents work performed by me or under my direction in compliance with the "Corner Recordation Act", (70-22-101, et seq., M.C.A.)
 Signature of Surveyor & Seal
 Date: 12/1/2004 Reg. No. 7322-LS
 Employer: Kootenai Surveyors Inc.



Office of Clerk and Recorder, County of Lincoln This "corner record" was filed for rec: 181329 BOOK: CCR CC&R'S PAGE: 10725 Pages: 1
 was noted on the cross-book No. _____ STATE OF MONTANA LINCOLN COUNTY
 RECORDED: 12/17/2004 8:30 KOI: CC&R'S
 CORAL M. CUMMINGS CLERK AND RECORDER
 FEE: \$0.00 BY: Jeanne Dennis Deputy

Cross Index No. V 23 T. 28N R. 27 1/2 W. P.M.M., MT

