

CERTIFIED CORNER RECORDATION

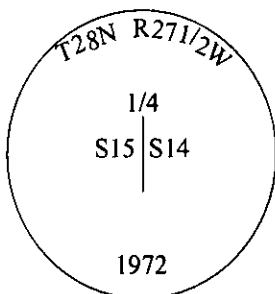
Corner 1/4 **Secs.** 14&15 **T.** 28N **R.** 27 1/2W **P.M., MT** **Lincoln** **County**

I. 1902 G.L.O. Record by Burton S. Adams et.al.: Set a limestone, 15x12x4 ins., 10 ins. in the ground for 1/4 sec. cor. mkd. "1/4" on W. face.

Established two bearing trees:

- A tamarack, 6 ins. diam., bears S86°E, 53 lks. dist., mkd. "1/4 S14 BT".
- A tamarack, 8 ins. diam, bears N48°W, 44 lks. dist., mkd. "1/4 S15 BT".

1972 B.L.M. Remonumentation by Joseph E. French: The 1/4 sec. cor. of secs. 14 and 15, monumented with a limestone, 15x12x4 ins., set 5 ins. in the ground, mkd. "1/4" on the W. face. and witnessed by the original bearing trees. At the corner point, set an iron post, 30 ins. long, 2 1/2 ins. diam., 24 ins. in the ground, with brass cap mkd. as shown.



Bury the original stone alongside and raise a flat mound of stone, 3.0 ft. diam., around the iron post.

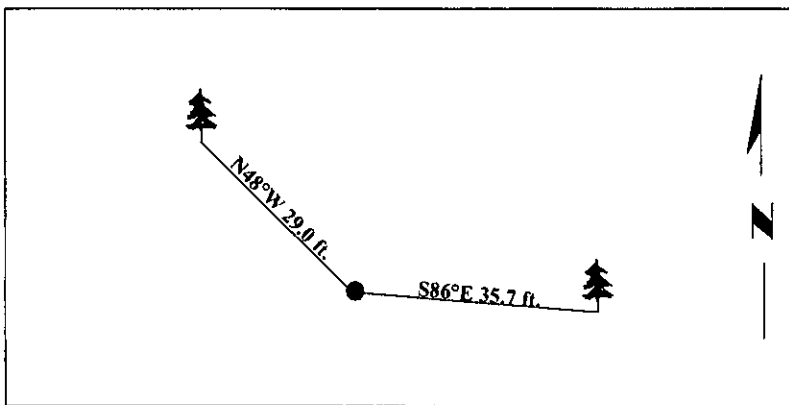
II. Found a 2 1/2 in. diam. iron pipe, firmly set, protruding 4 ins. above the ground, with a 3 1/4 in. diam. brass cap, mkd. as shown.

from which:

- A larch, 21 ins. diam., bears S86°E, 35.7 ft. dist., 35.0 ft. to healed face. (GLO-record)
- A larch, 21 ins. diam., bears N48°W, 29.6 ft. dist., 29.0 ft. to healed face. (GLO-record)

III. Painted bearing trees and attached Land Survey Monument and Bearing Tree signs.

Magnetic Declination: 20° East



SKETCH OF CORNER

CERTIFICATION

I. Rex O. Rice
certify the information shown herein is true and correct.

Rex O. Rice

I. Steven A. Boyer
certify that this Corner Record correctly represents work performed by, or under my direction in compliance with the Corner Recordation Act (7-28-101, et seq., M.C.A.)

Steven A. Boyer
Signature of Surveyor & Seal

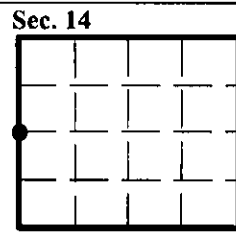
Date: 6/16/98

Reg. No.: 9750LS

Employer: U.S. FOREST SERVICE

Office of Clerk and Recorder, County of Lincoln. This "corner record" was filed for record on 8-19-98 and was noted on the cross-index plat and is assigned page No. 10200 in book No. _____

Carol M. Cummins
 County Official



● - corner this sheet