

CERTIFIED CORNER RECORDATION

Corner 1/4 Secs. 13&14 T. 28N R. 27 1/2W P.M., MT Lincoln County

- I. 1902 G.L.O. Record by Burton S. Adams et.al.: Set a slate stone, 15x12x10 ins., 10 ins. in the ground for 1/4 sec. cor. mkd. "1/4" on W. face.

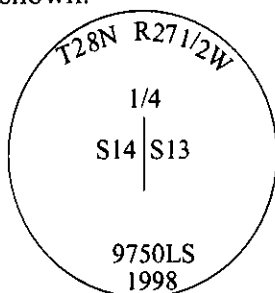
Established two bearing trees:

A tamarack, 20 ins. diam., bears N85°15'E, 36 lks. dist., mkd. "1/4 S13 BT".
A pine, 8 ins. diam., bears S47°W, 50 lks. dist., mkd. "1/4 S14 BT".

- II. Found stone, 10x12 ins., protruding 5 ins. above the ground, firmly set, mkd. "1/4" on W. face.
from which:

A larch snag, 23 ins. diam., bears N85°E, 23.8 ft. dist., with a burned, scarred face, no visible scribe. (GLO-record)
A rootwad, bears S47°W, 33.0 ft. dist. (GLO-record)

- III. At the exact corner position, as determined by the found original stone and witnessed by one original bearing tree, set a 2 1/2 in. diam., 30 ins. long aluminum pipe, 16 ins. into ground to bedrock, with a 3 1/4 in. diam. aluminum cap, mkd. as shown.

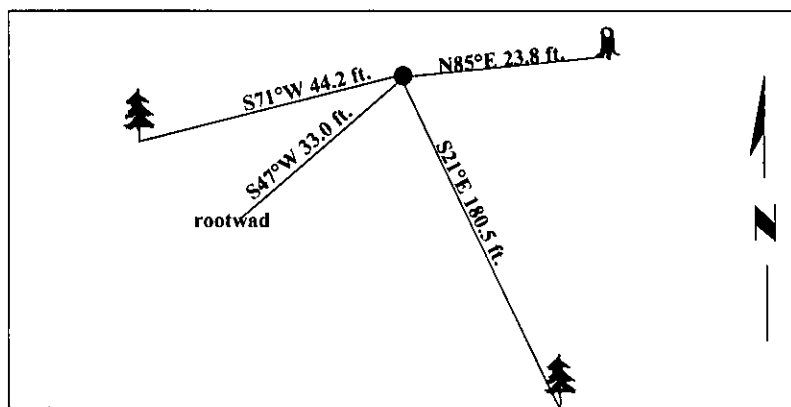


Established two new bearing trees:

A larch, 15 ins. diam., bears S21°E, 180.5 ft. dist., mkd. "1/4 S13 BT".
A larch, 15 ins. diam., bears S71°W, 44.2 ft. dist., mkd. "1/4 S14 BT".

Buried original stone alongside monument and raise a collar of stone to top of monument.
Painted bearing trees and attached Land Survey Monument and Bearing Tree signs.

Magnetic Declination: 20° East



SKETCH OF CORNER

CERTIFICATION	
I. <u>Rex O. Rice</u>	certify the information shown herein is true and correct.
<u>Rex O. Rice</u>	
I. <u>Steven A. Boyer</u>	certify that this Corner Record correctly represents work performed by me or under my direction in compliance with the "Corner Recordation Act" (70-22-101, et seq., M.C.A.)
<u>Steven A. Boyer</u>	
Date: <u>6/17/98</u>	Signature of Surveyor & Seal
Reg. No.: <u>9750LS</u>	
Employer: <u>U.S. FOREST SERVICE</u>	

Office of Clerk and Recorder, County of Lincoln. This "corner record" was filed for record on 8-19-98 and was noted on the cross-index plat and is assigned page No. 10199 in book No. .
Coral M. Cumming By DB
County Official

Sec. 13

• - corner this sheet