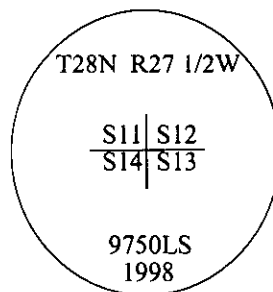


-CERTIFIED CORNER RECORDATION

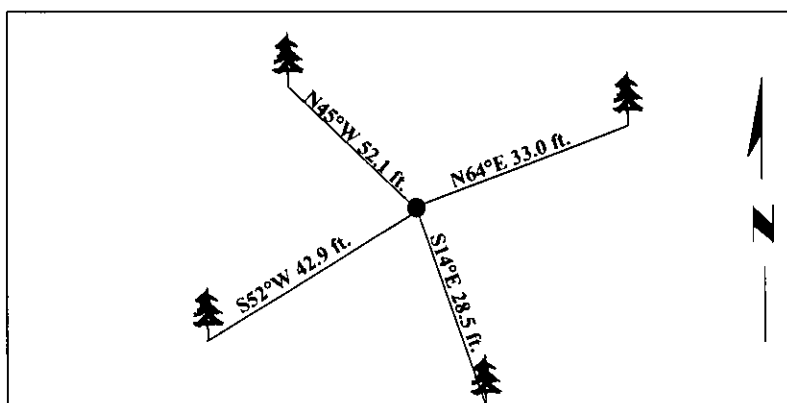
Corner Sec. Cor. Secs. 11,12,13,14 T. 28N R. 27 1/2W P.M., MT Lincoln County

- I. 1902 G.L.O. Record by Burton S. Adams et.al.: Set a limestone, 15x10x8 ins., 10 ins. in the ground for the cor. of secs. 11,12,13,14, mkd. with 4 notches on S. and 1 notch on E. edges. Established four bearing trees.
- II. Found stone, 15x10x8 ins. diam., lying on the surface of the ground, approximately 30.0 ft. from determined corner position, mkd. with 4 notches on S. and 1 notch on the E. edges.
- from which:
- A larch, 25 ins. diam., bears N64°E, 33.0 ft. dist., with visible scribing. (record)
- A larch, 25 ins. diam., bears S14°E, 28.5 ft. dist., with visible scribing. (record-S23°30'E, 38 lks., 25.08 ft.)
- A larch, 31 ins. diam., bears S52°W, 42.9 ft. dist., with a healed face. (record)
- A larch, 26 ins. diam., bears N45°W, 52.1 ft. dist., with a healed face. (record)
- III. At the exact corner position, as determined by using distance-distance intersect, from found original G.L.O. bearing trees, set a 2 1/2 in. diam., 30 ins. long aluminum pipe, 26 ins. in the ground, with a 3 1/4 in. diam. aluminum cap, mkd. as shown.



Painted bearing trees and attached Land Survey Monument and Bearing Tree signs.

Magnetic Declination: 20° East



SKETCH OF CORNER

CERTIFICATION

I, Mark Federman
certify the information shown herein is true and correct.

Steven A. Boyer
certify that this Corner Record correctly represents work performed by me or under my direction in compliance with the "Corner Recordation Act" (70-22-101, et seq., M.C.A.)

Signature of Surveyor & Seal

Date: 6/17/98

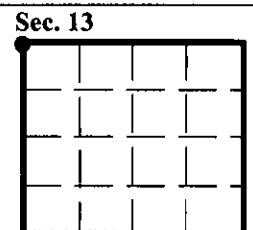
Reg. No.: 9750LS

Employer: U.S. FOREST SERVICE

MONTANA
STEVEN A. BOYER
9750LS
REGISTERED
LAND SURVEYOR

Office of Clerk and Recorder, County of Lincoln. This "corner record" was filed for record on 8-19-98 and was noted on the cross-index plat and is assigned page No. 101.66 in book No. _____.

Coral M. Cummings By RB
County Official



• - corner this sheet