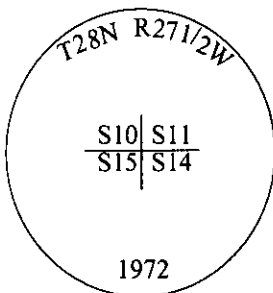


-CERTIFIED CORNER RECORDATION

Corner Sec. Cor. Secs. 10,11,14,15 T. 28N R. 27 1/2W P.M., MT Lincoln County

I. 1902 G.L.O. Record by Burton S. Adams et.al.: Set a limestone, 15x12x8 ins., 10 ins. in the ground for the cor. of secs. 10,11,14,15, mkd. with 4 notches on S. and 2 notches on E. edges. Established four bearing trees.

1972 B.L.M. Remonumentation by Joseph E. French: The cor. of secs. 10,11,14,15, monumented with a limestone, 15x12x8 ins., firmly set, 10 ins. in the ground, mkd. as described in the surveyor general and witnessed by three of the original bearing trees. At the corner point, set an iron post, 30 ins. long, 2 1/2 ins. diam., 24 ins. in the ground, with brass cap mkd. as shown.



Established one new bearing tree and bury the original stone alongside and raise a flat mound of stone, 2.5 ft. base, around the iron post.

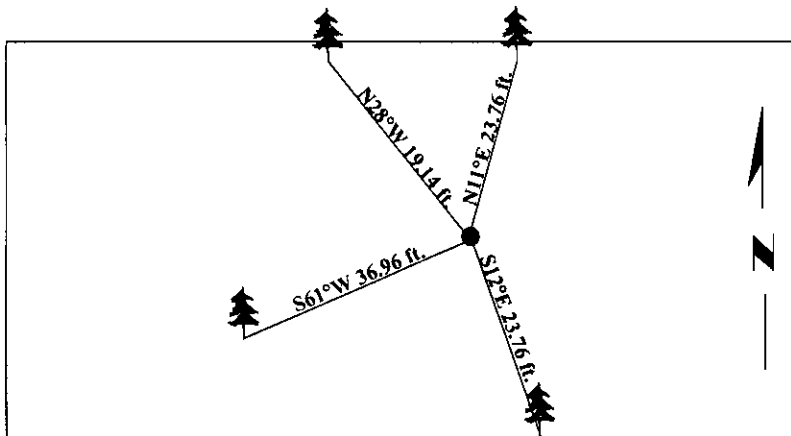
II. Found a 2 1/2 in. diam. iron pipe, firmly set, protruding 2 ins. above the ground, with a mound of stone to top, with a 3 1/4 in. diam. brass cap, mkd. as shown.

from which:

- A spruce, 9 ins. diam., bears N11°E, 23.76 ft. dist., with a healed face. (BLM-record)
- A larch, 26 ins. diam., bears S12°E, 23.76 ft. dist., with a healed face. (GLO-record)
- A larch, 32 ins. diam., bears S61°W, 36.96 ft. dist., mkd. "T28N R27 1/2W S15 BT". (GLO-rec)
- A larch, 36 ins. diam., bears N28°W, 19.14 ft. dist., mkd. "T28N R27 1/2W S10 BT". (GLO-rec)

III. Painted bearing trees and attached Land Survey Monument and Bearing Tree signs.

Magnetic Declination: 20° East

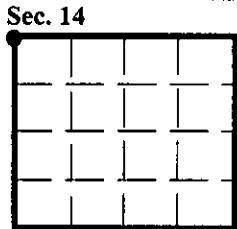


SKETCH OF CORNER

CERTIFICATION	
I, <u>Joel McElmurry</u>	
certify the information shown herein is true and correct.	
I, <u>Steven A. Boyer</u>	
certify that this Corner Record correctly represents work performed by me or under my direction in compliance with the "Corner Recordation Act" (70-23-101 et seq., M.C.A.)	
Signature of Surveyor & Seal	
Date: <u>6/17/98</u>	
Reg. No.: <u>9750LS</u>	
Employer: <u>U.S. FOREST SERVICE</u>	

Office of Clerk and Recorder, County of Lincoln. This "corner record" was filed for record on 8-19-98 and was noted on the cross-index plat and is assigned page No. 10161 in book No. _____.

County Official



● - corner this sheet