

-CERTIFIED CORNER RECORDATION

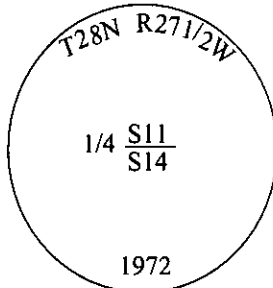
Corner 1/4 **Secs.** 11&14 **T.** 28N **R.** 27 1/2W **P.M., MT** **Lincoln** **County**

I. 1902 G.L.O. Record by Burton S. Adams et.al.: Set a granite stone, 12x10x6 ins., 8 ins. in the ground for 1/4 sec. cor. mkd. "1/4" on N. face.

Established two bearing trees:

- A pine, 8 ins. diam., bears N05°15'E, 14 lks. dist., mkd. "1/4 S11 BT".
- A pine, 6 ins. diam., bears S32°45'W, 12 lks. dist., mkd. "1/4 S14 BT".

1972 B.L.M. Remonumentation by Joseph E. French: The 1/4 sec. cor. of secs. 11 and 14, monumented with a granite stone, 12x10x6 ins., firmly set, 8 ins. in the ground, mkd. "1/4" on the N. face, and witnessed by the original bearing trees. At the corner point, set an iron post, 30 ins. long, 2 1/2 ins. diam., 24 ins. in the ground, with brass cap mkd. as shown.



Bury the original stone alongside and raise a flat mound of stone, 3.0 ft. base, around the iron post.

II. Found a 2 1/2 in. diam. iron pipe, firmly set, protruding 4 ins. above the ground, surrounded by a flat mound of stone, with a 3 1/4 in. diam. brass cap, mkd. as shown.

from which:

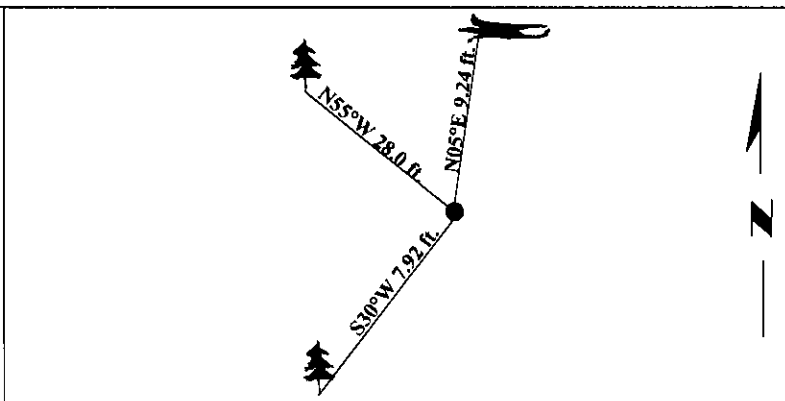
- A dead laying down pine, 12 ins. diam., bears N05°E, 9.24 ft. dist., with a bearing tree sign attached, visible scribing. (GLO-record)
- A pine, 10 ins. diam., bears S30°W, 7.92 ft. dist., mkd. "1/4 S14 BT". (GLO-record)

III. Established one new bearing tree:

- A fir, 12 ins. diam., bears N55°W, 28.0 ft. dist., mkd. "1/4 S11 BT".

Painted bearing trees and attached Land Survey Monument and Bearing Tree signs.

Magnetic Declination: 20° East



SKETCH OF CORNER

CERTIFICATION	
I. <u>Joel McElmurry</u>	certify the information shown herein is true and correct.
<i>Joel McElmurry</i>	
I. <u>Steven A. Boyer</u>	certify that this Corner Record correctly represents work performed by me or under my direction in compliance with the "Corner Recordation Act" 19-22-101, et seq., M.C.A.
<i>Steven A. Boyer</i>	Signature of Surveyor & Seal
Date: <u>6/17/98</u>	
Reg. No.: <u>9750LS</u>	
Employer: <u>U.S. FOREST SERVICE</u>	

Office of Clerk and Recorder, County of Lincoln. This "corner record" was filed for record on 8-19-98 and was noted on the cross-index plat and is assigned page No. 10160 in book No. _____

Carol M. Cummings By DB
County Official

