

CERTIFIED LAND CORNER RECORDATION

SEC. 27 AND 28 TWP. 27 N., R. 34 W., M.P.M.

DESCRIPTION OF CORNER EVIDENCE FOUND, AND ORIGINAL RECORD (IF KNOWN)

1. Original stone.
2. Original corner destroyed by road.
3. Not previously set.
4. Original stone.

NOTE: Numbers refer to sketch on back.

DESCRIPTION OF MONUMENT AND ACCESSORIES ESTABLISHED TO PERPETUATE THE ORIGINAL LOCATION OF THIS CORNER:

Date of work: Oct. 1971

1. Original stone.
2. Not set this survey.
3. Set a steel pin in fence line. Set location poster on fence above corner. No trees available for bearing trees.
4. Original Stone.

SKETCH, WITH COURSE AND DISTANCE TO ADJACENT CORNERS IF DETERMINED IN THIS SURVEY.
(MAY SKETCH OR PASTE REPRODUCTION ON REVERSE SIDE.)

SEE REVERSE

Surveyor's Seal

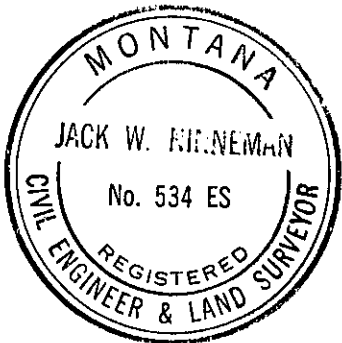
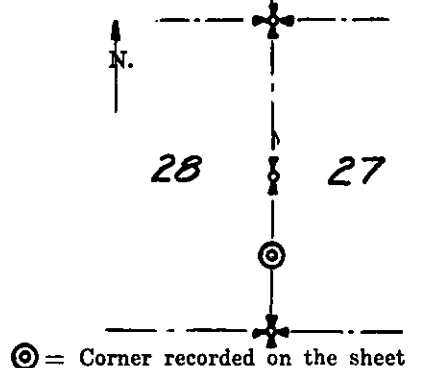
I, Jack H. Ninneman
certify that the information shown herein is true and correct.

Jack H. Ninneman
Signature of Ground Party Chief

I, Jack W. Ninneman
certify that I have carefully performed or reviewed the work done on the diagrammed corner as reported on this recordation form and approve the same.

Jack W. Ninneman
Signature of Surveyor

DIAGRAM OF CORNER:



Mont. 534 ES
Registration Number

Office of Clerk and Recorder, County of Lincoln

This "corner record" was filed for record on the 14th day of January 1972, was noted on the cross-index plat and is assigned page No. 257, in book No. 1

Blanca L. Vaughan by Betty Stouder
County Official Deputy

Cross Index No. 713 T. 27 R. 34 Mer. 13

342

