

CERTIFIED CORNER RECORDATION

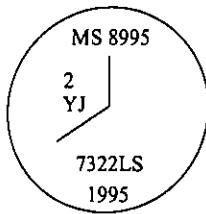
**Corner MS 8995 COR. 2 Sec. 12 T. 27N R. 31W P.M., MT. Lincoln County
Y.J. LODE**

I. 1909 Original Mineral Survey No. 8995 by Aurthur E. Lee et al: Cor. No. 2. A tamarack post 4 ft. long, 4 ins. sq., 2 ft. in the ground, with mound of stone, scribed Y.J. 2-8995.

A blazed dead fir tree, 14 ins. diam., bears S 76°W, 15.8 ft. dist., scribed B.T. Y.J. 2-8995.
A blazed dead tamarack tree, 12 ins. diam., bears N 10°W, 54.0 ft. dist., scribed B.T. Y.J. 2-8995.

II. No evidence found.

III. At the position determined by survey, set a 2 1/2 in. diam. alum. pipe, 30 ins. long, 26 ins. in the ground with a 3 1/4 in. diam. alum. cap mkd. as shown:



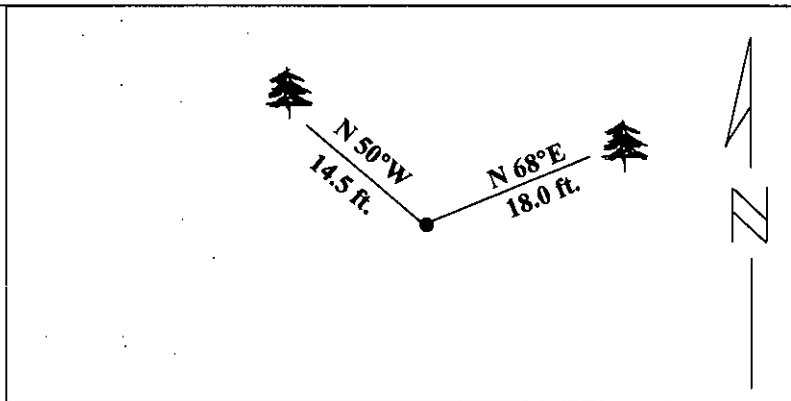
from which:

A hemlock, 9 ins. diam., bears S68°W, 18.0 ft. dist., mkd. "2 YJ 8995 BT".
A fir, 8 ins. diam., bears N50°W, 14.5 ft. dist., mkd. "2 YJ 8995 BT".

Painted red bands around the bearing trees and attached Land Survey Monument and Bearing Tree signs.

Set a 6 ft. galvanized steel guard post with Land Survey Marker and Property Boundry decals West 5.0 ft. dist. form corner.

Magnetic Declination: 20° East.



SKETCH OF CORNER

<p style="font-size: small;">CERTIFICATION</p> <p>I, <u>Thomas M. Hommel</u> certify the information shown herein is true and correct.</p> <p style="text-align: center;"><i>Thomas M. Hommel</i> Signature Ground Party Chief</p> <p>I, <u>Alvah F. Hughes</u> certify that this Corner Record correctly represents work performed by me or under my direction in compliance with the "Corner Recordation Act" (70-22-101, et seq., M.C.A.)</p> <p style="text-align: center;"><i>Alvah F. Hughes</i> Signature of Surveyor & Seal</p> <p>Date: <u>1/16/96</u></p> <p>Reg. No.: <u>7322LS</u></p> <p>Employer <u>U.S. FOREST SERVICE</u></p>	
---	--

Office of Clerk and Recorder, County of LINCOLN. This "corner record" was filed for record on JULY 25, 1997 was noted on the cross-index plat and is assigned page No. 9686 in book No. _____

CORAL M. CUMMINGS *By ALB*
County Official

Sec. 12

• - corner this sheet