

CERTIFIED CORNER RECORDATION

Corner MS 8995 COR. 1 Sec. 12 T. 27N R. 31W P.M., MT. Lincoln County  
MASCOT LODE

I. 1909 Origiand Mineral Survey No. 8995 by Aurthur E. Lee at. et.: Cor. No. 1, Identical with Cor. No. 3. Survey No. 7431 Eureka No. 2 Pl. A tamarack post 4 ft. long 4 ins. square, set 2 ft. in the ground with a mound of stone, scribed 1-8995, from which:

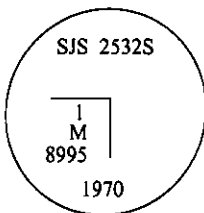
A blazed tamarack, 17 ins. diam., bears North, 25.9 ft. dist., scribed B.T. M. 1-8995.

1970 Forest Service Certified Corner Recordation by Stanley J. Skousen Reg No. 2532-S: No Physical evidence of original corner post or mound was found. A larch snag , 18 ins. diam., bears North, 25.9 ft. dist., scribed B.T.M. 1-8995. For Cor. No. 1. "Mascot Placer" MS 8995 Set a galvanized iron pipe, 2 ins. diam., 24 ins. in the ground, with brass cap mkd. as shown, set corner from original BT., from which:

A white pine, 9 ins. diam., bears S47°W, 10.5 ft. dist. mkd. RM.

A spruce, 10 ins. diam., bears N1°E, 7.7 ft. dist., mkd. RM.

Placed signs and paint on BT's and at corner.



II. Found 2 in. diam. iron pipe, 10 ins. above ground, firmly set with a 2 1/2 ins. diam., brass cap, mkd. as shown.

from which:

A spruce, 16 ins. diam., bears N4°E, 7.6 ft. dist., mkd with a pitched face.

A larch, 18 ins. diam., bears North, 25.9 ft. dist., mkd. with visible scribe marks.

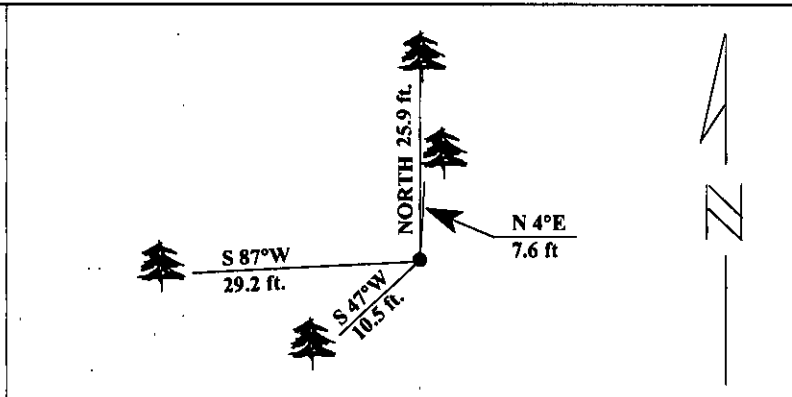
A pine, 11 ins. diam., bears S47°W, 10.5 ft. dist., mkd. RM.

III. Established one new bearing tree:

A larch, 11 ins. diam., bears S 87°W, 29.2 ft. dist., mkd. 1-8995 BT.

Painted red bands around the bearing trees and attached Land Survey Monument and Bearing Tree signs.

Magnetic Declination: 20° East.

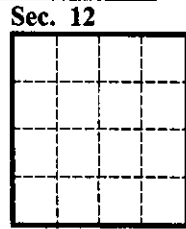


SKETCH OF CORNER

CERTIFICATION  
I, Thomas M. Hommel  
certify the information shown herein is true and correct.  
Signature Ground Party Chief  
I, Alvah F. Hughes  
certify that this Corner Record correctly represents work performed by me or under my direction in compliance with the "Corner Recordation Act" (76-22-101, et seq., M.C.A.)  
Signature of Surveyor & Seal  
Date: 1/12/96  
Reg. No.: 7322LS  
Employer U.S. FOREST SERVICE

Office of Clerk and Recorder, County of LINCOLN. This "corner record" was filed for record on JULY 25, 1997 was noted on the cross-index plat and is assigned page No. 9682 in book No. CORAL M. CUMMINGS By PLB

County Official



● - corner this sheet

Cross Index No Cor. 1 M.S. 8995 Mascot Lode T. 27N R. 31W PMM