

# CERTIFIED CORNER RECORDATION

**Corner MS 8995 COR. 4 Sec. 12 T. 27N R. 31W P.M., MT. Lincoln County**  
**MASCOT LODE**

I. 1909 Original Mineral Survey No. 8995 by Aurthur E. Lee et. al.: Cor. No. 4, Identical with Cor. No. 4, Mineral Survey No. 7431. A tamarack post 4 ft. long 4 ins. square, set 2 ft. in the ground with a mound of earth, scribed 4-8995, from which:

- A blazed tamarack, 22 ins. diam., bears West, 2.0 ft. dist., scribed B.T.M. 4-8995.
- A blazed tamarack, 15 ins. diam., bears S 40°E, 24.5 ft. dist., scribed B.T.M. 4-8995.

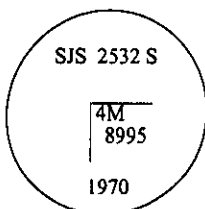
1970 Forest Service Certified Corner Recordation by Stanley J. Skousen Reg. No. 2532-S: Found original corner post firmly set, from which:

- A larch, 24 ins. diam., bears West, 2.0 ft. dist., scribed B.T. M. 4-8995.
- A larch snag, 17 ins. diam., bears S 21 1/2°E, 24.5 ft. dist., visible scribe.

For Cor. No. 4. "Mascot Placer" MS 8995 Set a galvanized iron pipe, 2 ins. diam., 24 ins. in the ground, with brass cap mkd. as shown, set corner in exact center point of original wooden post from which:

- A hemlock, 9 ins. diam., bears S 45 1/2°E, 4.11 ft. dist. mkd. RM.

Placed signs and paint on BT's and at corner.



II. Found 2 in. diam. iron pipe, 10 ins. above ground, firmly set with a 2 1/2 ins. diam., brass cap, mkd. as shown.

from which:

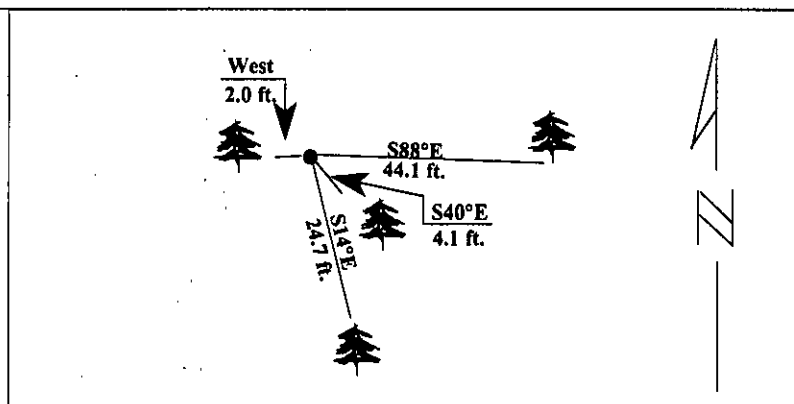
- A hemlock, 9 ins. diam., bears S 40°E, 4.1 ft. dist., mkd. RM. (Rec: S 45 1/2°E, 4.11 ft)
- A hemlock, 24 ins. diam., bears S 14°E, 24.7 ft. dist., visible scribe. (Orig. rec: larch, S 40°E,)
- A hemlock, 23 ins. diam., bears West, 2.0 ft. dist., visible scribe. (Rec: larch)

III. Established one new bearing tree:

- A hemlock, 17 ins. diam., bears S88°E, 44.1 ft. mkd. 4 8995 BT.

Painted red bands around the bearing trees and attached Land Survey Monument and Bearing Tree signs.

Magnetic Declination: 20° East.



**SKETCH OF CORNER**

CERTIFICATION

I. Thomas M. Hommel  
Certify the information shown herein is true and correct.  
*Thomas M. Hommel*  
 Signature Ground Party Chief

I. Alvah F. Hughes  
certify that this Corner Record correctly represents work performed by me or under my direction in compliance with the "Corner Recordation Act" (78/22 101, et seq., M.C.A.)  
*Alvah F. Hughes*  
 Signature of Surveyor & Seal

Date: 1/12/96

Reg. No.: 7322LS

Employer U.S. FOREST SERVICE

Office of Clerk and Recorder, County of LINCOLN. This "corner record" was filed for record on JULY 25, 1997 was noted on the cross-index plat and is assigned page No. 9681 in book No. \_\_\_\_\_ CORAL M. CUMMINGS County Official

Sec. 12


● - corner this sheet