

# CERTIFIED CORNER RECORDATION

Corner MS 8995 COR. 4 S. 2 T. 27N R. 31W P.M., MT. Lincoln County  
Y. J. #2 LODE

I. 1909 Original Mineral Survey No. 8995 by Aurthur B. Lee et. al: Cor. No. 4, identical with Cor. No 6 of Mineral Survey No. 7431. A blazed tamtrack post 4 ft. long 4 ins. square, set 2 ft. in the ground, with a mound of earth, scribed Y.J. No. 2, 4-8995, from which:

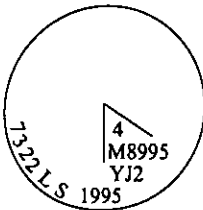
A blazed fir, 10 ins diam., bears East, 18.8 ft. dist., scribed B.T.Y.J. No.2 4-8995.  
A blazed tamarack, 14 ins. diam., bears S85°W, 17.9 ft. dist., scribed B.T.Y.J. No. 2 4-8995.

II. Found:

Rotten remains of a fir stump, bears N82°E, 18.8 ft. dist., no visible mks. (rec. East bearing).  
A larch, 24 ins. diam., bears S67°W, 17.9 ft. dist., YJ 4 89 visible, (rec. S85°W).

No evidence of original corner post.

III. I reestablished the corner by distance- distance intersection from the remains of the original bearing trees. Set a 2 1/2 in. diam., 30 ins. long alum. pipe, 24 ins. in the ground, with a 3 1/4 in. diam. alum cap mkd. as shown.

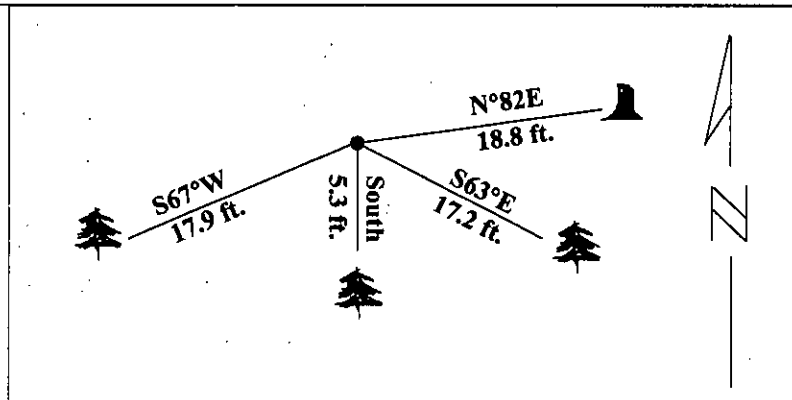


Established two new bearing trees:

A cedar, 14 ins. diam., bears S 63°E, 17.2 ft. dist., mkd. 4-8995 BT  
A hemlock, 11 ins. diam., bears South, 5.3 ft. dist., mkd. 4-8995 BT.

Painted red bands around the bearing trees and attached Land Survey Monument and Bearing Tree signs.

Magnetic Declination: 20° East.



SKETCH OF CORNER

CERTIFICATION

I, Thomas M. Hommel  
certify the information shown herein is true and correct.

Signature Ground Party Chief

I, Alvah F. Hughes  
certify that this Corner Record correctly represents work performed by me or under my direction in compliance with the "Corner Recordation Act" (70-22-101, et seq., M.C.A.)

Signature of Surveyor & Seal

Date: 1/15/96

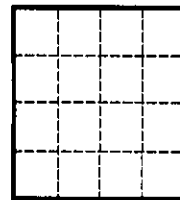
Reg. No.: 7322LS

Employer U.S. FOREST SERVICE

Office of Clerk and Recorder, County of LINCOLN. This "corner record" was filed for record on JULY 25, 1997 was noted on the cross-index plat and is assigned page No. 9680 in book No. CORAL M. CUMMINGS By DRB

County Official

Sec. 2



• - corner this sheet