

CERTIFIED CORNER RECORDATION

Corner **MS 6399 COR. 3** Sec. **11** T. **27N** R. **31W** P.M., MT. **Lincoln** County
MS 7431 COR. 9

I. 1901 Original Mineral Survey No. 6399 by Nimrod E. Jenkins: Cor. No. 3. Set a post 4 ft. long 4 ins. square, 2 ft. in the ground, scribed 3-6399, from which:

A blazed cedar, 12 ins. diam., bears N 41°30'W, 3.0 ft. dist., scribed 3-6399 B.T.

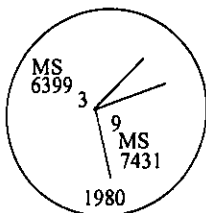
A blazed pine, 12 ins. diam., bears S 35°W, 12.0 ft. dist., scribed 3-6399 B.T.

1905 Original Mineral Survey No. 7431 by Nimrod E. Jenkins: Cor. No. 9, identical with Cor. No. 3 of Mineral Survey No. 6399. Scribed it 9-7431 on S.E. face, for Cor. No. 9.

1905 Original Mineral Survey No. 7683 by Nimrod E. Jenkins: Cor. No. 3, identical with Cor. No. 9 Sur. No. 7431 and Cor. No 3 Sur. No. 6399. Scribed it 3-7683.

1980 Certified Corner Recordation by Melvin D. Lauteren Reg. No. 4232-S: Verifies original records. Set an aluminum pipe 2 1/2 ins. diam., x 30 ins. long, 20 ins. in the ground, with a mound of stone, with cap mkd. as shown for exact corner position, from which:

A cedar, 17 ins. diam., bears N 41°30'W, 3.0 ft. dist., mkd. 3-6399 B T. (Original bearing tree. No new accessories available).



II. Found a 2 1/2 ins. diam. alum. pipe with 3 1/4 ins. diam. alum., cap 10 ins. above ground, mkd. as shown above from which:

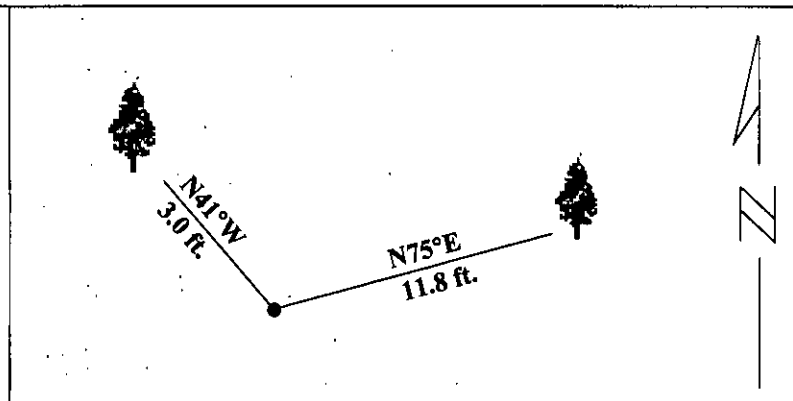
A cedar, 18 ins. diam., bears N 41°W, 3.0 ft. dist., visible scribe 3-6399.

III. Established one new bearing tree:

A larch, 8 ins. diam., bears N 75°E, 11.8 ft. dist., mkd. 3-6399.

Painted red bands around the bearing trees and attached Land Survey Monument and Bearing Tree signs.

Magnetic Declination: 20° East.

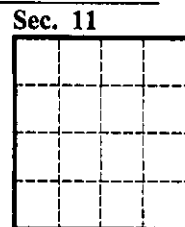


SKETCH OF CORNER

CERTIFICATION	
I. <u>Mark Federman</u>	certify the information shown herein is true and correct.
<i>Mark Federman</i>	
Signature Ground Party Chief	
I. <u>Alvah F. Hughes</u>	certify that this Corner Record correctly represents work performed by me or under my direction in compliance with the "Corner Recordation Act" (70/22-101, et seq., M.C.A.)
<i>Alvah F. Hughes</i>	
Signature of Surveyor & Seal	
Date: <u>1/23/96</u>	
Reg. No.: <u>7322LS</u>	
Employer: <u>U.S. FOREST SERVICE</u>	

Office of Clerk and Recorder, County of LINCOLN. This "corner record" was filed for record on JULY 25, 1997 was noted on the cross-index plat and is assigned page No. 9679 in book No. CORAL M. CUMMINGS By *RLB*

County Official



• - corner this sheet

Cross Index No Cor. 3 M.S. 6399 & 9 M.S. 7431 T. 27N R. 31W PMM