

CERTIFIED CORNER RECORDATION

Corner MS 7431 COR. 10 Sec. 12 T. 27N R. 31W P.M., MT. Lincoln County
MS 7683 COR. 2

I. 1905 Original Mineral Survey No. 7431 by Nimrod E. Jenkins: Cor. No. 10. Set a post 4 ft. long, 4 ins. square, 2 ft. in the ground, scribed 10-7431, from which:

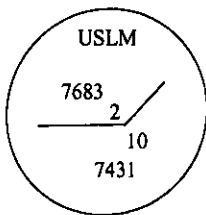
- A blazed pine, 16 ins. diam., bears S 38°E, 6.2 ft. dist., scribed 10-7431 B.T.
- A blazed pine, 12 ins. diam., bears N 10°E, 12.0 ft. dist., scribed 10-7431 B.T.

1905 Original Mineral Survey No. 7683 by Nimrod E. Jenkins: Cor. No. 2, identical with Cor. No. 10 Sur. No. 7431. Scribed it 2-7683.

1980 Certified Corner Recordation by Melvin D. Lauteren Reg. No. 4232-S: Varifies original records. Set an aluminum pipe 2 1/2 ins. diam., 30 ins. long, 26 ins. in the ground, with cap mkd. as shown for exact corner position. :

From which:

- A blazed pine, 32 ins. diam., bears S 38°E, 6.2 ft. dist., mkd. 9-7431 B T. (Original bearing tree mkd. incorrectly, no new accessories available).



II. Found a 2 1/2 in. diam. alum. pipe with 3 1/4 in. diam. alum. cap, 8 ins. above ground, mkd. as shown above

From which:

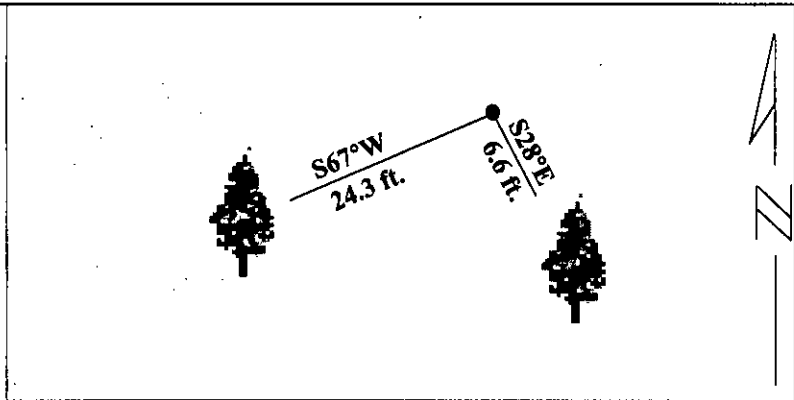
- A pine, 34 ins. diam., bears S28°E, 6.6 ft. dist., visible scribe 9-7431, mismarked (rec. S38°E, 6.2 ft. dist.).

III. Established one new bearing tree:

- A hemlock, 12 ins. diam., bears S67°E, 24.3 ft. dist., mkd. 2-7683 BT.

Painted red bands around the bearing trees and attached Land Survey Monument and Bearing Tree signs.

Magnetic Declination: 20° East.



SKETCH OF CORNER

CERTIFICATION

I, Rex O. Rice
certify the information shown herein is true and correct.

Rex O. Rice
Signature Ground Party Chief

I, Alvah F. Hughes
certify that this Corner Record correctly represents work performed by me or under my direction in compliance with the "Corner Recordation Act" 70-22-101, et seq., M.C.A.

Alvah F. Hughes
Signature of Surveyor & Seal

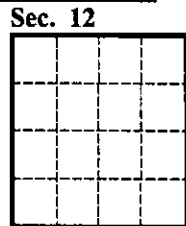
Date: 1/24/96

Reg. No.: 7322LS

Employer U.S. FOREST SERVICE

Office of Clerk and Recorder, County of LINCOLN. This "corner record" was filed for record on JULY 25, 1997 was noted on the cross-index plat and is assigned page No. 9678 in book No. CORAL M. CUMMINGS

County Official By DDB



• - corner this sheet