

CERTIFIED CORNER RECORDATION

Corner **MS 8995 COR. 3** Sec. 2 T. 27N R. 31W P.M., MT. Lincoln County
Y. J. #2 LODE

I. 1909 Original Mineral Survey No. 8995 by Aurthur B. Lee et al.: Cor. No. 3. A tamarack post 4 ft. long, 4 ins. square, 2 ft. in the ground with a mound of earth, scribed 3-8995, from which:

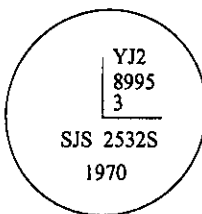
A blazed tamarack, 10 ins. diam., bears S 45°E, 3.8 ft. dist., scribed B.T. Y.J. No. 2, 3-8995.

1970 U.S.F.S. Certified Corner Recordation by Stanley J. Skousen Reg No. 2532-S: For Cor. No. 3. "Yellow Jacket No. 2 Placer" MS 8995, set a galvanized iron pipe, 2 ins. diam., 24 ins. in the ground, with brass cap mkd. as shown. Set corner from original BT, from which:

A cedar, 14 ins. diam., bears S 14° W, 34.2 ft. dist. mkd. RM.

Placed signs and paint on BT and at corner.

II. Found 2 1/2 in. diam. iron pipe, 10 ins. above ground, firmly set, with a brass cap, mkd. as shown:



from which:

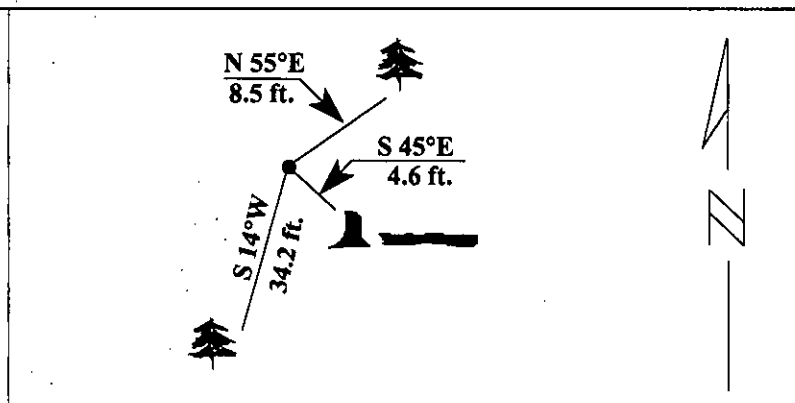
A larch stump, with a log alongside, bears S 45°E, 4.6 ft. dist., mkd. BTYJ No.2 3-8995 (Rec: 3.8 ft.)
 A cedar, 15 ins. diam., bears S 14°W, 34.2 ft. dist., mkd. RM.

III. Established one new bearing tree:

A Hemlock, 6 ins. diam., bears N 55°E, mkd. X BT.

Painted red bands around the bearing trees and attached Land Survey Monument and Bearing Tree signs.

Magnetic Declination: 20° East.



SKETCH OF CORNER

CERTIFICATION	
I. <u>Thomas M. Hommel</u>	certify the information shown herein is true and correct.
<i>Thomas M. Hommel</i>	
Signature Ground Party Chief	
I. <u>Alvah F. Hughes</u>	certify that this Corner Record correctly represents work performed by me or under my direction in compliance with the "Corner Recordation Act" (70-22-101, et seq., M.C.A.)
<i>Alvah F. Hughes</i>	
Signature of Surveyor & Seal	
Date: <u>1/11/96</u>	7322LS
Reg. No.: <u>7322LS</u>	
Employer <u>U.S. FOREST SERVICE</u>	

Office of Clerk and Recorder, County of LINCOLN. This "corner record" was filed for record on JULY 25, 1997 was noted on the cross-index plat and is assigned page No. 9677 in book No. _____

CORAL M. CUMMINGS
 County Official *[Signature]*

Sec. 2

● - corner this sheet