

# CERTIFIED CORNER RECORDATION

Corner **MS 7683 COR. 5** Sec. **2** T. **27N** R. **31W** P.M., MT. **Lincoln** County  
**MS 7685 COR. 2**

I. 1905 Original Mineral Survey No. 7683 by Nimrod E. Jenkins: Cor. No. 5. Set a post 4 ft. long, 4 ins. square, 2 ft. in the ground scribed 5-7683, from which:

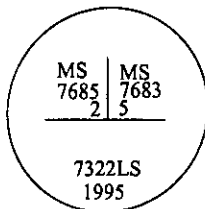
- A blazed pine, 12 ins. diam., bears N 11°E, 12.0 ft. dist., scribed 5-7683 B.T.
- A blazed pine, 10 ins. diam., bears N 73°W, 22.0 ft. dist., scribed 5-7683 B.T.

1905 Original Mineral Survey No. 7685 by Nimrod E. Jenkins: Cor. No. 2, identical with Cor. No. 5 of Mineral Survey No. 7683. A tamarack post 4 ft. long, 4 ins. sq., 2 ft. in the ground with a mound of earth, scribed 2-7685.

II. Found the remains of one of the original bearing trees and a 4 X 4 in. hole, 12 ins. deep, with a small rock collar.

A rotten stump, bears N 11°E, 12.0 ft. dist., no visible scribe.

III. I reestablished the corner in the exact location of the original post hole and record the bearing and dist. to the remains of the original bearing tree. Set a 2 1/2 in. diam., 30 in. long alum. pipe, with a 3 1/4 in. diam. alum. cap mkd. as shown.

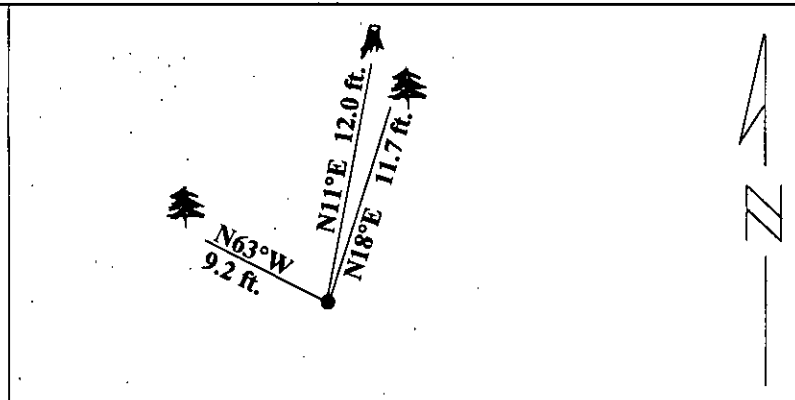


Established two new bearing trees:

- A fir, 11 ins. diam., bears N 18°E, 11.7 ft. dist., mkd. 5-7683 B T.
- A fir, 7 ins. diam., bears N 63°W, 9.2 ft. dist., mkd. 5-7683 B T.

Painted red bands around the bearing trees and attached Land Survey Monument and Bearing Tree signs.

Magnetic Declination: 20° East.



SKETCH OF CORNER

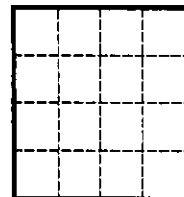
CERTIFICATION	
I. <u>Mark Federman</u>	certify the information shown herein is true and correct.
<u>Mark Federman</u>	
Signature Ground Party Chief	
I. <u>Alvah F. Hughes</u>	certify that this Corner Record correctly represents work performed by me or under my direction in compliance with the "Corner Recordation Act" (70-22-101, et seq., M.C.A.)
<u>Alvah F. Hughes</u>	
Signature of Surveyor & Seal	
Date: <u>1/21/96</u>	
Reg. No.: <u>7322LS</u>	
Employer <u>U.S. FOREST SERVICE</u>	

Office of Clerk and Recorder, County of LINCOLN. This "corner record" was filed for record on JULY 25, 1997 was noted on the cross-index plat and is assigned page No. 9676 in book No. \_\_\_\_\_

CORAL M. CUMMINGS  
County Official

By DLB

Sec. 1



• - corner this sheet