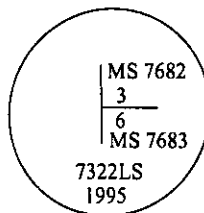


CERTIFIED CORNER RECORDATION

Corner M.S. 7682 COR. 3 Sec. 2 T. 27N R. 31W P.M., MT. Lincoln County
M.S. 7683 COR. 6

- I. 1905 Original Mineral Survey No. 7682 by Nimrod E. Jenkins: Cor. No. 3. Set a post 4 ft. long, 4 ins. square, 2 ft. in the ground, scribed 3-7682, from which:
- A blazed pine, 12 ins. diam., bears S 6°30'W, 7.2 ft. dist., scribed 3-7682 B.T.
A blazed pine, 12 ins. diam., bears N 14°30'W, 9.7 ft. dist., scribed 3-7682 B.T.
- 1905 Original Mineral Survey No. 7683 by Nimrod E. Jenkins: The N.W. loc. cor., which is identical with Cor. No. 3 of Mineral Survey No. 7682. I scribed it 6-7683 for Cor. No. 6 of this survey.
- II. No evidence of original corner post or bearing trees as the corner position fall in a clearcut.
- III. At the corner position determined by survey, set a 2 1/2 in. diam., 30 ins. long aluminum pipe, 24 ins. in the ground, with a 3 1/4 in. diam. aluminum cap marked as shown.

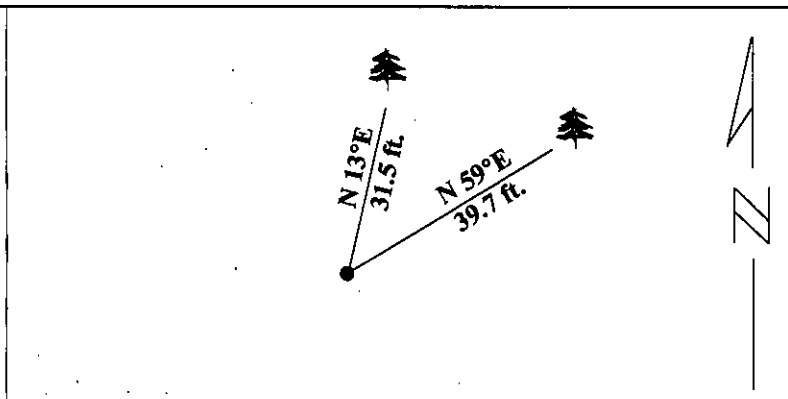


Established two new bearing trees:

- A pine, 9 ins. diam., bears N 13°E, 31.5 ft. dist., mkd. 3-7682 BT.
A fir, 19 ins. diam., bears N 59°E, 39.7 ft. dist., mkd. 6-7683 BT.

Painted red bands around the bearing trees and attached Land Survey Monument and Bearing Tree signs.

Magnetic Declination: 20° East.



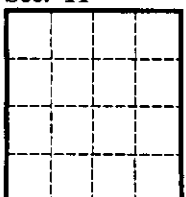
SKETCH OF CORNER

CERTIFICATION	
I, <u>Mark Federman</u>	certify the information shown herein is true and correct.
<i>Mark Federman</i>	
Signature Ground Party Chief	
I, <u>Alvah F. Hughes</u>	certify that this Corner Record correctly represents work performed by me or under my direction in compliance with the "Corner Recordation Act" (70-22-101, et seq., M.C.A.)
<i>Alvah F. Hughes</i>	
Signature of Surveyor & Seal	
Date: <u>1/21/96</u>	
Reg. No.: <u>7322LS</u>	
Employer: <u>U.S. FOREST SERVICE</u>	

Office of Clerk and Recorder, County of LINCOLN. This "corner record" was filed for record on JULY 25, 1997 was noted on the cross-index plat and is assigned page No. 9675 in book No. _____

CORAL M. CUMMINGS
County Official

Sec. 11



• - corner this sheet

Cross Index No Cor. 4 M.S. 7683 & 1 M.S. 7684 T. 27N R. 31W PMM