

CERTIFIED CORNER RECORDATION

Corner MS 7683 COR. 4 Sec. 11 T. 27N R. 31W P.M., MT. Lincoln County
MS 7684 COR. 1

I. 1905 Original Mineral Survey No. 7683 by Nimrod E. Jenkins: Cor. No. 4. Set a post 4 ft. long 4 ins. square, set 2 ft. in the ground scribed 4-7683, from which:

A blazed pine, 16 ins. diam., bears S 37°W, 21.0 ft. dist., scribed 4-7683 B.T.
A blazed tamarack, 12 ins. diam., bears N 75°E, 10.0 ft. dist., scribed 4-7683 B.T.

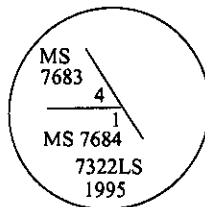
1905 Original Mineral Survey by Nimrod E. Jenkins: Cor. No. 1, identical with the N.E. Loc. Cor. and Cor. No. of 4 of Mineral survey No. 7683. Scribed 1-7684.

II. Found:

A down rotten tree, bears S37°W, 10.0 ft. dist no visible scribe.

No evidence of the original corner post was found.

III. I reestablished corner No. 4 from corner No. 3 of Mineral Survey No. 6399, by using the record bearing and distance (Bearing S31°E, 20.5 ft. dist.) Set a 2 1/2 ins. diam., 30 ins. long alum. pipe, with a 3 1/4 ins. diam., alum. cap mkd. as shown.

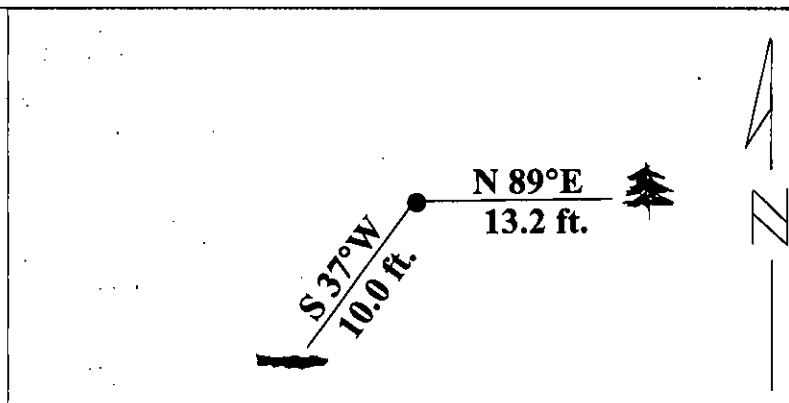


Established one new bearing tree:

A larch, 7 ins. diam., bears N89°E, 13.2 ft. dist., mkd. 4-7683 B T.

Painted red bands around the bearing trees and attached Land Survey Monument and Bearing Tree signs.

Magnetic Declination: 20° East.



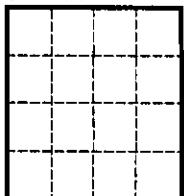
SKETCH OF CORNER

CERTIFICATION	
I, <u>Mark Federman</u>	certify the information shown herein is true and correct.
	Signature Ground Party Chief
I, <u>Alvah F. Hughes</u>	
certify that this Corner Record correctly represents work performed by me or under my direction in compliance with the "Corner Recordation Act" (70-22-101, et seq., M.C.A.)	
	Signature of Surveyor & Seal
Date: <u>1/21/96</u>	
Reg. No.: <u>7322LS</u>	
Employer: <u>U.S. FOREST SERVICE</u>	

Office of Clerk and Recorder, County of LINCOLN. This "corner record" was filed for record on JULY 25, 1997 was noted on the cross-index plat and is assigned page No. 9674 in book No.

CORAL M. CUMMINGS
County Official

Sec. 11



• - corner this sheet

Cross Index No Cor. 4 M.S. 7683 & 1 M.S. 7684 T. 27N R. 31W PMM