

CERTIFIED CORNER RECORDATION

Corner **MS 7682 COR. 4** Sec. **2** T. **27N** R. **31W** P.M., MT. **Lincoln** County
MS 8993 COR. 3

I. 1905 Original Mineral Survey No. 7682 by Nimrod E. Jenkins: Cor. No. 4. Set a post 4 ft. long, 4 ins. square, 2 ft. in the ground, scribed 4-7682, from which:

- A blazed pine, 8 ins. diam., bears S 57°E, 6.0 ft. dist., scribed 4-7682 B.T.
- A blazed pine, 12 ins. diam., bears N 75°W, 17.8 ft. dist., scribed 4-7682 B.T.

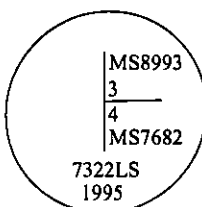
1909 Original Mineral Survey No. 8993 by Arthur B. Lee et al: Cor. No. 3, identical with S.W. Loc. Cor. and Cor. No. 4 of Mineral Sur. No. 7682, a tamarack post 4 ft. long, 4 ins. sq., 2 ft. in the ground with a mound of earth, scribed 3-8993.

- A blazed pine, 12 ins. diam., bears S 70°E, 5.6 ft. dist., scribed B.T. 3-8993.
- A blazed tamarack, 10 ins. diam., bears N 50°W, 20.0 ft. dist., scribed B.T. 3-8993.

II. Found the remains of 3 of the original bearing trees, however no evidence of the original corner post was found.

- A pine, 21 ins. diam., bears S 38°E, 5.0 ft. dist., visible scribe (rec. S 57°E, 6.0 ft. dist.).
- A down dead pine, 15 ins. diam., bears N 80°W, 17.8 ft. dist., mkd. 4-7682 B.T. (rec. N 75°W).
- A dead larch, 10 ins. diam., bears N 32°W, 20.0 ft. dist., (rec. N 50°W).

III. I reestablished the corner by distance-distance intersection from the remains of the original bearing trees. Set a 2 1/2 in. diam., 30 in. long alum. pipe, flush with large rock collar, with a 3 1/4 in. diam. alum. cap mkd. as shown.

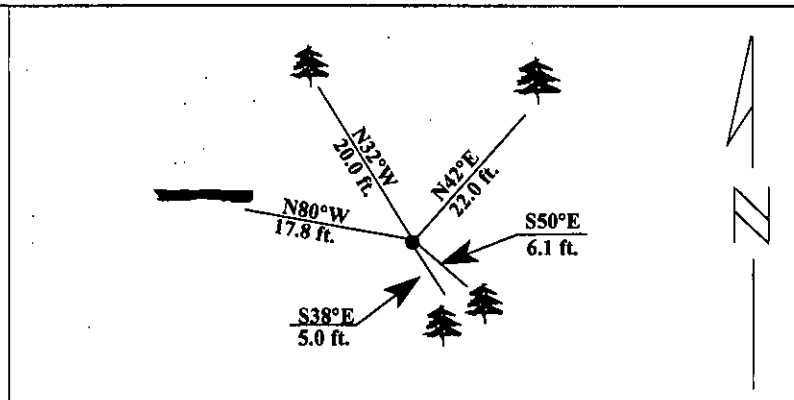


Established two new bearing trees:

- A fir, 15 ins. diam., bears N 42°E, 22.0 ft. dist., mkd. 3-8993 B T.
- A fir, 9 ins. diam., bears S 50°E, 6.1 ft. dist., mkd. 4-7682 B T.

Painted red bands around the bearing trees and attached Land Survey Monument and Bearing Tree signs.

Magnetic Declination: 20° East.



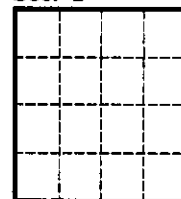
SKETCH OF CORNER

CERTIFICATION	
I, <u>Mark Federman</u>	certify the information shown herein is true and correct.
Signature Ground Party Chief	
I, <u>Alvah F. Hughes</u>	
certify that this Corner Record correctly represents work performed by me or under my direction in compliance with the "Corner Recordation Act" (70-22-101, et seq., M.C.A.)	
Signature of Surveyor & Seal	
Date: <u>1/21/96</u>	
Reg. No.: <u>7322LS</u>	
Employer <u>U.S. FOREST SERVICE</u>	

Office of Clerk and Recorder, County of LINCOLN. This "corner record" was filed for record on JULY 25, 1997 was noted on the cross-index plat and is assigned page No. 9673 in book No. CORAL M. CUMMINGS BLB

County Official

Sec. 2



• - corner this sheet

Cross Index No Cor. 4 M.S. 7682 & 3 M.S. 8993 T. 27N R. 31W PMM