

CERTIFIED CORNER RECORDATION

Corner W.C. # 1 Sec. 12 T. 27N R. 31W P.M., MT. Lincoln County
MS 7682 COR. 2

I. 1905 Original Mineral Survey No. 7431 by Nimrod E. Jenkins: Cor. No. 11. Set a post 4 ft. long, 4 ins. square, 2 ft. in the ground, scribed 11-7431, for Cor. No. 11. Raised a mound of earth and stone around post.

1905 Original Mineral Survey No. 7437 by Nimrod E. Jenkins: Cor. No. 3, identical with Cor. No. 11 of Mineral Survey No. 7431, scribed it 3-7437 on N.E. face, for Cor. No. 3 of this survey.

1905 Original Mineral Survey No. 7682 by Nimrod E. Jenkins: Cor. No. 2, identical with the S.E. Loc. Cor. and Cor. No. 3 of Mineral Survey No. 7437 and Cor. No. 11 Sur. No. 7431, a tamarack post 4 ft. long, 4 ins. sq., 2 ft. in the ground with a mound of earth, scribed 2-7682.

A blazed spruce, 20 ins. diam., bears N 70°W, 10.0 ft. dist., scribed B.T. 2-7682.

A blazed balsam, 14 ins. diam., bears N 22°30'E, 37.5 ft. dist., scribed B.T. 2-7682.

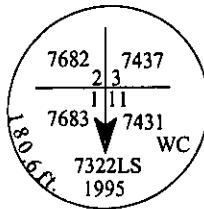
1905 Original Mineral Survey No. 7683 by Nimrod E. Jenkins: Cor. No. 1, identical with Cor. No. 2 of Mineral Survey No. 7682, Cor. No. 3 of Mineral Survey No. 7437, and Cor. No. 11 of Mineral Survey No. 7431. Scribed it 1-7683.

II. Found:

A stump, 20 ins. diam., bears N70°W, 10.0 ft. dist from original corner position, visible scribe.

The corner position falls in a pond.

III. As determined by survey, set a witness corner on line, North, 180.6 ft. dist. from the original position for the corner. Set a 1/2 in. diam., 30 in. long alum. pipe, 21 ins. in the ground, with a 3 1/4 in. diam. alum. cap mkd. as shown.



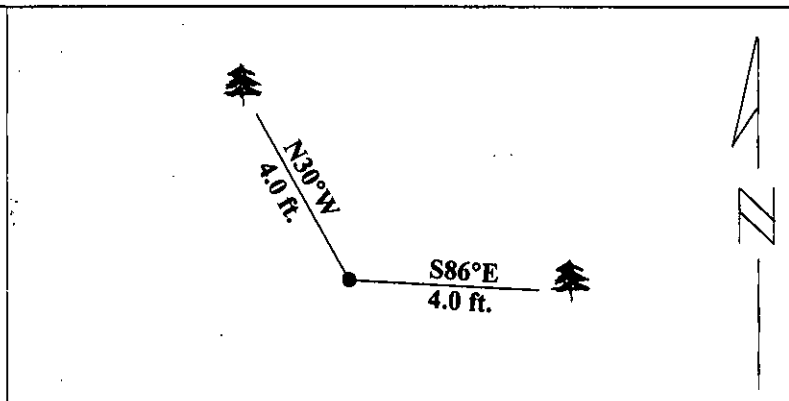
Established two new bearing trees:

A fir, 7 ins. diam., bears S 86°E, 4.0 ft. dist., mkd. 3-7437 B T.

A spruce, 9 ins. diam., bears N 30°W, 4.0 ft. dist., mkd. 2-7682 B T.

Painted red bands around the bearing trees and attached Land Survey Monument and Bearing Tree signs.

Magnetic Declination: 20° East.

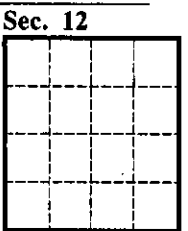


SKETCH OF CORNER

CERTIFICATION	
I. <u>Mark Federman</u>	certify the information shown herein is true and correct.
Signature Ground Party Chief	
I. <u>Alvah F. Hughes</u>	
certify that this Corner Record correctly represents work performed by me or under my direction in compliance with the "Corner Recordation Act" (70-22-101, et seq., M.C.A.)	
Signature of Surveyor's Seal	
Date:	<u>1/23/96</u>
Reg. No.:	<u>7322LS</u>
Employer	<u>U.S. FOREST SERVICE</u>

Office of Clerk and Recorder, County of LINCOLN. This "corner record" was filed for record on JULY 25, 1997 was noted on the cross-index plat and is assigned page No. 9671 in book No. CORAL M. CUMMINGS By DLB

County Official



Cross Index No

W. Cor. #1 M.S. 7682-2

T. 27N

R.

31W

PMM