

CERTIFIED CORNER RECORDATION

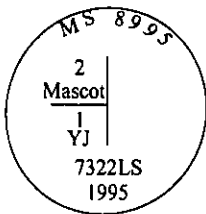
Corner MS 8995 COR. 1 Sec. 12 T. 27N R. 31W P.M., MT. Lincoln County
Y.J. LODE

I. 1909 Original Mineral Survey No. 8995 by Aurthur E. Lee et al: Cor. No. 1, identical with Cor. No. 2 Mascot Placer of this survey, a tamarack post 4 ft. long, 4 ins. sq., 2 ft. in the ground with mound of stone, scribed M.2-Y.J. 1-8995.

No bearing trees available.

II. No evidence found.

III. At the position determined by survey, set a 2 1/2 in. diam. alum. pipe, 30 ins. long, 26 ins. in the ground with a 3 1/4 in. diam. alum. cap mkd. as shown:



from which:

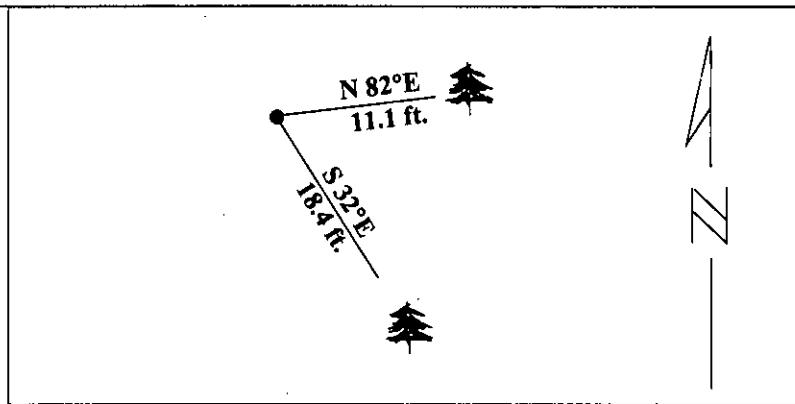
A fir, 8 ins. diam., bears N 82°E, 11.1 ft. dist., mkd. "1 YJ 8995 BT".

A fir, 8 ins. diam., bears S 32°E, 18.4 ft. dist., mkd. "1 YJ 8995 BT".

Painted red bands around the bearing trees and attached Land Survey Monument and Bearing Tree signs.

Set a 6 ft. galvanized steel guard post with Land Survey Marker and Property Boundry decals South 4.0 ft. dist. from corner.

Magnetic Declination: 20° East.



SKETCH OF CORNER

CERTIFICATION

I, Thomas M. Hommel
certify the information shown herein is true and correct.
Thomas M. Hommel
Signature Ground Party Chief

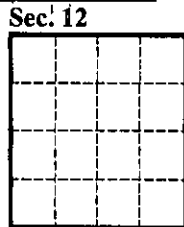
I, Alvah F. Hughes
certify that this Corner Record correctly represents work performed by me or under my direction in compliance with the "Corner Recordation Act" (70-22-101, et seq., M.C.A.)
Alvah F. Hughes
Signature of Surveyor & Seal

Date: 1/17/96

Reg. No.: 7322LS

Employer U.S. FOREST SERVICE

Office of Clerk and Recorder, County of LINCOLN. This "corner record" was filed for record on JULY 25, 1997 was noted on the cross-index plat and is assigned page No. 9670 in book No. CORAL M. CUMMINGS By DLB
County Official



• - corner this sheet