

**INSTRUCTIONS**

1. Original and/or subsequent record used to evaluate the corner position.
2. Description of evidence found, note discrepancies in the record, state method of establishing lost or obliterated corners.
3. Description of monument and accessories set to perpetuate the corner position.
4. Sketch of corner, show all pertinent data which can best be shown in a sketch example, corner marking, topography ties, position of accessories, etc.
5. Certification must be signed and sealed by Land Surveyor registered in the State of Montana.
6. Fill in Cross Index & Section Diagram at bottom of sheet.

**CERTIFIED CORNER RECORDATION**

Corner No. 2, JOHNSTONE PLACER T. 27 N. R. 31 W. P.M.M. Lincoln County  
 M.S. No. 8797 unsurveyed

Record No. 1 Mineral Survey No. 8797, by Arthur B. Young, March 1908  
 Set a quartzite stone, 24 x 11 x 8 ins., 12 ins. deep,  
 chiseled 2-8797, raised mound earth alongside.  
 Blazed Fir 20" dia., scribed BT 2-8797, bears S.67 30'E. 31 ft.  
 Blazed Fir 10" dia., scribed BT 2-8797, bears S.77 30'E. 28 ft.

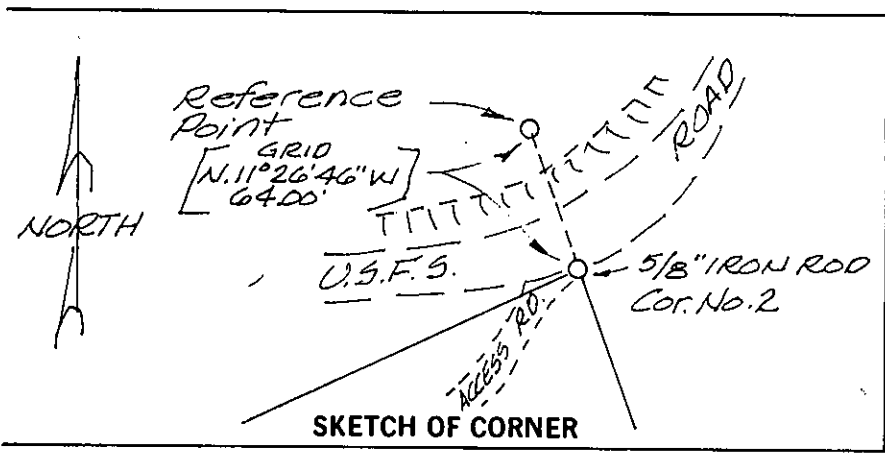
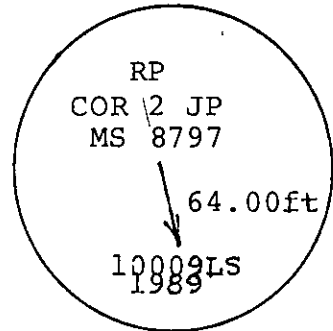
Found Searched for evidence of original corner monument stone and bearing trees without recovery. Believed to have been destroyed by Forest Service road construction several years ago.

Set A position for this corner was determined by a Grant Boundary solution between the found corners of No. 1 and No. 3 of the JOHNSTONE PLACER, and monumented as follows:

At corner No. 2 position I set a 5/8" diam. iron rod, 30" long flush with the road grade and at southerly edge of road. This monument is subject to being disturbed by road construction and road maintenance.

I set a 2 1/4" diam. alum. pipe, 30" long, 24" in the ground, with rock collar, and with 3 1/4" diam. alum. cap, at a point North 11°26'46" West 64.00 feet, which is a projection north-westerly of the east line (Line 2-3) of the JOHNSTONE PLACER, from corner No. 2 thereof.

The alum. cap is stamped as follows



**CERTIFICATION**

I, Richard C. Skinner  
 certify the information shown herein is true and correct.  
*Richard C. Skinner*  
 Signature Ground Party

I, Robert A. Brown  
 certify that this Corner Record correctly represents work performed by me or under my direction in compliance with the "Corner Recordation Act" (70-22-101, et seq., M.C.A.)  
*Robert A. Brown*  
 Signature of Surveyor & Seal

Date: 2/6/90 Reg. No. 10009LS  
 Employer: Skinner & Associates

Office of Clerk and Recorder, County of Lincoln. This "corner record" was filed for record on Feb 28, 1990 was noted on the cross-index plat and is assigned page No. 4229, in book No. \_\_\_\_\_  
*Grant BT Signed by Bill Buckhoff*  
 County Official

Sec.


Cross Index No. \_\_\_\_\_ T. \_\_\_\_\_ R. \_\_\_\_\_ PMM      • - corner this sheet