

INSTRUCTIONS

1. Original and/or subsequent record used to evaluate the corner position.
2. Description of evidence found, note discrepancies in the record, state method of establishing lost or obliterated corners.
3. Description of monument and accessories set to perpetuate the corner position.
4. Sketch of corner, show all pertinent data which can best be shown in a sketch example, corner marking, topography ties, position of accessories, etc.
5. Certification must be signed and sealed by Land Surveyor registered in the State of Montana.
6. Fill in Cross Index & Section Diagram at bottom of sheet.

CERTIFIED CORNER RECORDATION

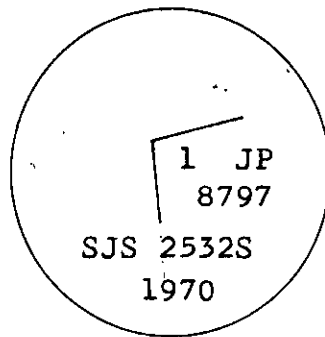
Corner No. 1 JOHNSTONE PLACER T. 27 N. R. 31 W. P.M.M. Lincoln County
 M.S. No. 8797 unsurveyed

Record No. 1 Mineral Survey No. 8797, by Arthur B. Young, March 1, 1908
 Set a quartzite stone 24 x 8 x 6 ins., 12 ins. deep,
 chiseled 1-8797, raised mound of earth and stone alongside.
 Blazed Cedar 20" dia., scribed BT 1-8797, bears N.35°E. 8.1 ft.
 Blazed Fir 24" dia., scribed BT 1-8797, bears S.29°15'E. 21.1 ft.

Record No. 2 Certified Land Corner Recordation, by Stanley J. Skousen,
 Surveyor and A. R. Trenkle, Party Chief, Nov. 1970, filed
 April 20, 1971.
 Found original stone firmly set and marked, with a mound of
 earth and stone alongside.
 Found Cedar 24", bears N.35°E. 8.1 ft, alive with scribing
 visible on partly healed blaze.
 Found Larch 26", bears S.29°15'E. 21.1 ft, alive and healed blaze.

Set 2" galv. iron pipe, 20" in ground at exact center of original
 stone, with brass cap, raised a collar of stone 2' base, 1' high
 around the iron pipe and buried original stone alongside.

Brass cap stamped as shown:



Found Found corner as monumented and restored and report by
 Skousen, April 1971 recordation (Record No. 2)

Set Because of nearby mining activities, we made reference point
 ties as shown on the reverse side of this certification.

Field work performed September 28, 1989

<p align="center">SKETCH OF CORNER</p>	<p align="center">CERTIFICATION</p> <p>I, <u>Richard C. Skinner</u> certify the information shown herein is true and correct. <i>Richard C. Skinner</i> Signature Grouped Party Chief</p> <p>I, <u>Robert A. Brown</u> certify that this Corner Record correctly represents work performed by me or under my direction in compliance with the "Corner Recordation Act" (70-22-101, et seq.) M.C.A., ROBERT A. <i>Robert A. Brown</i> Signature of Surveyor & Seal 0009 LS</p> <p>Date: <u>2/6/90</u> Reg. No. <u>0009LS</u> Employer: <u>Skinner & Associates</u> REGISTERED SURVEYOR</p>
---	---

Office of Clerk and Recorder, County of Lincoln . This "corner

record" was filed for record on Feb 20, 1990

was noted on the cross-index plat and is assigned page No. 4226 in

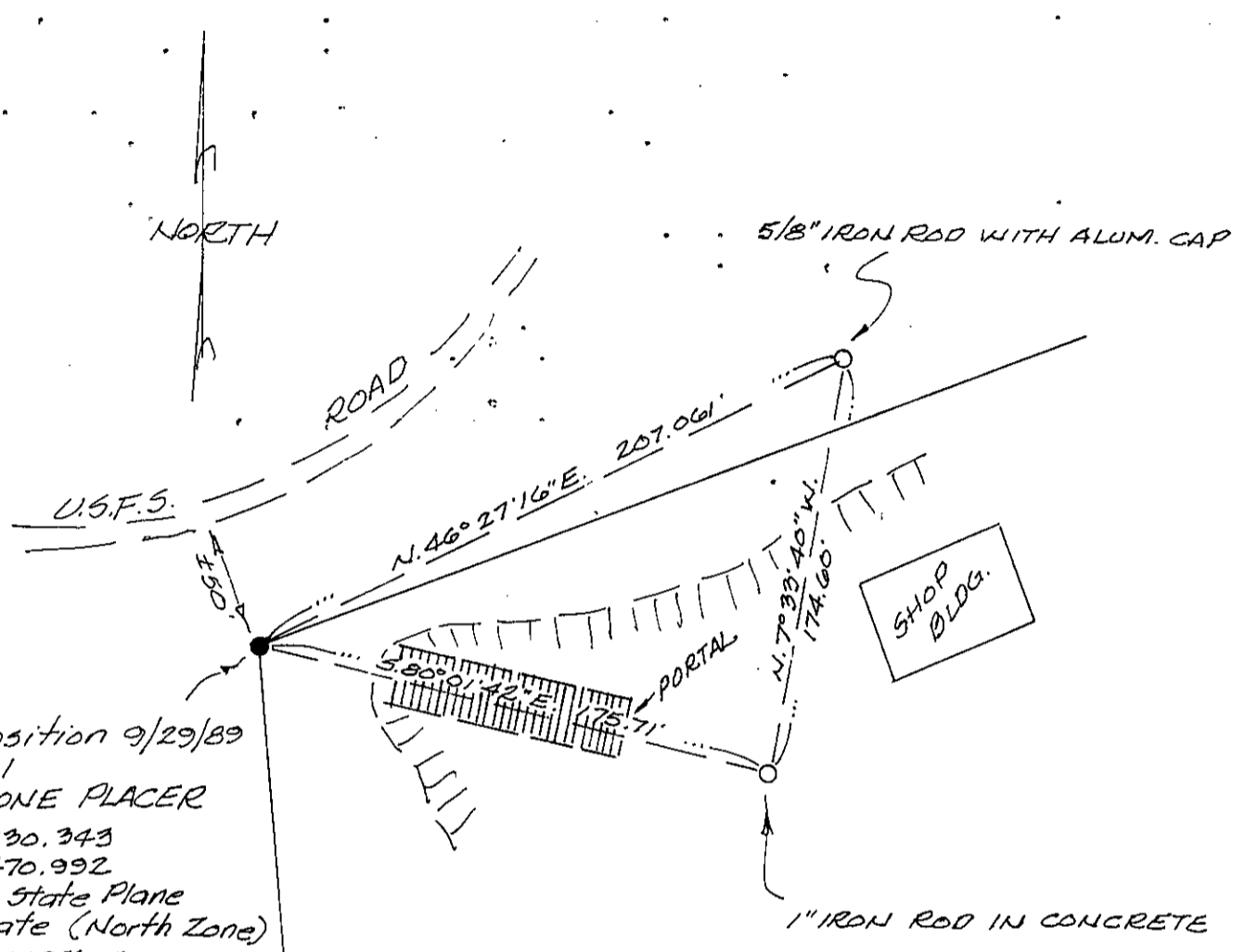
book No. _____

Janet B. Sugar by Bill Buckley
 County Official *Dep*

Sec.

Cross Index No. _____ T. _____ R. _____ P.M.M.

• - corner this sheet



field position 9/29/89
 Cor. No. 1
 JOHNSTONE PLACER
 N. 459,830.343
 E. 516,470.992
 Montana State Plane
 Coordinate (North Zone)
 $\theta = -4^{\circ}32'11''$

Note: Bearings & distances shown
 hereon are grid.