

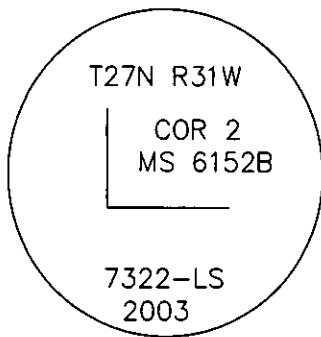
CERTIFIED CORNER RECORDATION

Corner 2 MS 6152B T 27 N. R. 31 W. P.M.M. LINCOLN County

I. Record: 1901 Mineral survey by Burton Adams: Set a post 5 ins. square, 4 ft. long 2 ft. deep, and raise a mound of stone along side.

II. Found: No evidence found

III. Perpetuation: At the calculated position from survey, set a aluminum pipe 2 1/2 ins. diam. 30 ins. long 24 ins. in the ground, with a 3 1/4 in. diam. aluminum cap marked as shown:



From which:

- A Cedar, 10 ins. diameter, bears S.14°W., 6.90 ft. dist., scribed 2-6152B BT.
- A Hemlock, 9 ins. diameter, bears N.59°W., 15.70 ft. dist., scribed 2-6152B BT.

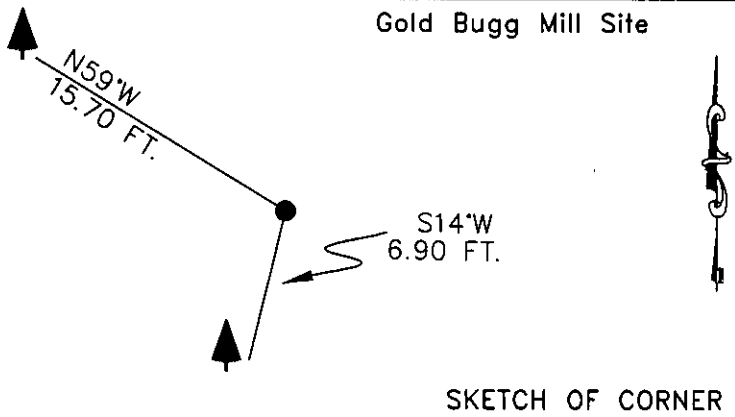
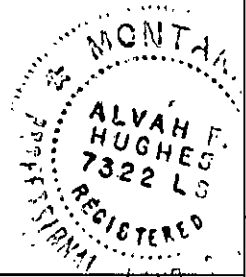
Painted scribed faces red and 6 in. wide bands around bearing trees and attached Bearing Tree and Land Survey Monument signs.

Raise a collar of stone 2 ft. diam. around set monument.

Magnetic declination: 20° East assumed

Equipment used: Hand compass and loggers tape

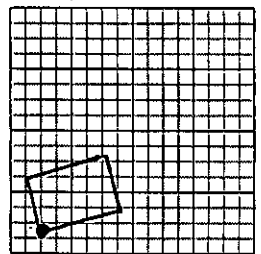
Kootenai Surveyors Inc., 314 California Av., Libby, MT. 59923 (406) 293-4354



CERTIFICATION
I, John Damon
certify the information shown herein is true and correct.
John Damon
Signature Ground Party Chief
I, Alvah F. Hughes
certify that this Corner Record correctly represents work performed by me or under my direction in compliance with the "Corner Recordation Act" (70-72-101, et seq., M.C.A.)
Alvah F. Hughes 7322 LS
Signature of Surveyor & Seal
Date: 12/9/2004 Reg. No. 7322-LS
Employer: Kootenai Surveyors Inc.

Office of Clerk and Recorder, County of Lincoln This "corner record" was f 181264 BOOK: CCR CC&R'S PAGE: 10716 Pages: 1 was noted on STATE OF MONTANA LINCOLN COUNTY book No. RECORDED: 12/14/2004 12:56 KOI: CC&R'S CORAL M. CUMMINGS CLERK AND RECORDER FEE: \$0.00 BY: Coral M. Cummings TO: FILED

UNSURVEYED SEC 36

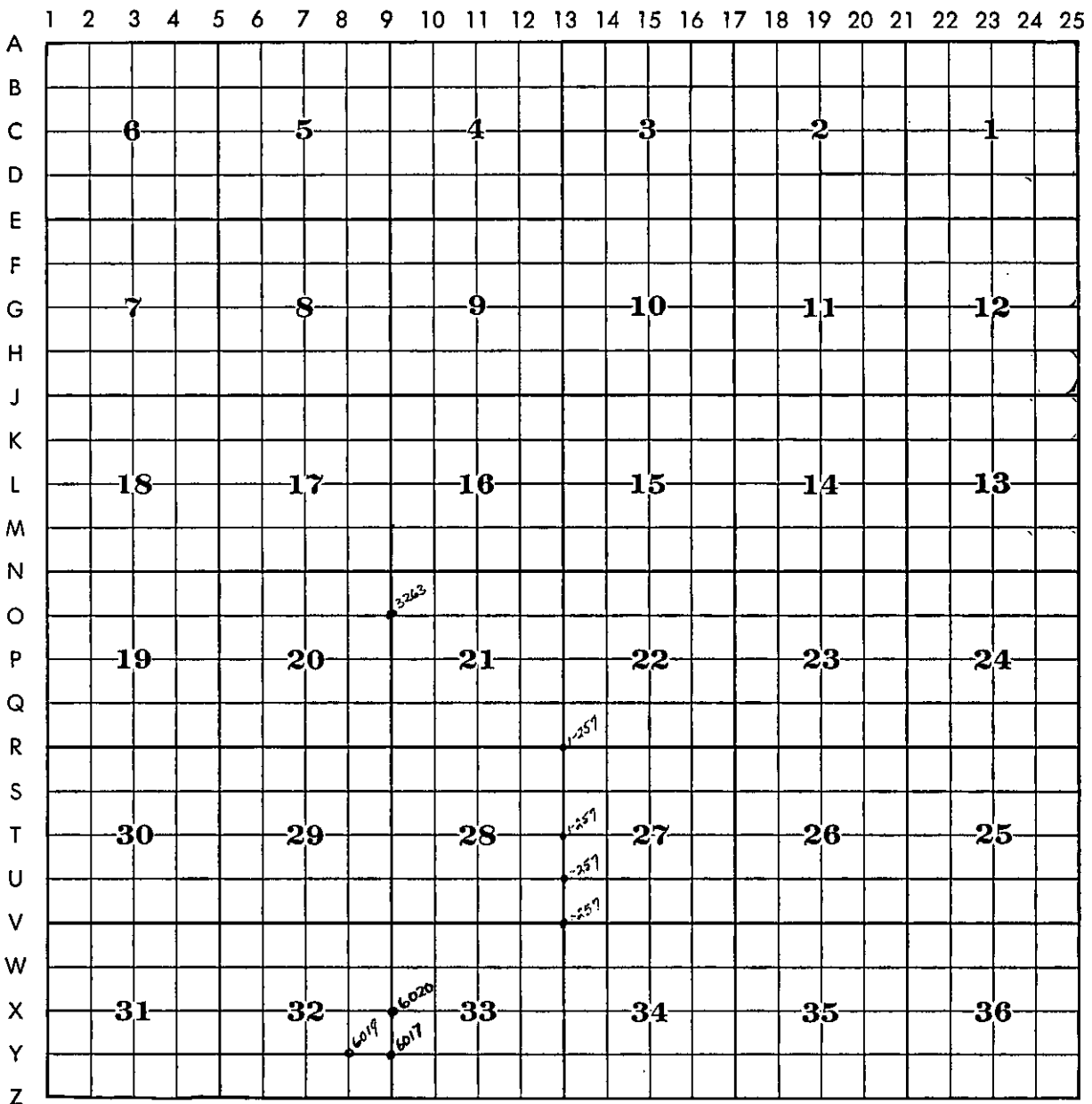


Cross Index No. _____ T. 27N. R. 31W. P.M., MT

• corner this sheet

CROSS INDEX PLAT

T. 27 R. 34 MER.



LEGEND

- Corners filed under this cross index plat.
- ⊕ Certificates filed in adjoining township as indicated by solid quadrant(s).

Each corner certificate is identified by an alphabetical-numerical coordinate number which is derived from the system shown on the township diagram. For example, the quarter-corner between Section 5 and 6 is identified as Corner C-5.

Corners such as meander corners or subdivision corners which are not located at intersecting lines on the above diagram will be identified by reference to the nearest applicable coordinate lines, thus: AB-1; M-1-2; VW-19-20.

Corners common to adjoining townships will be identified by coordinates of the townships in which the certificates are to be filed.

Within each township record, the certificates will be filed in alphabetical-numerical sequence.

T. 27 R. 34 MER.