

## CERTIFIED CORNER RECORDATION

Corner 4 MS 6152B T 27 N. R. 31 W. P.M.M. LINCOLN County

I. Record: 1901 Mineral survey by Burton Adams: Set a post 5 ins. square 4 ft. long 2ft. deep, from which:

A blazed fir, 22 ins. diameter, bears N72°10'W., 17.60 ft. dist., marked 4-6152B BT.

A blazed Cedar, 6 ins. diameter, bears S82°30'W., 19.20 ft. dist., marked 4-6152B BT.

A blazed Hemlock, 8 ins. diameter, bears N71°05'E., 19.40 ft. dist., marked 4-6152B BT.

II. Found: No evidence found

III. Perpetuation: At the calculated position from survey, the computed position was found to fall within the existing stream bed of the West Fisher Creek and impractical to set.

From which:

A Larch, 11 ins. diameter, bears N8°E., 19.60 ft. dist., scribed 4-6152B BT.

A Cedar, 8 ins. diameter, bears N85°W., 16.70 ft. dist., scribed 4-6152B BT.

A  $\frac{5}{8}$  in. diam. rebar 24 ins. long 22 ins. in the ground bears S72°27'W., 81.00 ft. dist., with a  $1\frac{1}{2}$  in. diam. P.V.C cap marked HUGHES 7322-LS.

A  $\frac{5}{8}$  in. diam. rebar 24 ins. long 22 ins. in the ground bears S17°33'E., 65.00 ft. dist., with a  $1\frac{1}{2}$  in. diam. P.V.C cap marked HUGHES 7322-LS.

Painted scribed faces red and 6 in. wide bands around BT's and attached Bearing Tree and Land Survey Monument signs.

Magnetic declination: 20° East assumed

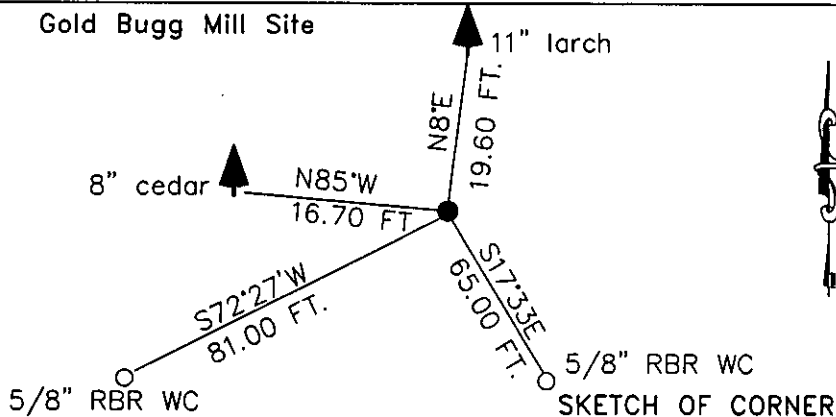
Equipment used: Hand compass and loggers tape

HUGHES

7322-LS

Kootenai Surveyors Inc., 314 California Av., Libby, MT. 59923 (406) 293-4354

Gold Bugg Mill Site



### CERTIFICATION

I, John Damon  
certify the information shown herein is true and correct.

John Damon  
Signature Ground Party Chief

I, Alvah F. Hughes  
certify that this Corner Record correctly represents work performed by me or under my direction in compliance with the "Corner Recordation Act" (70-22-101, et seq., M.C.A.)

Alvah F. Hughes, 7322-LS  
Signature of Surveyor & Seal

Date: 12/9/2004 Reg. No. 7322-LS

Employer: Kootenai Surveyors Inc.

Office of C'

181261 BOOK: CCR CC&R'S PAGE: 10713 Pages: 1

record" wa STATE OF MONTANA LINCOLN COUNTY

was noted RECORDED: 12/14/2004 12:42 KOI: CC&R'S

book No. CORAL M. CUMMINGS CLERK AND RECORDER

FEE: \$0.00

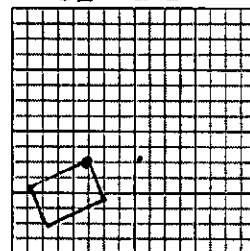
BY: Flannie Beanie

County Official

Cross Index No. \_\_\_\_\_ T. 27N. R. 31W. P.M., MT

Adopted July 1, 1981, Montana Board of Professional Engineers & Land Surveyors

UNSURVEYED  
SEC 36



• corner this sheet