

CERTIFIED LAND CORNER RECORDATION

DESCRIPTION OF CORNER EVIDENCE FOUND, AND ORIGINAL RECORD (IF KNOWN)

Mineral Survey No. 7431-Corner No. 10, Eureka No. 2 Placer

Found 32" White Pine scribed 9-7431 { Note: Original B.T. scribed incorrectly }
Original Record:

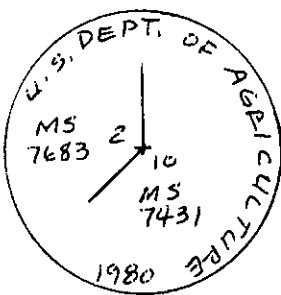
- Set a post 4" Sq., 4' Long, 2' Deep,
From Which:
A Blazed Pine, 16" dia., Scribed 10-7431 B.T. Bears S38°E, 6.2 FT.
A Blazed Pine, 12" dia., Scribed 10-7431 B.T. Bears N10°E, 12.0 FT.

DESCRIPTION OF MONUMENT AND ACCESSORIES ESTABLISHED TO PERPETUATE THE ORIGINAL LOCATION OF THIS CORNER:

Set an aluminum pipe 2 1/2" X 30", 26" in ground, with cap marked as shown for exact corner position,
From Which:

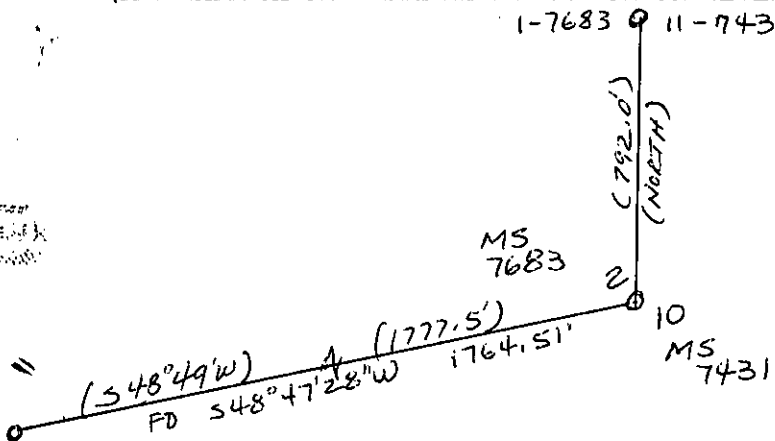
Date of work: 12-1980

Original B.T., a 32" dia., White Pine {See Above}



No New Accessories available.

SKETCH, WITH COURSE AND DISTANCE TO ADJACENT CORNERS IF DETERMINED IN THIS SURVEY. (MAY SKETCH OR PASTE REPRODUCTION ON REVERSE SIDE.)



() = RECORD

Surveyor's Seal



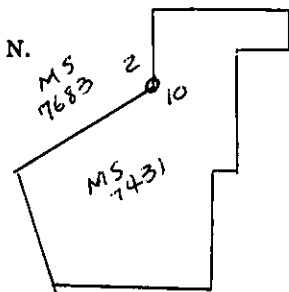
I, Kenneth Kern
certify that the information shown herein is true and correct.

Kenneth R. Kern
Signature of Ground Party Chief

I, Melvin D. Lauteren
certify that I have carefully performed or reviewed the work done on the diagrammed corner as reported on this recordation form and approve the same.

Melvin D. Lauteren
Signature of Surveyor

DIAGRAM OF CORNER:



= Corner recorded on the sheet

NOTE: IN SECTIONS 11 & 12 - 27-31

4232-5
Registration Number

Office of Clerk and Recorder, County of Lincoln
This "corner record" was filed for record on the 6th day of February, 1981, was noted on the cross-index plat and is assigned page No. 1002, in book No. 1
Eleanor L. Vaughn County Official
Deputy
Cross Index No. G-20 T. 27N R. 31W Mer.