

CERTIFIED LAND CORNER RECORDATION

DESCRIPTION OF CORNER EVIDENCE FOUND, AND ORIGINAL RECORD (IF KNOWN)

Mineral Survey No. 6399-Corner No. 3, Starveout Placer

Found 1 7/8" Cedar scribed 3-6399 B.T.

Original Record:

Set a post 6" square, 4' Long, 2' Deep, Marked 3-6399 For Cor. No. 3  
A Blazed Cedar, 12" dia., marked 3-6399 B.T. Bears N41°30'W, 3.0 FT.  
A Blazed Pine Tree 12" dia., marked 3-6399 B.T. Bears S35°W, 12.0 FT.

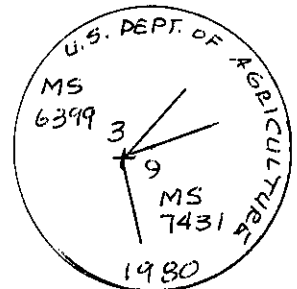
DESCRIPTION OF MONUMENT AND ACCESSORIES ESTABLISHED TO PERPETUATE THE ORIGINAL LOCATION OF THIS CORNER:

Date of work: 12-1980

Set an aluminum pipe 2 1/2" X 30", 20" in ground, with mound of stone, with cap marked as shown for exact corner position.

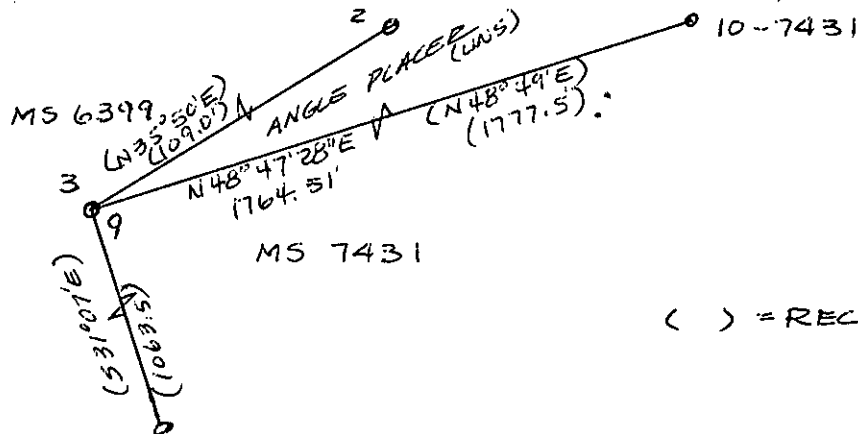
From Which:

Original B.T., a 1 7/8" dia., Cedar {See Above}



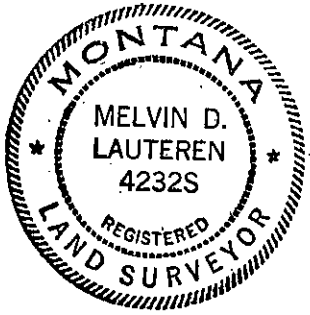
No New Accessories available.

SKETCH, WITH COURSE AND DISTANCE TO ADJACENT CORNERS IF DETERMINED IN THIS SURVEY. (MAY SKETCH OR PASTE REPRODUCTION ON REVERSE SIDE.)



( ) = RECORD

Surveyor's Seal



I, Kenneth Kern, certify that the information shown herein is true and correct.

Signature of Kenneth R. Kern

Signature of Ground Party Chief

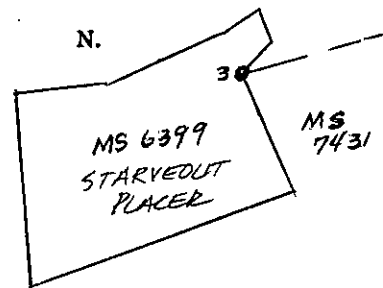
I, Melvin D. Lauteren, certify that I have carefully performed or reviewed the work done on the diagrammed corner as reported on this recordation form and approve the same.

Signature of Melvin D. Lauteren

Signature of Surveyor

4232-S Registration Number

DIAGRAM OF CORNER:



o = Corner recorded on the sheet

NOTE: IN SECTION 11-27-31

Office of Clerk and Recorder, County of Lincoln

This "corner record" was filed for record on the 6th day of February 1981, was noted on the cross-index plat and is assigned page No. 1001, in book No. 1

Signature of Thomas L. Vaughn, County Official

Cross Index No. G-20 T. 27N R. 31W Mer.