

CERTIFIED CORNER RECORDATION

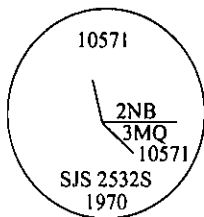
Corner MS 10571- COR 3 Sec. 19 T. 27N R. 30W P.M., MT Lincoln County
MOUNTAIN
QUEEN LODGE

I. 1926 Mineral Survey original record by Charles H. Goodsell: A fir post, 5 ft. long, 4 ins. square, set 2 ft. in the ground, with a mound of earth, scribed M. Q. 3-10571, and two bearing trees.

1970 Corner recordation by Stanley J. Shousen: Found the rotten remains of a squared post, from which:

A larch, 27 ins. diam., bears N2° 57'E, 76.1 ft. dist., alive and with all scribing visible. (record)
A larch, 25 ins. diam., bears N61° 10'E, 44.1 ft. dist., alive with all scribing overgrown. (record)

For cor. No. 3, "Mountain Queen Lode" MS No. 10571, Identical with Cor. No. 2, "Northern Bell Lode" MS No. 10571, I set a 2 in. galvanized iron pipe 24 inches in the ground, with brass cap marked as shown. I set corner from orig. bearings and distances from found bearing trees.



II. Found a 2 in. diam. iron pipe, 10 in. out of ground, firmly set with a brass cap mkd. as shown above, from which:

A larch, 30 ins. diam., bears N3°E, 76.1 ft. dist., with a healed face.
The BT at N61°E is missing due to a logging road cut.

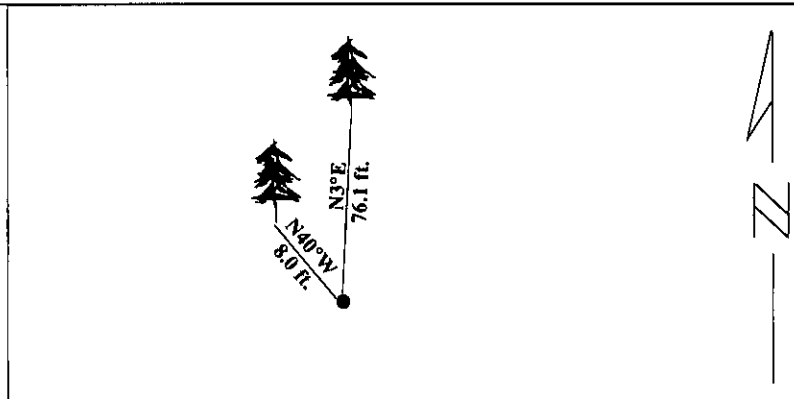
III. Established one new bearing tree:

A larch, 12 ins. diam., bears N40°W, 8.6 ft. dist., mkd. "2 NB 10571 BT".

Painted red bands around the bearing trees and attached Land Survey Monument and Bearing Tree signs.

Set a 6 ft. steel guard post with LSM decal affixed, bearing S19°E, 4 ft. dist. from monument.

Magnetic Declination: 20° East



SKETCH OF CORNER

CERTIFICATION

I, Thomas M. Hommel
certify the information shown herein is true and correct.

Thomas M. Hommel
Signature Ground Party Chief

I, Alvah F. Hughes
certify that this Corner Record correctly represents work performed by me or under my direction in compliance with the "Corner Recordation Act", (70-22401, as amended, M.C.A.)

Alvah F. Hughes
Signature of Surveyor & Seal

Date: 1/11/96

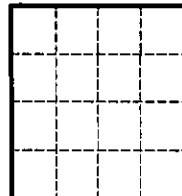
Reg. No.: 7322LS

Employer: U.S. FOREST SERVICE

Office of Clerk and Recorder, County of LINCOLN. This "corner record" was filed for record on FEB 20 1997 was noted on the cross-index plat and is assigned page No. 9246 in book No. CORAL M. CUMMINGS By DLB

County Official

Sec. 19



• - corner this sheet

Cross Index No.

T. 27N R. 30W PMM