

CERTIFIED CORNER RECORDATION

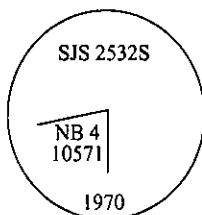
Corner MS 10571- COR 4 Sec. 19 T. 27N R. 30W P.M., MT Lincoln County
NORTHERN
BELL LODGE

I. 1926 Mineral Survey original record by Charles H. Goodsell: A fir post, 5 ft. long, 4 ins. square, set 2 ft. in the ground, with a mound of earth, scribed N. B. 4-10571, and two bearing trees. NE Loc. Cor. N82° 55'E, 24 feet.

1970 Corner recordation by Stanley J. Shousen: Found the orig. wooden post lying on the ground, plainly marked 10571, from which:

A fir, 15 ins. diam., bears N19° 17'E, 10.3 ft. dist., alive and with all scribing visible. (record)
A larch, 14 ins. diam., bears S51° 56'E, 18.1 ft. dist., alive with all scribing visible. (record)

For cor. No. 4 "Northern Bell Lode" MS No. 10571, I set a 2 in. galvanized iron pipe 24 inches in the ground, with brass cap marked as shown. I set corner from two distances and one bearing.



II. Found a 2 in. diam. iron pipe, 8 in. out of ground, firmly set with a brass cap mkd. as shown above, from which:

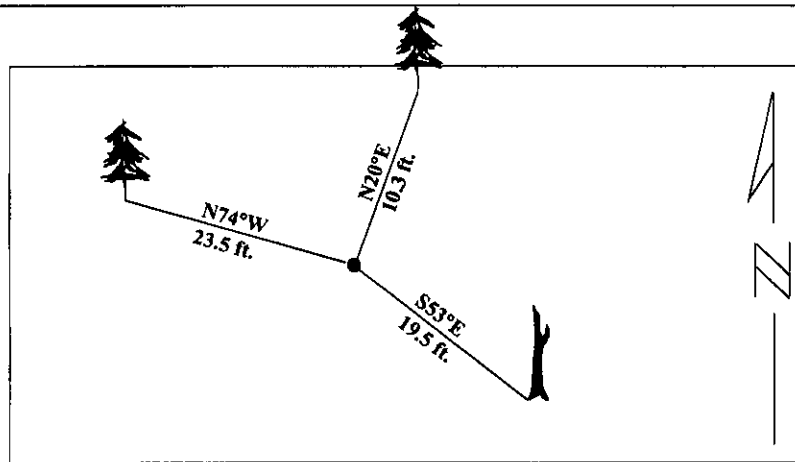
A fir, 19 ins. diam., bears N20°E, 10.3 ft. dist., with visible scribing.
A larch snag, 12 ins. diam., bears S53°E, 19.5 ft. dist., with "4 105" visible.

III. Established one new bearing tree:

A fir, 19 ins. diam., bears N74°W, 23.5 ft. dist., mkd. "4 NB 10571 BT".

Painted red bands around the bearing trees and attached Land Survey Monument and Bearing Tree signs.

Magnetic Declination: 20° East

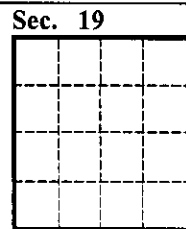


SKETCH OF CORNER

CERTIFICATION	
I. Thomas M. Hommel	certify the information shown herein is true and correct.
<i>[Signature]</i>	Signature Ground Party Chief.
I, Alvah F. Hughes	
certify that this Corner Record correctly represents work performed by me or under my direction in compliance with the "Corner Recordation Act" (70-22-101, et seq., M.C.A.)	
<i>[Signature]</i>	Signature of Surveyor & Seal
Date: 1/11/96	
Reg. No.: 7322LS	
Employer: U.S. FOREST SERVICE	

Office of Clerk and Recorder, County of LINCOLN. This "corner record" was filed for record on FEB 20, 1997 was noted on the cross-index plat and is assigned page No. 9245 in book No. CORAL M. CUMMINGS By DLB

County Official



• - corner this sheet

Cross Index No.

T. 27N R. 30W PMM