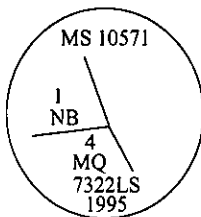


CERTIFIED CORNER RECORDATION

Corner MS 10571- COR 4 Sec. 19 T. 27N R. 30W P.M., MT Lincoln County  
MOUNTAIN  
QUEEN LODGE

- I. 1926 Mineral Survey original record by Charles H. Goodsell: A fir post, 5 ft. long, 4 ins. square, set 2 ft. in the ground, with a mound of earth, scribed M. Q. 4-10571. NE Loc. Cor. N82° 55'E, 35 feet.
- II. No evidence found of orig. wooden post or of the NE Loc. Corner.
- III. At the position determined by survey, set a 2 1/2 in. diam., 30 in. long. alum. pipe, 22 ins. in the ground, with a 3 1/4 in. alum. cap mkd. as shown:



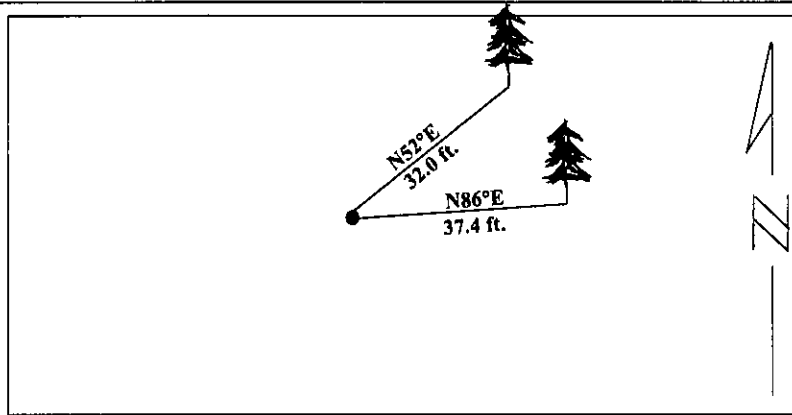
from which:

- A larch, 8 ins. diam., bears N52°E, 32.0 ft. dist., mkd. "1 NB 10571 BT".
- A larch, 9 ins. diam., bears N86°E, 37.4 ft. dist., mkd. "4 MQ 10571 BT".

Painted red bands around the bearing trees and attached Land Survey Monument and Bearing Tree signs.

Set a 6 ft. galvanized steel guard post with LSM and PB decals, on line, bearing S19°E, approx. 4 ft. from monument.

Magnetic Declination: 20° East



SKETCH OF CORNER

CERTIFICATION

I, Thomas M. Hommel  
certify the information shown herein is true and correct.

Thomas M. Hommel  
Signature Ground Party Chief

I, Alvah F. Hughes  
certify that this Corner Record correctly represents work performed by me or under my direction in compliance with the "Corner Recordation Act" (70-22-101, et seq., M.C.A.)

Alvah F. Hughes  
Signature of Surveyor & Seal

Date: 1/11/96

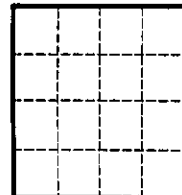
Reg. No.: 7322LS

Employer: U.S. FOREST SERVICE

Office of Clerk and Recorder, County of LINCOLN. This "corner record" was filed for record on FEB 20, 1997 was noted on the cross-index plat and is assigned page No 9244, in book No. CORAL M. CUMMINGS By PLB

County Official

Sec. 19



• - corner this sheet

Cross Index No.

T. 27N R. 30W PMM