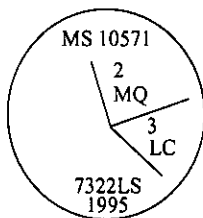


CERTIFIED CORNER RECORDATION

Corner MS 10571- COR 3 Sec. 19 T. 27N R. 30W P.M., MT Lincoln County
LAST CHANCE
LODE

- I. 1926 Mineral Survey original record by Charles H. Goodsell: A fir post, 6 ft. long, 7 ins. square, set 2 ft. in the ground, with a mound of earth, scribed L C 3-10571. NW Loc. Cor. S82° 55'W, 44 feet.
- II. No evidence found of orig. wooden post or of the NW Loc. Corner.
- III. At the position determined by survey, set a 2 1/2 in. diam., 30 in. long. alum. pipe, 28 ins. in the ground, with a 3 1/4 in. alum. cap mkd. as shown:



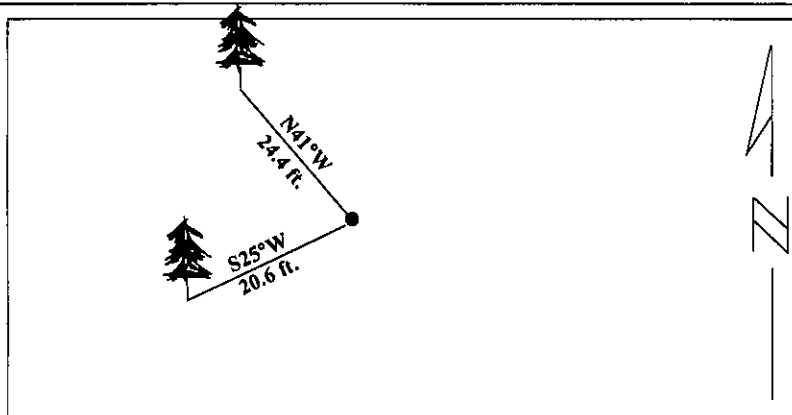
from which:

- A larch, 4 ins. diam., bears S25°W, 20.6 ft. dist., mkd. "X BT".
A pine, 8 ins. diam., bears N41°W, 24.4 ft. dist., mkd. "2 MQ 10571 BT".

Painted red bands around the bearing trees and attached Land Survey Monument and Bearing Tree signs.

Set a 6 ft. galvanized steel guard post with LSM and PB decals, on line, bearing S44°W, approx. 3 1/2 ft. from monument.

Magnetic Declination: 20° East



SKETCH OF CORNER

CERTIFICATION

I, Thomas M. Hommel
certify the information shown herein is true and correct.

Thomas M. Hommel
Signature Ground Party Chief

I, Alvah F. Hughes
certify that this Corner Record correctly represents work performed by me or under my direction in compliance with the "Corner Recordation Act", (70-22-101, et seq., M.C.A.)

Alvah F. Hughes
Signature of Surveyor & Seal

Date: 1/12/96

Reg. No.: 7322LS

Employer: U.S. FOREST SERVICE

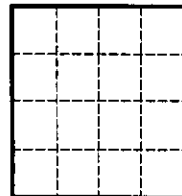
7322LS
REGISTERED
PROFESSIONAL
LAND SURVEYOR
MONTANA

Office of Clerk and Recorder, County of LINCOLN. This "corner record" was filed for record on FEB 20, 1997 was noted on the cross-index plat and is assigned page No. 9243 in book No. _____

CORAL M. CUMMINGS By DLB

County Official

Sec. 19



• - corner this sheet

Cross Index No.

T. 27N R. 30W PMM