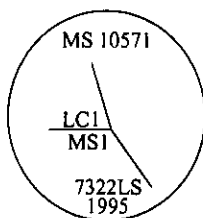


CERTIFIED CORNER RECORDATION

Corner MS 10571- COR 1 Sec. 30 T. 27N R. 30W P.M., MT Lincoln County  
MORNING STAR  
LODE

- I. 1926 Mineral Survey original record by Charles H. Goodsell: Identical with the NE Loc. Cor., a fir post, 5 ft. long, 6 ins. square, set 2 ft. in the ground, with a mound of earth, scribed M S 1-10571.
- II. No evidence found of orig. wooden post.
- III. At the position determined by survey, set a 2 1/2 in. diam., 30 in. long. alum. pipe, 26 ins. in the ground, with a 3 1/4 in. alum. cap mkd. as shown:



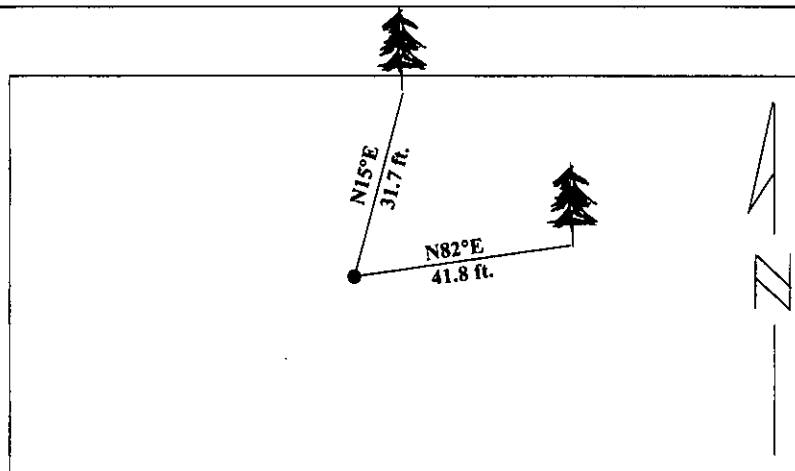
from which:

- A larch, 9 ins. diam., bears N15°E, 31.7 ft. dist., mkd. "1 LC 10571 BT".  
A fir, 8 ins. diam., bears N82°E, 41.8 ft. dist., mkd. "1 MS 10571 BT".

Painted red bands around the bearing trees and attached Land Survey Monument and Bearing Tree signs.

Set a 6 ft. galvanized steel guard post with LSM and PB decals, on line, bearing S50°E, approx. 4 ft. from monument.

Magnetic Declination: 20° East



SKETCH OF CORNER

CERTIFICATION

I. Thomas M. Hommel  
certify the information shown herein is true and correct.

Thomas M. Hommel  
Signature Ground Party Chief

I. Alvah F. Hughes  
certify that this Corner Record correctly represents work performed by me or under my direction in compliance with the "Corner Recordation Act" (70-22401, et seq., M.G.A.)

Alvah F. Hughes  
Signature of Surveyor & Seal

Date: 1/12/96

Reg. No.: 7322LS

Employer: U.S. FOREST SERVICE

HUGHES  
7322 LS  
REGISTERED  
LAND SURVEYOR

Office of Clerk and Recorder, County of LINCOLN. This "corner record" was filed for record on FEB 20, 1997 was noted on the cross-index plat and is assigned page No 9241 in book No. CORAL M. CUMMINGS By DLB  
County Official

