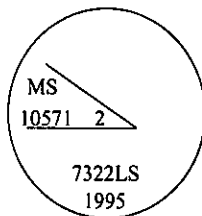


CERTIFIED CORNER RECORDATION

Corner MS 10571- COR 2 Sec. 29 T. 27N R. 30W P.M., MT Lincoln County
MORNING STAR
LODE

- I. 1926 Mineral Survey original record by Charles H. Goodsell: A fir post, 5 ft. long, 4 ins. square, set 2 ft. in the ground, with a mound of earth, scribed M S 2-10571. A cross and a BT scribed on a larch, 30 ins. diam., bears N87° 45'W, 100.4 ft. distant. The SE Loc. Cor. bears S56°03'E, 395 ft. distant.
- II. Found the rotted remains of a wooden post set vertically in a mound of earth from which:
- A larch snag, 26 ins. diam., bears N88°W, 100.4 ft. dist., with "2 10571" visible.
- III. At the position of found rotted wooden post, set a 2 1/2 in. diam., 30 in. long alum. pipe, 25 ins. in the ground, with a 3 1/4 in. alum. cap mkd. as shown:

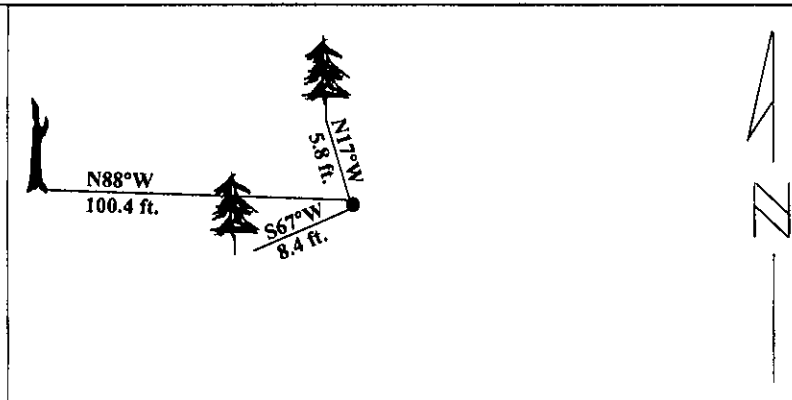


Established two new bearing trees:

- A larch, 13 ins. diam., bears S67°W, 8.4 ft. dist., mkd. "2 MS 10571 BT".
A larch, 10 ins. diam., bears N17°W, 5.8 ft. dist., mkd. "2 MS 10571 BT".

Painted red bands around the bearing trees and attached Land Survey Monument and Bearing Tree signs.

Magnetic Declination: 20° East



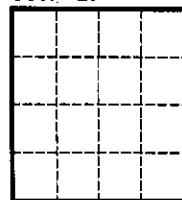
SKETCH OF CORNER

CERTIFICATION	
I, <u>Thomas M. Hommel</u>	
certify the information shown herein is true and correct.	
<u>Thomas M. Hommel</u>	
Signature Ground Party Chief	
I, <u>Alvah F. Hughes</u>	
certify that this Corner Record correctly represents work performed by me or under my direction in compliance with the "Corner Recordation Act" (70-22-10, et seq., M.C.A.)	
<u>Alvah F. Hughes</u>	
Signature of Supervisor & Seal	
Date:	<u>1/11/96</u>
Reg. No.:	<u>7322LS</u>
Employer:	<u>U.S. FOREST SERVICE</u>

Office of Clerk and Recorder, County of LINCOLN. This "corner record" was filed for record on FEB 20, 1997 was noted on the cross-index plat and is assigned page No. 9239, in book No. CORAL M. CUMMINGS By PLB

County Official

Sec. 29



• - corner this sheet

Cross Index No.

T. 27N R. 30W PMM