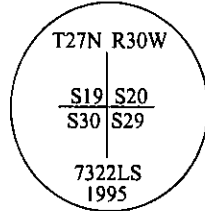


**CERTIFIED CORNER RECORDATION**

**Corner**    **SE Sec. Corner**    **Sec. 19**    **T. 27N**    **R. 30W**    **P.M, MT**    **Lincoln**    **County**

- I. 1900 G.L.O. original record by Burton S. Adams: Set a granite stone, 18x14x4 ins., 12 ins. in the ground, for cor. of secs. 19, 20, 29 and 30, mkd. with 2 notches on S. and 5 notches on E. edge, from which:
- A fir, 8 ins. diam., bears N67° 41'E, 41 lks. dist., mkd "T27N R30W S20 BT".
  - A fir, 12 ins. diam., bears S48°E, 54 lks. dist., mkd "T27N R30W S29 BT".
  - A larch, 16 ins. diam., bears S84° 15'W, 150 lks. dist., mkd "T27N R30W S30 BT".
  - A fir, 8 ins. diam., bears N63°W, 80 lks. dist., mkd "T27N R30W S19 BT".
- II. Found a stone, 4x10 ins., 4 ins. above the ground, firmly set, with an "X" on top and 2 notches on S. face, with the E. edge fractured off, from which:
- No evidence exists of BT at N67° 41'E, 41 lks. distant.
  - A rotten fir stump, 12 ins. diam., bears S48°E, 35.6 ft. (54 lks.) distant.
  - A fallen larch snag, 18 ins. diam., bears S84°W, 99 ft. (150 lks.) dist., mkd. with visible scribing.
  - A tree well, bears N63°W, 52.8 ft. (80 lks.) distant.
- III. At the position of found stone, set a 2 1/2 in. diam., 30 in. long alum. pipe, 22 ins. in the ground, with a 3 1/4 in. alum. cap mkd. as shown below. Buried the orig. stone alongside the pipe and raised a collar of stone, 3 feet in diam. around monument.

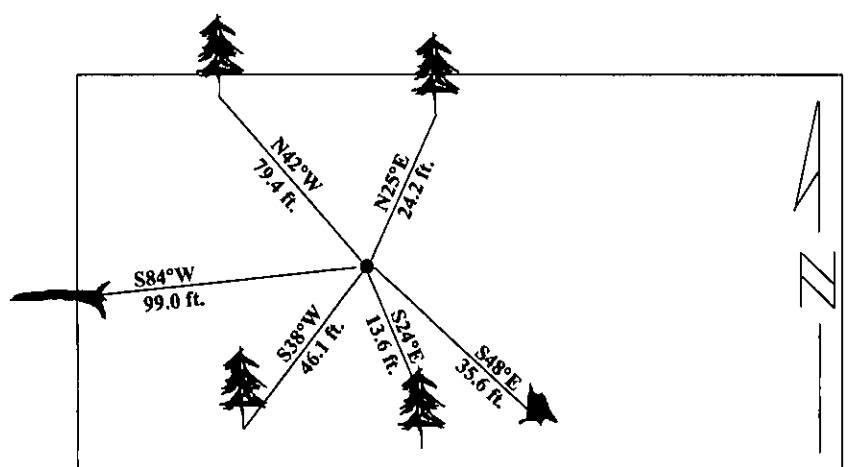


Established four new bearing trees:

- A larch, 11 ins. diam., bears N25°E, 24.2 ft. dist., mkd. "T27N R30W S20 BT".
- A larch, 18 ins. diam., bears S24°E, 13.6 ft. dist., mkd. "T27N R30W S29 BT".
- A larch, 13 ins. diam., bears S38°W, 46.1 ft. dist., mkd. "T27N R30W S30 BT".
- A larch, 15 ins. diam., bears N42°W, 79.4 ft. dist., mkd. "T27N R30W S19 BT".

Painted red bands around the bearing trees and attached Land Survey Monument and Bearing Tree signs.

Magnetic Declination: 20° East



**SKETCH OF CORNER**

**CERTIFICATION**

I, **Mark Federman**  
certify the information shown herein is true and correct.  
*Mark Federman*  
 Signature Ground Party Chief

I, **Alvah F. Hughes**  
certify that this Corner Record correctly represents work performed by me or under my direction in compliance with the Corner Recordation Act (70-22-101 et seq., M.C.A.)  
*Alvah F. Hughes*  
 Signature of Surveyor & Seal

Date: **1/12/96**

Reg. No.: **7322LS**

Employer: **U.S. FOREST SERVICE**

Office of Clerk and Recorder, County of LINCOLN. This "corner record" was filed for record on FEB 20, 1997 was noted on the cross-index plat and is assigned page No. 9238, in book No. \_\_\_\_\_

**CORAL M. CUMMINGS** *DLB*  
 County Official

